



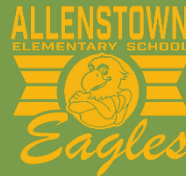
School Board Presentation

**ALLENSTOWN
SCHOOL DISTRICT**

Feasibility Study

Allenstown, NH

April 08, 2019



CONCEPT OPTIONS initial layouts

- Facility and Space Needs Recap
- AES Concept Options
 - Baseline (Pre-k – 4)
 - Option 1 (Pre-k – 5)
 - Option 2 (Pre-k – 5)
- ARD Replacement Options (Order of Magnitude)
- Next Steps

AGENDA

FINDINGS & RECOMMENDATIONS RECAP



AES DESIGN OPTIONS

School Board Presentation



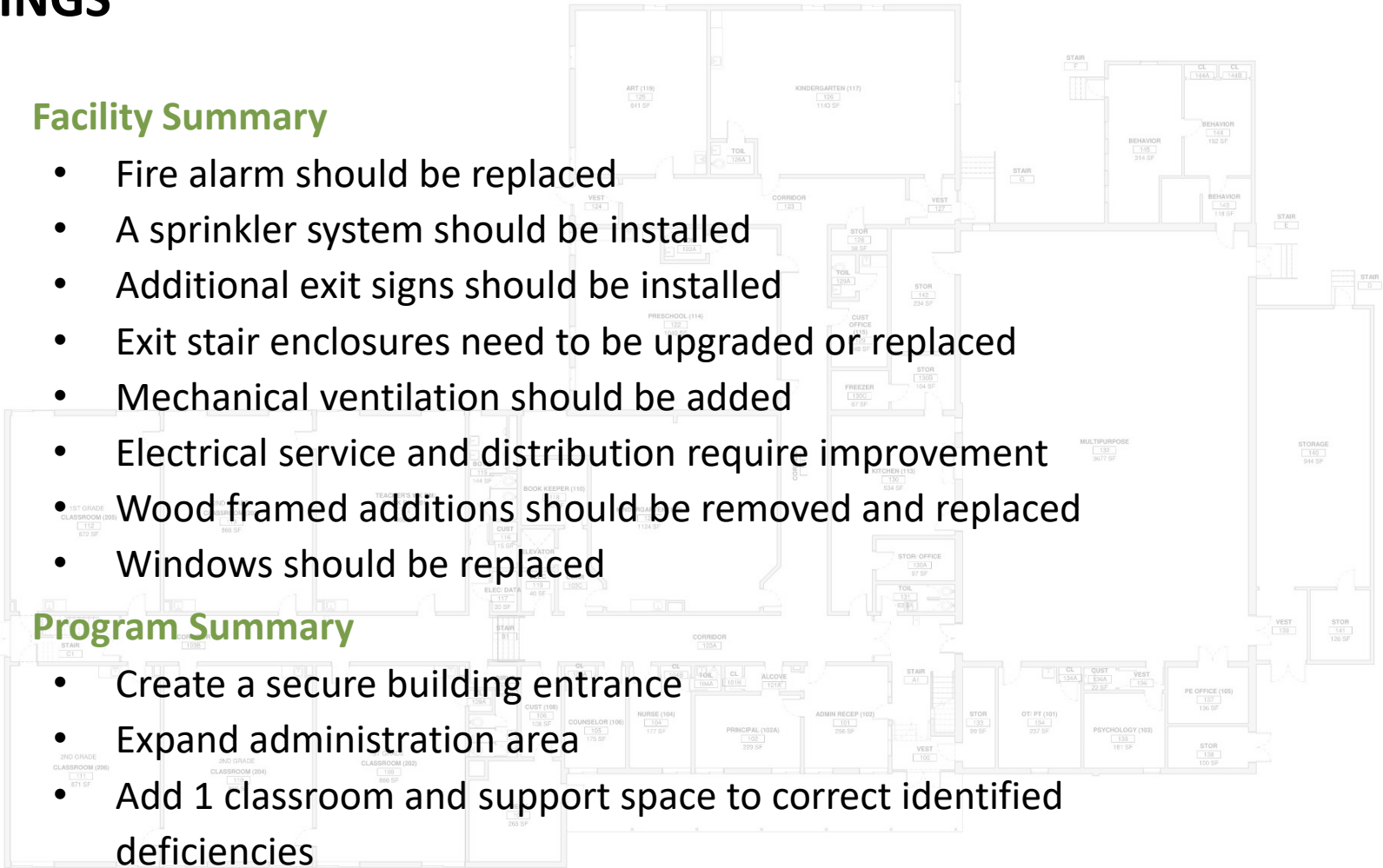
FINDINGS

1. Facility Summary

- Fire alarm should be replaced
- A sprinkler system should be installed
- Additional exit signs should be installed
- Exit stair enclosures need to be upgraded or replaced
- Mechanical ventilation should be added
- Electrical service and distribution require improvement
- Wood framed additions should be removed and replaced
- Windows should be replaced

2. Program Summary

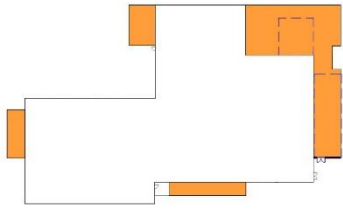
- Create a secure building entrance
- Expand administration area
- Add 1 classroom and support space to correct identified deficiencies
- Increase area for allied arts rooms and kitchen: relocate spaces



AES DESIGN OPTIONS

School Board Presentation



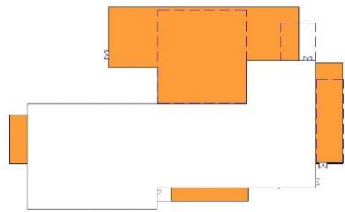


BASE

BASE OPTION: PRE K - 4

	EXISTING SF	DEMOLITION SF	RENOVATION SF	NEW CONSTRUCTION SF
FIRST FLOOR	23,540	2,010	3,640	5,800
SECOND FLOOR	11,900		2,430	485
TOTAL	35,440	2,010	6,070	6,285

PROJECT TOTAL BUILDING SF: 39,715

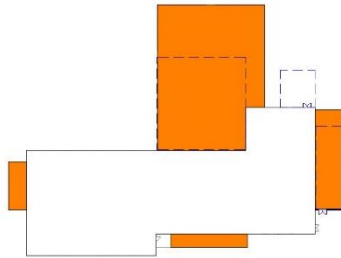


OPTION 1

OPTION 1: PRE K - 5

	EXISTING SF	DEMOLITION SF	RENOVATION SF	NEW CONSTRUCTION SF
FIRST FLOOR	23,540	6,660	4,520	10,640
SECOND FLOOR	11,900		1,990	8,515
TOTAL	35,440	6,660	6,510	19,155

PROJECT TOTAL BUILDING SF: 47,935



OPTION 2

OPTION 2: PRE K - 5

	EXISTING SF	DEMOLITION SF	RENOVATION SF	NEW CONSTRUCTION SF
FIRST FLOOR	23,540	6,660	3,920	10,890
SECOND FLOOR	11,900		2,810	8,890
TOTAL	35,440	6,660	6,730	19,780

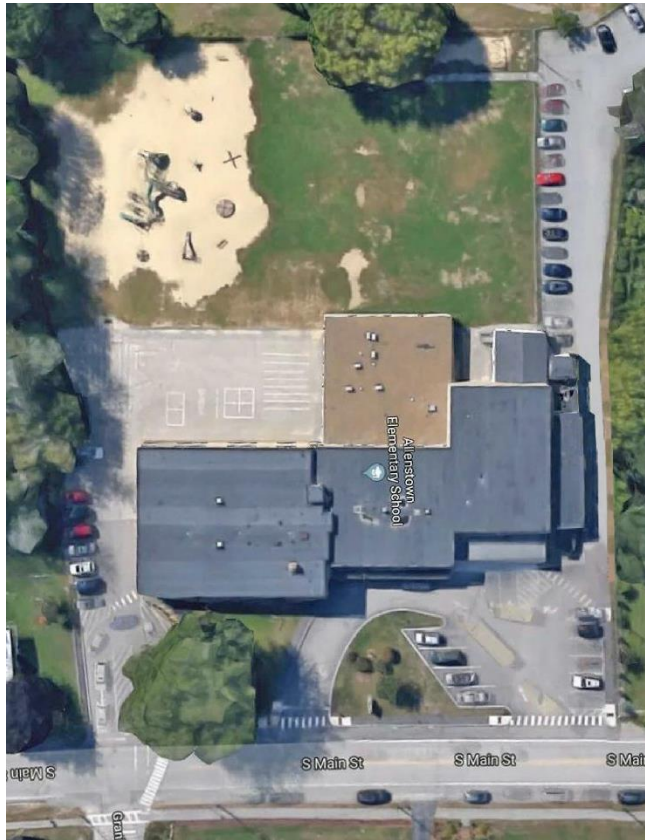
PROJECT TOTAL BUILDING SF: 48,560

AES DESIGN OPTIONS

School Board Presentation



BASELINE OPTION FOR PRE-K – 4TH GRADE SITE PLAN

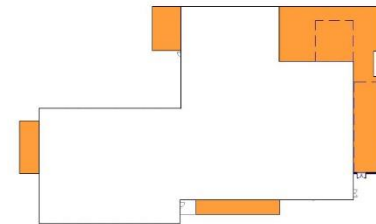


AES DESIGN OPTIONS

School Board Presentation



BASELINE OPTION FOR PRE-K – 4TH GRADE GROUND FLOOR



KEY PLAN

- LEGEND**
- CIRCULATION
 - EXISTING CLASSROOM
 - NEW CLASSROOM
 - SPECIAL SERVICES
 - SPECIALIZED CLASSROOM
 - CORE AREAS
 - EDUCATIONAL SUPPORT AREAS
 - FACILITIES SUPPORT AREAS
 - STORAGE AREAS



AES DESIGN OPTIONS

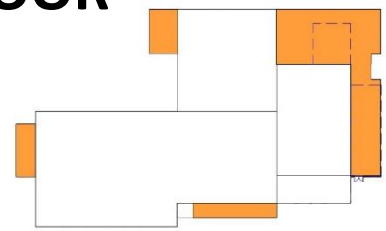
School Board Presentation



BASELINE OPTION FOR PRE-K – 4TH GRADE UPPER FLOOR

LEGEND

- CIRCULATION
- EXISTING CLASSROOM
- NEW CLASSROOM
- SPECIAL SERVICES
- SPECIALIZED CLASSROOM
- CORE AREAS
- EDUCATIONAL SUPPORT AREAS
- FACILITIES SUPPORT AREAS
- STORAGE AREAS



KEY PLAN

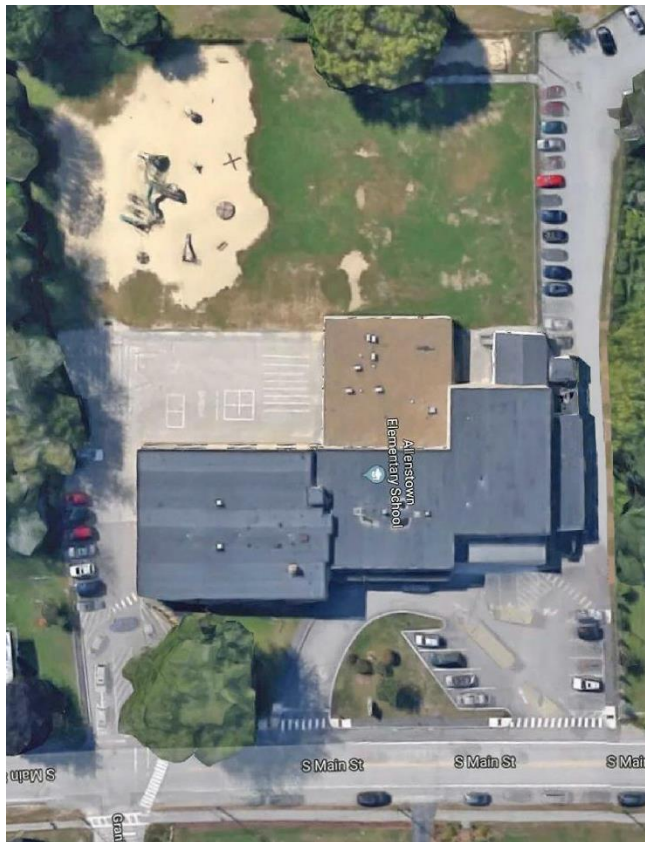


AES DESIGN OPTIONS

School Board Presentation



OPTION 1 FOR PRE-K – 5TH GRADE SITE PLAN



AES DESIGN OPTIONS

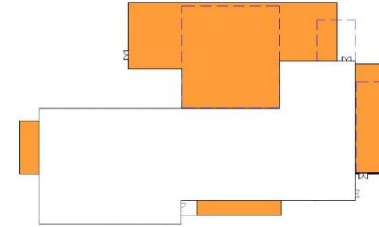
School Board Presentation



OPTION 1 FOR PRE-K – 5TH GRADE GROUND FLOOR

LEGEND

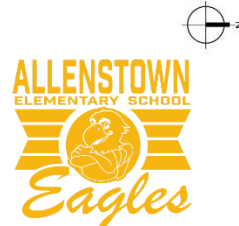
- CIRCULATION
- EXISTING CLASSROOM
- NEW CLASSROOM
- SPECIAL SERVICES
- SPECIALIZED CLASSROOM
- CORE AREAS
- EDUCATIONAL SUPPORT AREAS
- FACILITIES SUPPORT AREAS
- STORAGE AREAS



KEY PLAN

AES DESIGN OPTIONS

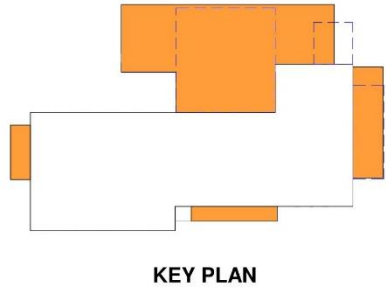
School Board Presentation



OPTION 1 FOR PRE-K – 5TH GRADE UPPER FLOOR

LEGEND

- CIRCULATION
- EXISTING CLASSROOM
- NEW CLASSROOM
- SPECIAL SERVICES
- SPECIALIZED CLASSROOM
- CORE AREAS
- EDUCATIONAL SUPPORT AREAS
- FACILITIES SUPPORT AREAS
- STORAGE AREAS

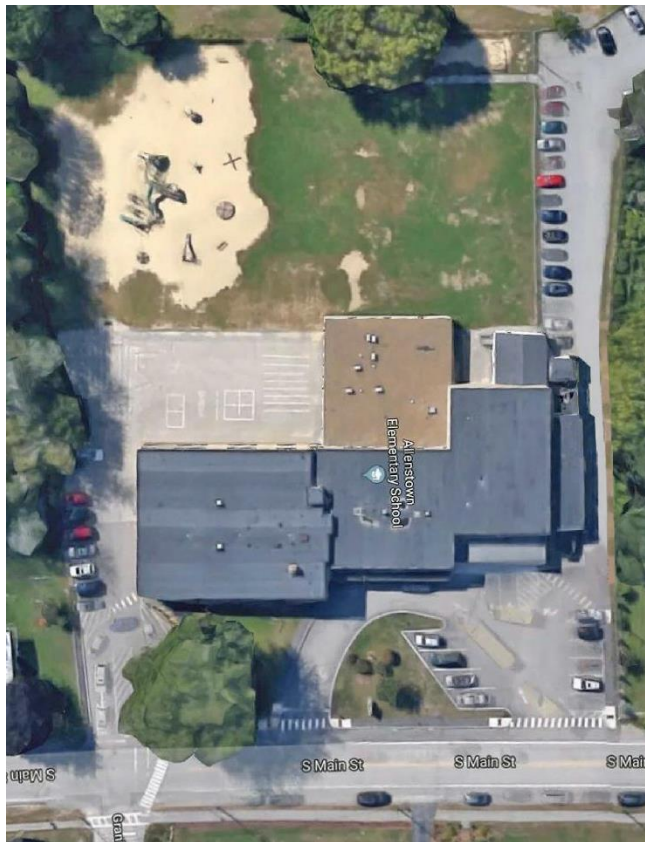


AES DESIGN OPTIONS

School Board Presentation



OPTION 2 FOR PRE-K – 5TH GRADE SITE PLAN



AES DESIGN OPTIONS

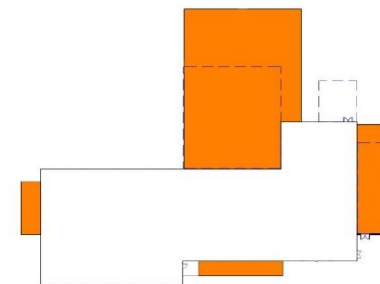
School Board Presentation



OPTION 2 FOR PRE-K – 5TH GRADE GROUND FLOOR

LEGEND

- CIRCULATION
- EXISTING CLASSROOM
- NEW CLASSROOM
- SPECIAL SERVICES
- SPECIALIZED CLASSROOM
- CORE AREAS
- EDUCATIONAL SUPPORT AREAS
- FACILITIES SUPPORT AREAS
- STORAGE AREAS



KEY PLAN

AES DESIGN OPTIONS

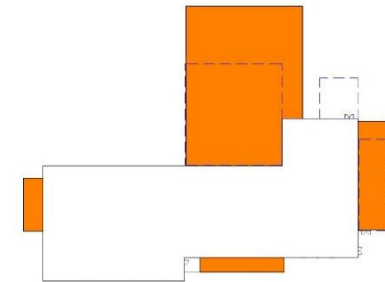
School Board Presentation



OPTION 2 FOR PRE-K – 5TH GRADE UPPER FLOOR

LEGEND

- CIRCULATION
- EXISTING CLASSROOM
- NEW CLASSROOM
- SPECIAL SERVICES
- SPECIALIZED CLASSROOM
- CORE AREAS
- EDUCATIONAL SUPPORT AREAS
- FACILITIES SUPPORT AREAS
- STORAGE AREAS



KEY PLAN

AES DESIGN OPTIONS

School Board Presentation



FINDINGS & RECOMMENDATIONS RECAP



ARD REPLACEMENT OPTIONS

School Board Presentation



FINDINGS

1. Facility Summary

- Building is in poor condition and investment to upgrade the facility is not recommended
- Divest current facility and find an alternate location to house the ARD population

2. Program Summary

- Site does not meet the NH DOE minimum size of 10 acres
- Add 1 classroom and add space to correct identified deficiencies
- Space deficiencies in Art, Music, Science classroom/lab, SPED, Administration, Nurse, & Kitchen need to be addressed
- Renovate areas such as Library & Administration to improve space utilization

ARD REPLACEMENT OPTIONS

School Board Presentation



TO DETERMINE NEEDS AND FACILITY AREA

1. Account for total number of students

- Add 10 students to project future growth
- Smaller schools can utilize a multi-use space for cafeteria, gym, and assembly: larger schools require 2 or more spaces

2. Square footage requirements

- Middle schools require between 160-180 SF per student
- Elementary schools require between 140-160 SF per student
- Combined elementary & middle require 160-180 SF per student
- *(Current ARD area = 36,030 SF is poorly laid out resulting in low SF utilization)*

3. Site size requirements

- Middle Schools require a minimum of 10 acres

ARD REPLACEMENT OPTIONS

School Board Presentation



ORDER OF MAGNITUDE REQUIREMENTS

1. Replace ARD in-kind with 5-8 Middle School on a new site

- 200 student population
- 32,000 – 36,000 SF building size
- *(Current area = 36,030 SF)*

2. Replace ARD with 6-8 Middle School on a new site

- 150 student population
- 24,000 – 27,000 SF building size

3. Replace ARD and AES with Pre-K - 8 School on a new site

- 420 student population
- 67,200 – 75,600 SF base building size
- 7,000 – 11,000 SF for additional support spaces such as separate gym and cafeteria

ARD REPLACEMENT OPTIONS

School Board Presentation



- **Develop preferred option** of comprehensive Pre-K – 8 solution
- **Complete Final Report** including assessments and design options
- **Next meeting** May 13, 6:00pm location TBD

NEXT STEPS

School Board Presentation





THANK YOU!

