



Als Ave B2-B24.1 approximately 600 ft 8" AC pipe. Als Ave. SMH B24.1-B25 approximately 370 ft 8" VCP pipe. Court Street B23-B23.3 approximately 385 ft 8" PVC pipe



Lubern Ave. C41-C44 approximately 815 ft. 8" AC pipe. Notre Dame Ave C32-C30 approximately 565 ft. 8" AC pipe. Notre Dame Ave. C30-C28 8" PVC pipe approximately 550 ft. Park Street SMH C40-C46 approximately 975 ft 8" AC Pipe. Howe St. approximately 515 ft. 8" AC pipe. Bailey Ave. C44-C36 approximately 490 ft 8" AC pipe. Ridge Rd. C28-C28.2 approximately 300 ft 8" VCP Pipe. Ridge Rd. approximately 335 ft 8" PVC Pipe.

4545 ft total



Notre Dame Ave. C28-C24 approximately 820 ft 8" AC pipe. Als Ave C27-C33 approximately 380 ft 8" PVC pipe.

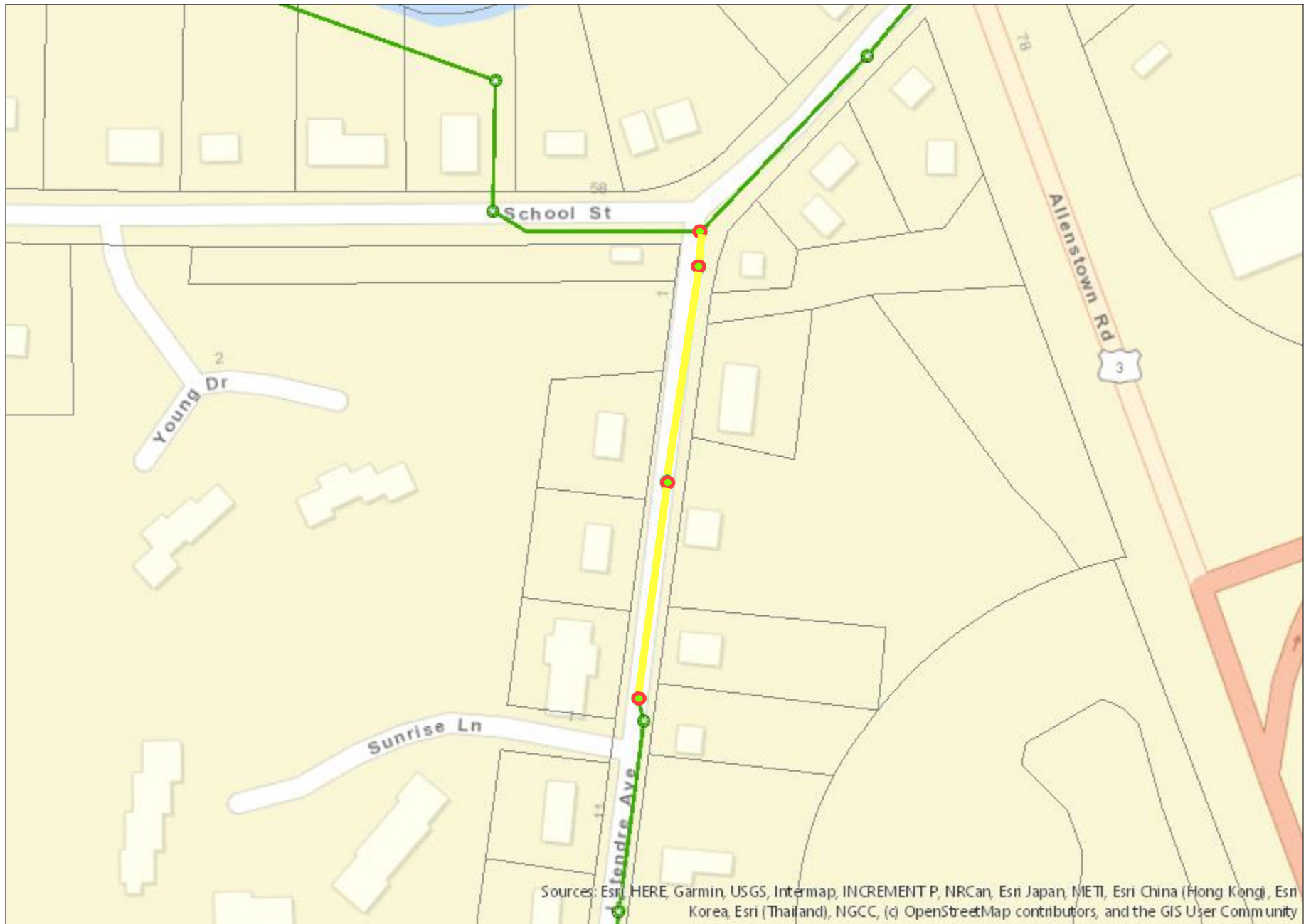
1200 ft total



Lincoln Street C48-C50 approximately 565 ft 8" PVC. Lincoln Street C50 to Letendre Ave C51 approximately 75 ft 6" AC pipe. Campbell St C58-C57 approximately 310 ft 8" VCP pipe. Campbell St. C57 to Letendre Ave C51 approximately 370 ft 8" PVC pipe



Letendre Ave. C51-C52 approximately 285 ft 6" AC pipe. Letndre Ave C52-C53 approximately 175 ft 6" AC pipe. Letndre Ave C53-C54.1 approximately 175 ft 8" AC pipe. Dawn Drive C52 to end of line approximately 430 ft unknown pipe and material.



Letendre Ave. C54.1-C9 approximately 430 ft 8" AC pipe.