

# Mid-State Regional Coordinating Council for Community Transportation



# Mid-State Regional Coordinating Council



# Mid-State Regional Coordinating Council

## PURPOSE

Raise  
Awareness

Encourage  
Collaboration

# Mid-State Regional Coordinating Council



1

- Mid-State RCC History & Initiatives

2

- Collaboration & Coordination of Efforts

3

- Available Transportation Options

4

- Ways to Support Your Community



# Mid-State Regional Coordinating Council

1

SCC - RSA 239-B  
2007

SCC-10  
Regions/RCCs  
2009 – R3/MS RCC  
– Lead Agencies

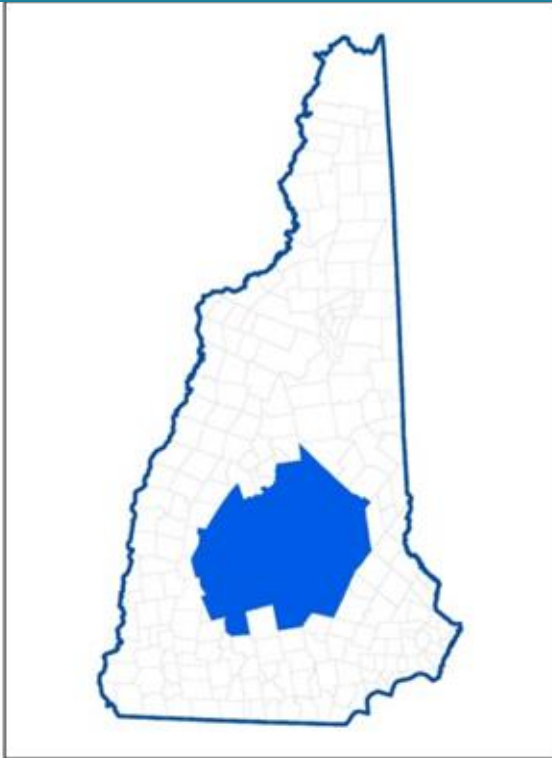
Coordinated  
Transit & Human  
Services  
Transportation  
Plan & Regional  
Ride Resource  
Directory  
2010



To improve mobility and access for all by coordinating regional and local community transportation services and information

# Mid-State Regional Coordinating Council

## Mid-State RCC Region



Belknap  
County



Merrimack  
County

- Hooksett
- + Towns of Hillsborough  
Deering & Windsor

# Mid-State Regional Coordinating Council

Who Are We?



- Key Human Service Agencies
- Transportation Providers
- Local Governments
- Funding Agencies
- For-Profit and Non-Profit Agencies
- Regional Planning Commissions
- Consumers and others



Mid-State RCC Meetings  
– Bimonthly,  
Every other Tuesday of the month;  
Concord /Lakes Region

Members



Membership is FREE



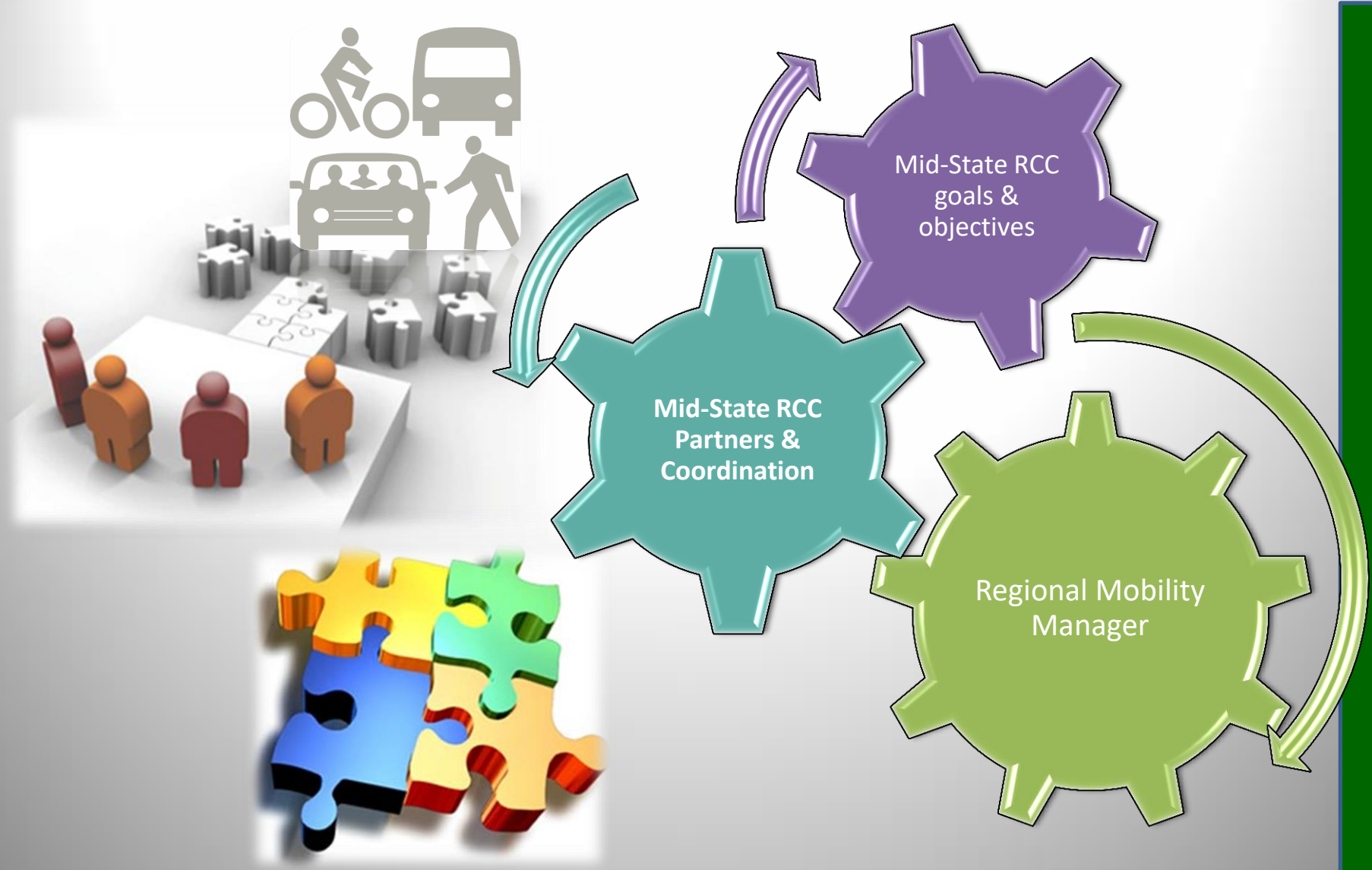
# Mid-State Regional Coordinating Council

Members

<p>Age At Home</p> 	<p>American Cancer Society, Inc.</p> 	<p>Ascentria In-Home Care</p> 	<p>Bank of New Hampshire</p> 	<p>Belknap Economic Development Council</p> 	<p>Central NH Regional Planning Commission</p> 	<p>City of Concord</p> 	<p>Community Action Program Belknap Merrimack Counties</p> 
<p>Community Bridges NH</p> 	<p>Council on Aging Chapin Senior Center - Kearsarge</p> 	<p>D&amp;B Taxi &amp; Courier Services, LLC</p> 	<p>Department of Corrections—Merrimack County</p> 	<p>Engaging NH</p> 	<p>Friends Program RSVP</p> 	<p>Future in Sight</p> 	<p>Granite State Independent Living</p> 
<p>Genesis Behavioral Health</p> 	<p>Granite United Way</p> 	<p>Interlakes Community Caregivers, Inc.</p> 	<p>Lakes Region Community Services</p> 	<p>Lakes Region Chamber of Commerce</p> 	<p>Lakes Region Planning Commission</p> 	<p>NH Catholic Charities</p> 	<p>NH Vocational Rehabilitation</p> 
<p>Partnership for Public Health</p> 	<p>Pembroke Academy</p> 	<p>Riverbend Community Mental Health</p> 	<p>St. Joseph's Community Services, Inc.</p> 	<p>Town of Hillsborough</p> 	<p>Town of Tilton</p> 	<p>Town of Windsor</p> 	<p>White Rock Senior Living Community</p> 



# Mid-State Regional Coordinating Council



# Mid-State Regional Coordinating Council



## History & Initiatives

New Hampshire Legislature (RSA 239-B) creates the State Coordinating Council (SCC)

SCC creates 10 Transportation Regions and Regional Coordinating Councils (RCCs)

Region 3 renamed to Mid-State RCC/Lead Agencies

Coordinated Transit & Human Services Transportation (CTHST) Plan & Regional Ride Resource Directory

FTA 5310 P.O. Funds for Volunteer Driver Program & VDP Network created

FTA Funds - Regional Transportation Coordinator (RTC) & Expansion of Rural Transportation System (RTS)

FTA 5310 P.O -Pilot Taxi Voucher Program (PTVP) est. June 6, 2016 for MCDOC

Run/improve existing services; create additional TVPs; update CTHST plan; increase collaboration

2007

2009

2010

2011



2013



2016



2017-2018

Mid-State Regional Coordinating Council, New Hampshire

# Mid-State Regional Coordinating Council

2

**Why do we do what we do?  
Why coordinate?**



**Quality of Life & Mobility**



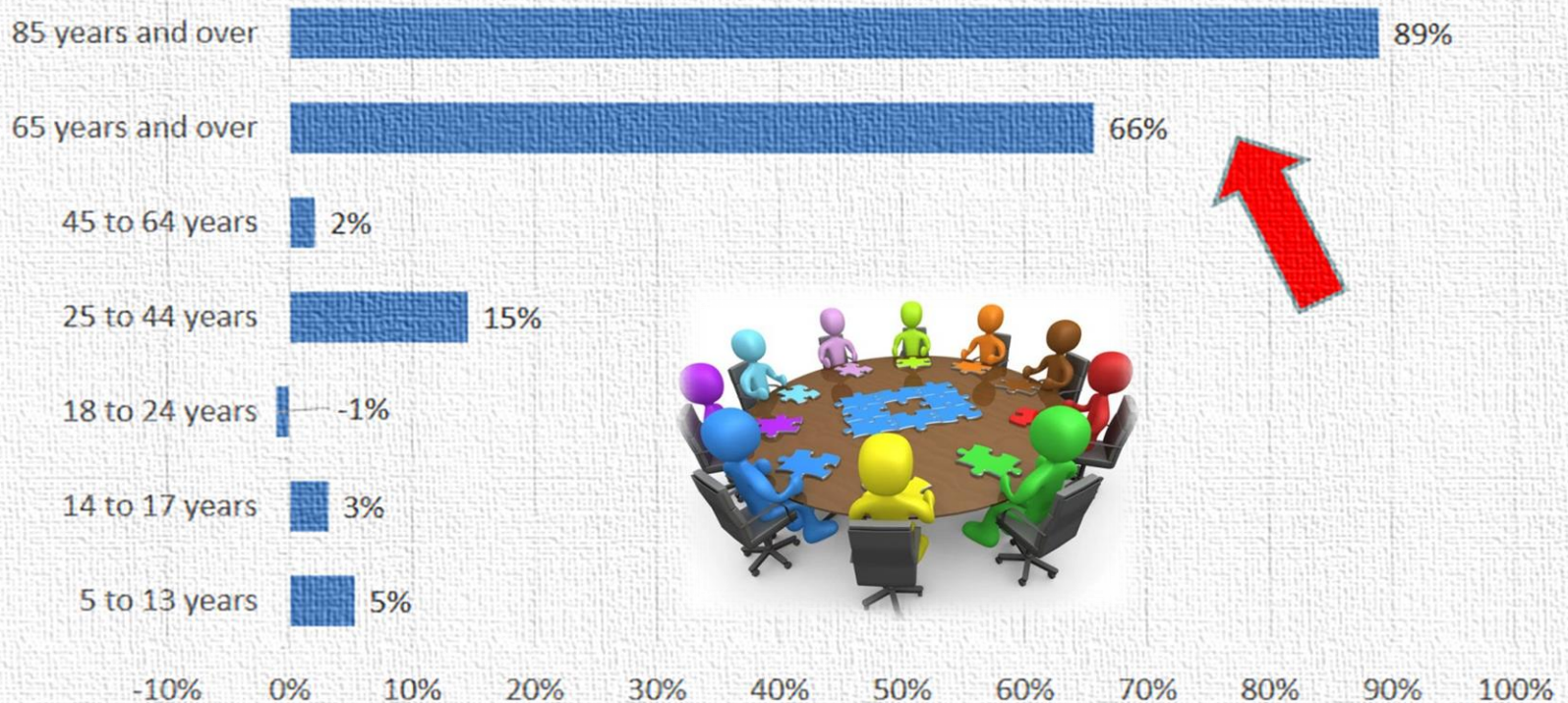
# Mid-State Regional Coordinating Council

N H C P P S

New Hampshire Center  
for Public Policy Studies

## Aging Is Everywhere

Percent Change in Population: National Projections 2015-2035





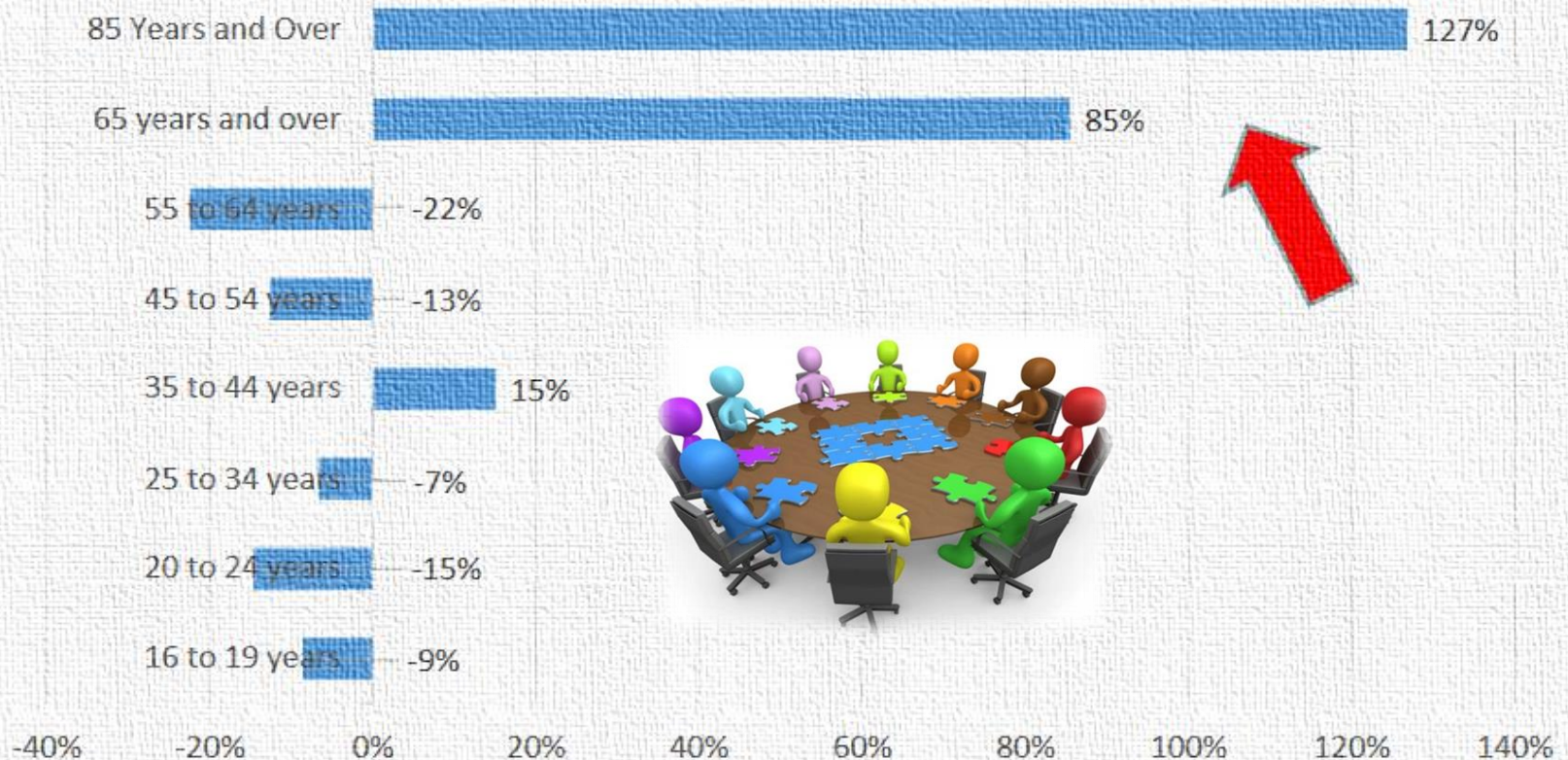
# Mid-State Regional Coordinating Council

N H C P P S

New Hampshire Center  
for Public Policy Studies

## But more so in NH

Percent Change in Population: NH Population Projections 2015-2035





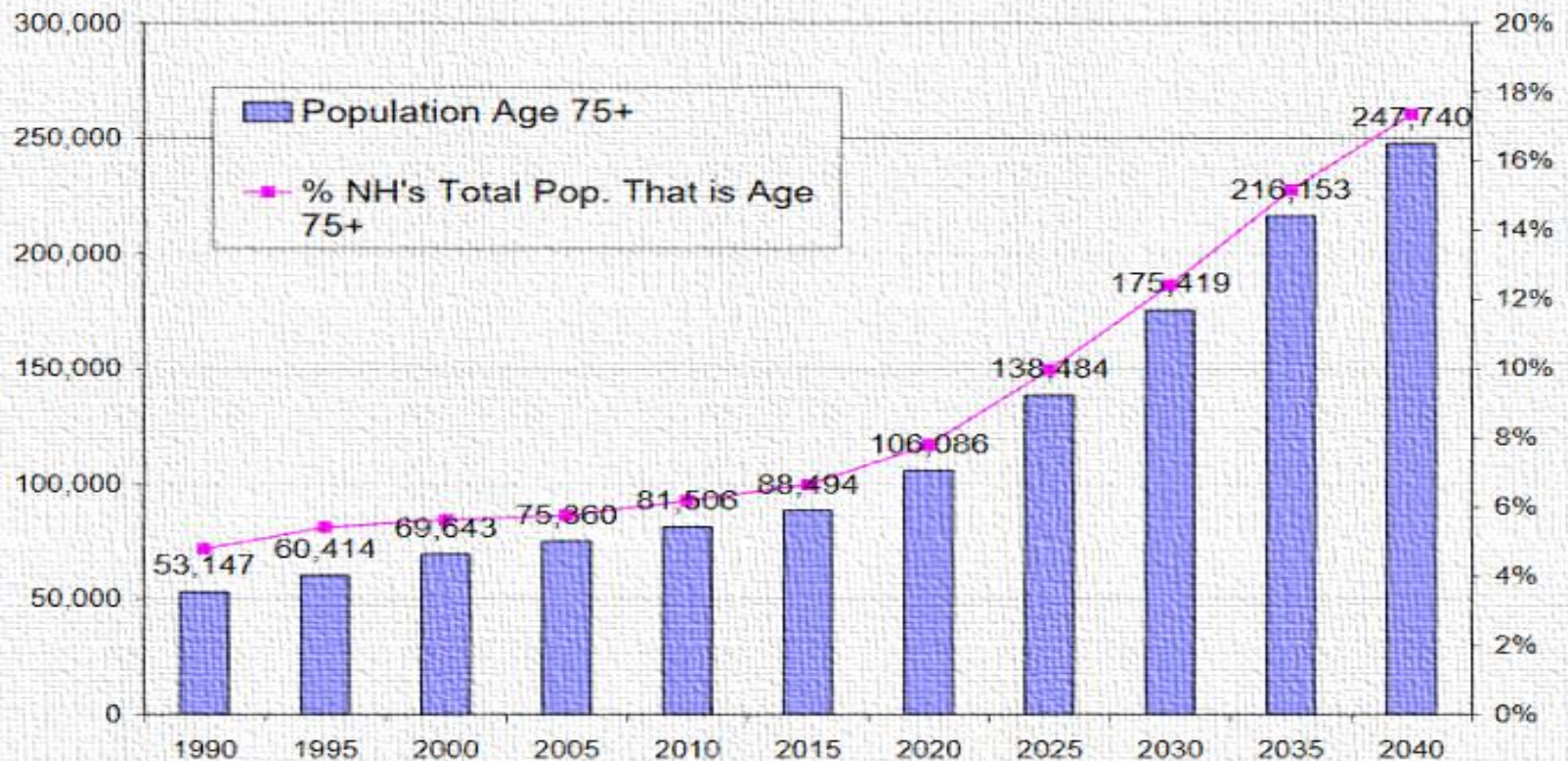
# Mid-State Regional Coordinating Council

N H C P P S

New Hampshire Center  
for Public Policy Studies

## Timing: Are we old? Not yet, but getting there ...

The Largest Impact of Aging will occur after 2020



# Mid-State Regional Coordinating Council

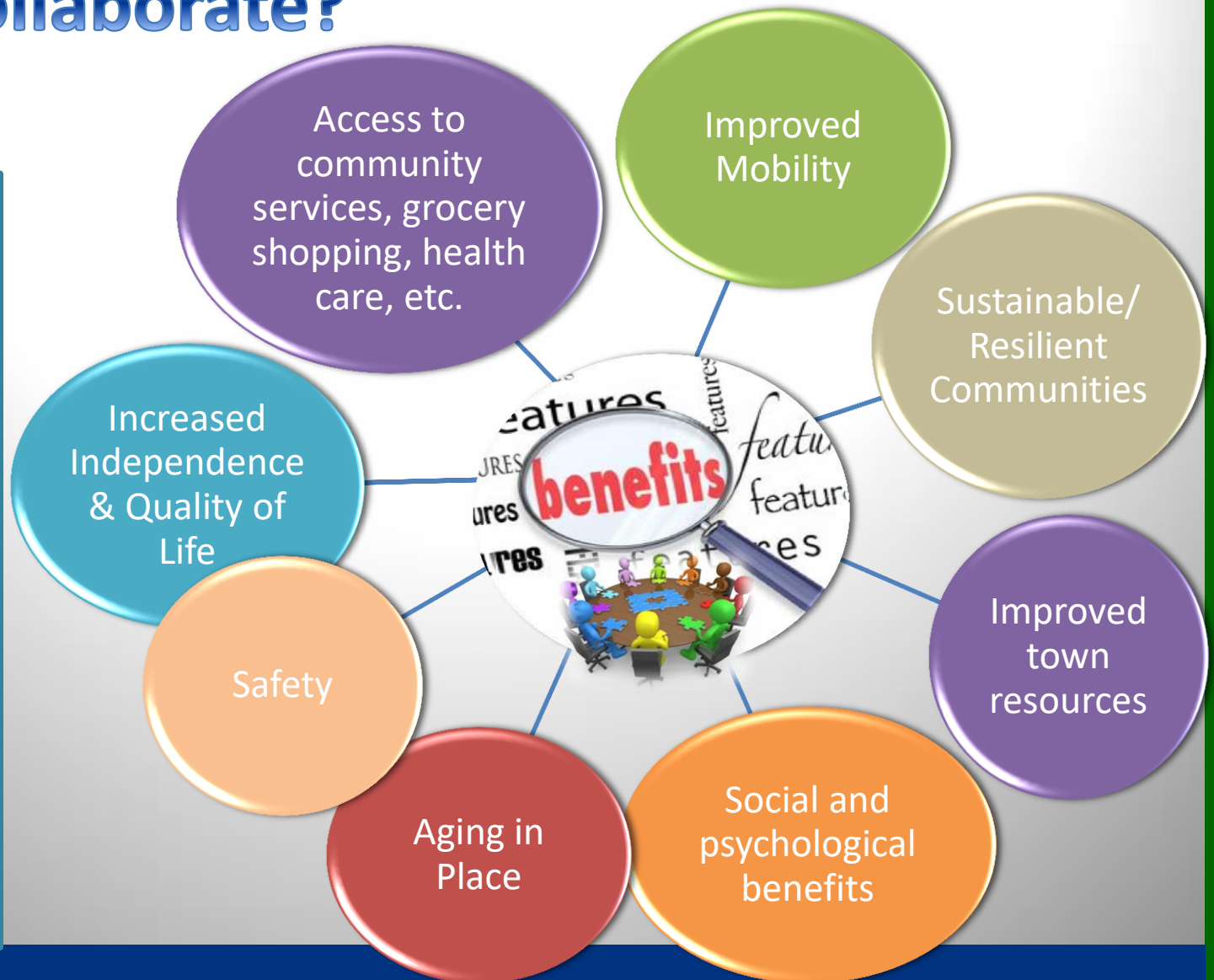
## Why collaborate?



### Allenstown

2010 U.S. Census

- Total population **4322**
- Median Age **40**
- **767** seniors or **17.71%** (60-85+)





# Mid-State Regional Coordinating Council

## Community Transportation Transportation options

3

- CAT
- Very Limited rides on Thursdays (Bow & Pembroke)
- 8am-3pm
- Any trip purpose
- Registration/Reservation required
- \$1 suggested donation each one way

CST



- MS RCC Initiative-CAT
- Monday-Fridays
- 5am-6pm
- 2 rides a week/3 dialysis
- Medical, grocery, banking
- Application/Reservations required
- \$1 suggested donation each one way

VDP



# Mid-State Regional Coordinating Council

4

## What can you do to help?

### Join the RCC!



- Collaborate with the Mid-State RCC & key transportation stakeholders
- Provide a link to the Mid-State RCC Website & Ride Resource Directory
- Provide additional support whenever possible



# Mid-State Regional Coordinating Council

For every dollar spent on transportation communities get about \$4 in economic returns?

The average price of building a garage parking in 2012 was \$34K?

If you are renting an apartment w/o a car, 16% of your rent pays for parking you did not need? (i.e. \$1700 per year or \$142/month)

\*2011 National American Housing Survey data of the US Census

**DID YOU  
KNOW ... ?**



Larisa Djuvelek-Ruggiero  
**Regional Mobility Manager**

**Mid-State RCC - [www.midstatercc.org](http://www.midstatercc.org)**

CAPBMCI-P. O. Box 1016 Concord, NH 03302-1016

603.225.3295, [mobilitymanager@bm-cap.org](mailto:mobilitymanager@bm-cap.org)

