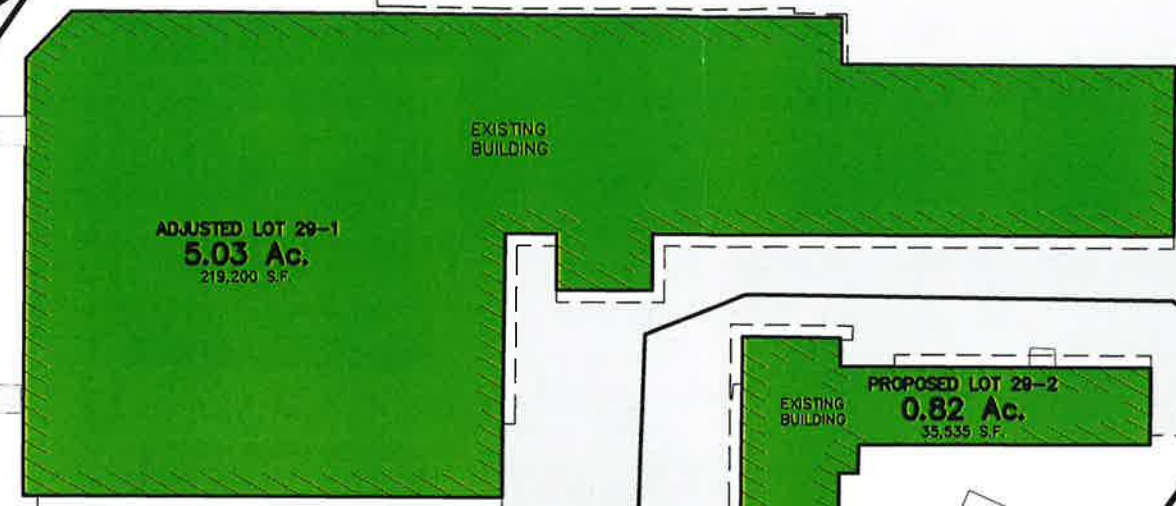


ROUTE 3
(APPROXIMATE 125' ROW)

ROUTE 28
(APPROXIMATE 150' ROW)

MAP 109 LOT 30
SANDY'S CLASSIC TOUCH, LLC
38 SOUTH POLCY STREET
SALEM, NH 03079
0.55 Ac. (23,958 S.F.) PER TAX CARD



MAP 109 LOT 17
OCEAN REALTY TRUST
9772 BLUE STONE CIRCLE
FORT MYERS, FL 33913
3458/554

MAP 109 LOT 28
15 CHESTER TURNPIKE, LLC
679 1ST NH TURNPIKE
NORTHWOOD, NH 03291
2.57 Ac. (111,848 S.F.) PER TAX CARD

CHESTER TURNPIKE
(APPROXIMATE 50' ROW)

EXISTING LOT	EXISTING AREA	EXISTING IMPEVIOUS	PROPOSED LOT	PROPOSED IMPEVIOUS
LOT 29	64,791 SF	40,535 (62.5%)	32,472 SF	22,452 (69.1%)
LOT 29-1	222,416 SF	164,455 (73.9%)	219,200 SF	157,376 (71.8%)
LOT 29-2			35,535 SF	25,162 (70.8%)
				24,697 (69.5%)
				(REMOVE 465 SF OF BASKETBALL COURT)

MAP 109 LOT 18
JUSTINE & CHARLES CURRIER
18 MAPLE STREET
PEMBROKE, NH 03275
11.1 Ac. (483,816 S.F.) PER TAX CARD

REV.	DATE	DESCRIPTION	BY
REVISIONS			

IMPERVIOUS CALCS PLAN
TAX MAP 109 LOTS 29 & 29-1
3 CHESTER TURNPIKE
ALLENSTOWN, NH

OWNER:
CJL, LLC
400 BEDFORD STREET, MANCHESTER, NH 03101

AUGUST 5, 2019

SCALE: 1" = 40'

PREPARED BY
ERIC C. MITCHELL & ASSOC. INC.
PLANNING - SURVEYING - ENGINEERING - ENVIRONMENTAL
P.O. BOX 10298, 106 SO. RIVER RD., BEDFORD N.H. 03110-0298
PH. (603) 627-1181