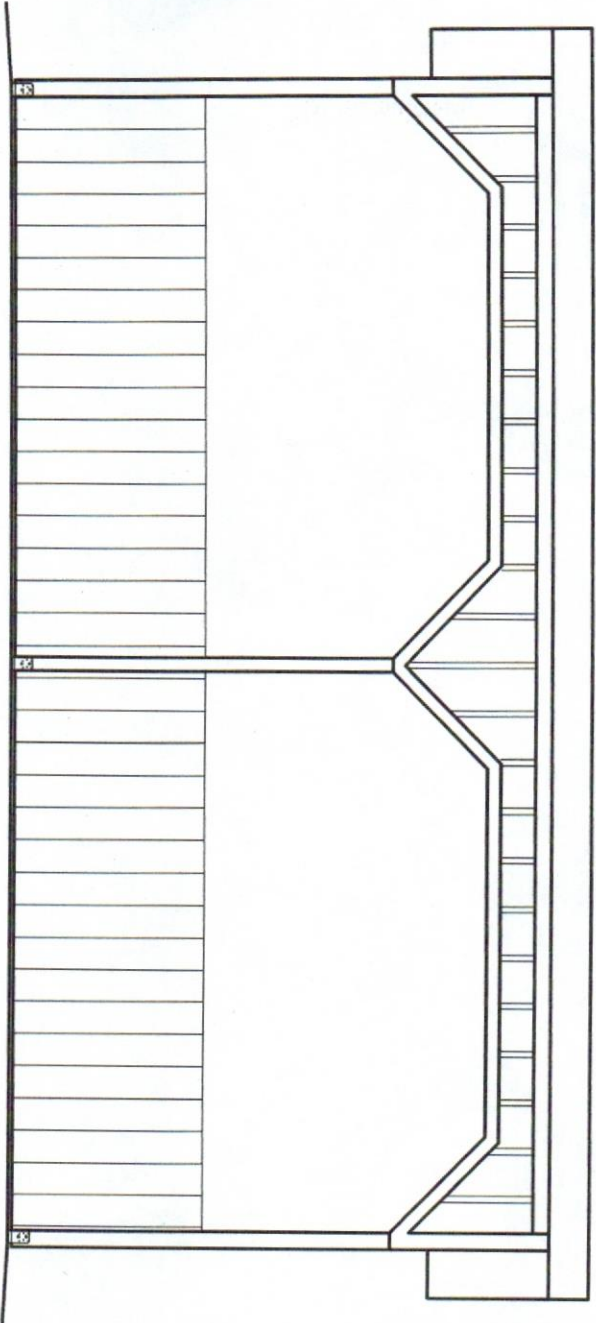


DRAWING INDEX

Page 1	Title Sheet
Page 1.1	Notes
Page 1.2	Notes
Page 2	Floor Plan
Page 2.1	Alternate Floor Plan
Page 3	Exterior Elevations
Page 3.1	Exterior Elevations
Page 4	Skid Foundation Plan
Page 5	Not Used
Page 6	Wall Framing Plans
Page 6.1	Wall Framing Plans
Page 7	Roof Framing Plans
Page 7.1	Rafter Details
Page 7.2	Rafter Birdsmouth Template
Page 7.3	Rafter Birdsmouth Template
Page 7.4	Rafter Birdsmouth Template
Page 7.5	Roof Sheeting Plan
Page 8	Section
Page 8.1	Details
Page 8.2	Details
Page 8.3	Details

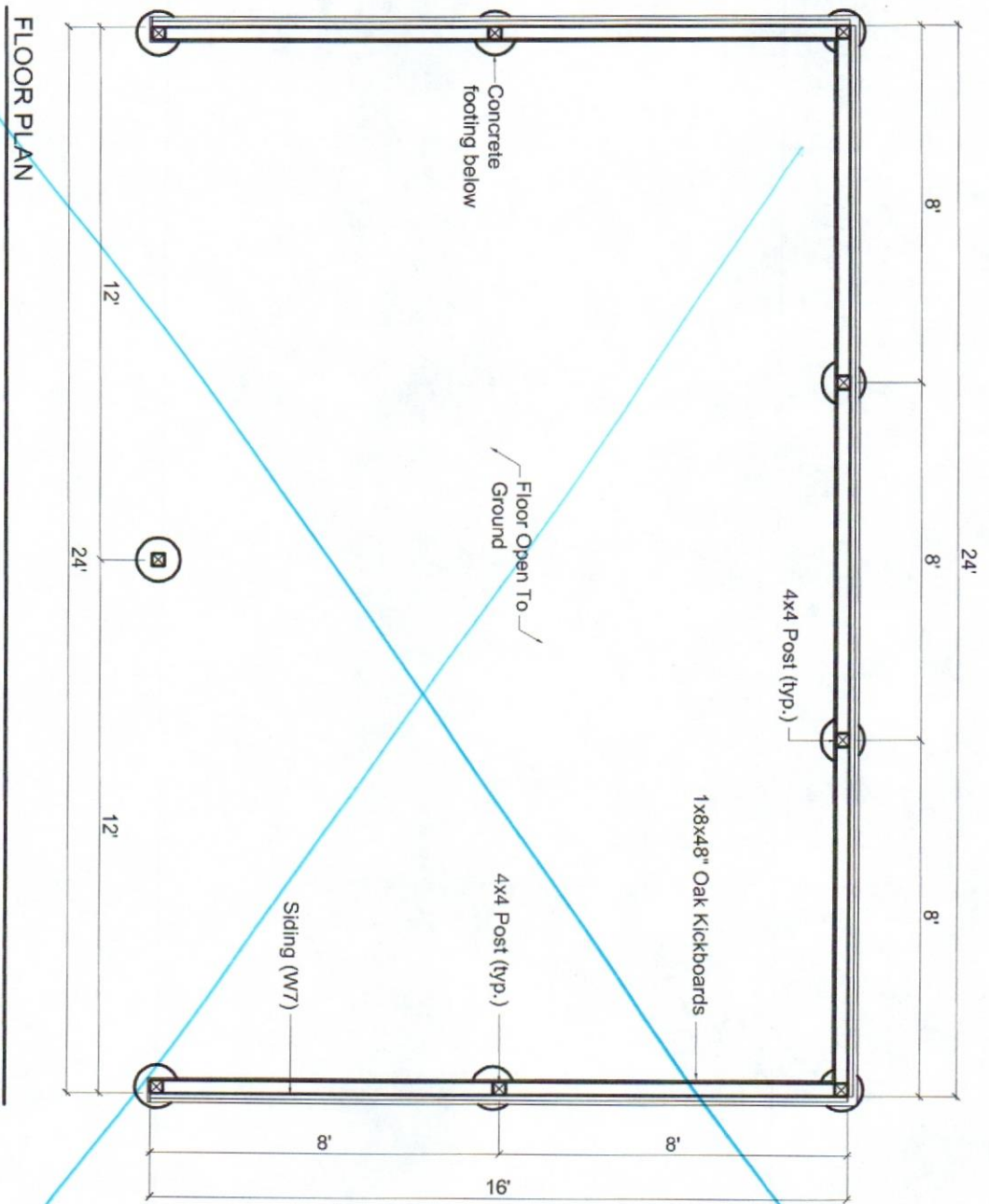


16X24 RUN IN SHED

Please view and download the **HOW TO BUILD A SHED** tutorial at
<http://www.icreatables.com/sheds/how-to-build-shed/how-to-build-a-shed-download.html>

Copyright © 2014 BIG IDEA DESIGNS. All rights reserved. To read our License agreement and Legal Disclaimer, please visit our website and click on the terms button at the bottom of the page in our Shed Plans section or read it in the How To Build a Shed Instructions from [icreatables.com](http://www.icreatables.com). All images and information contained in these plans are copyrighted and may not be distributed, modified or reproduced in whole or in part without the prior consent of Big Idea Designs, llc. These plans are for personal, non commercial use only. These plans are for single use. User of these plans should contact a local structural engineer, architect or government building official to verify that the Plans and other Building Documents meet local code requirements and site conditions.

Title Sheet 1



FLOOR PLAN

Floor Plan 2

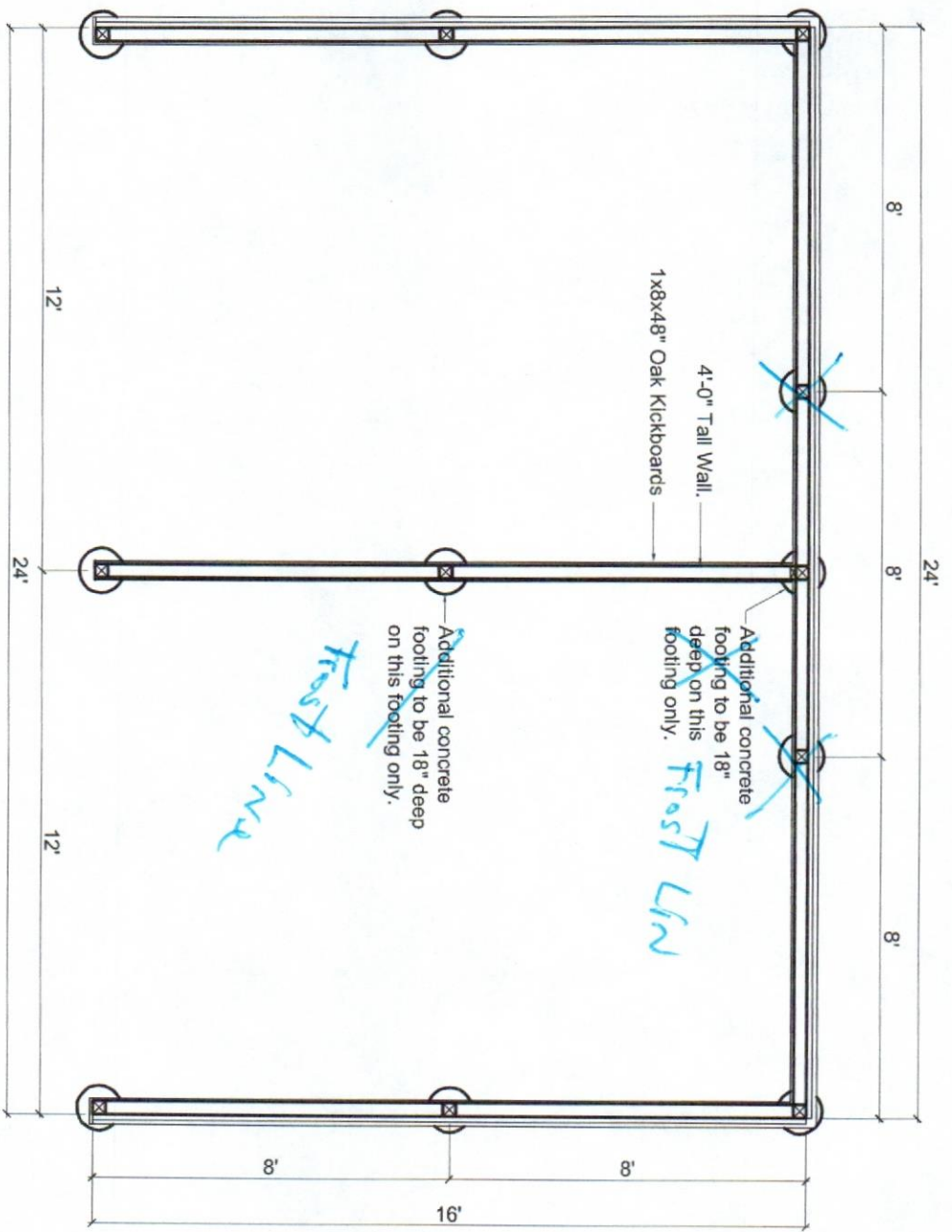
We will use option 6.2 floor plan

All Beams will be rough cut dimensions 2x12x12 doubled oak

We will forego the 2 footings at 8' intervals continue with 16' spacing (6.2)

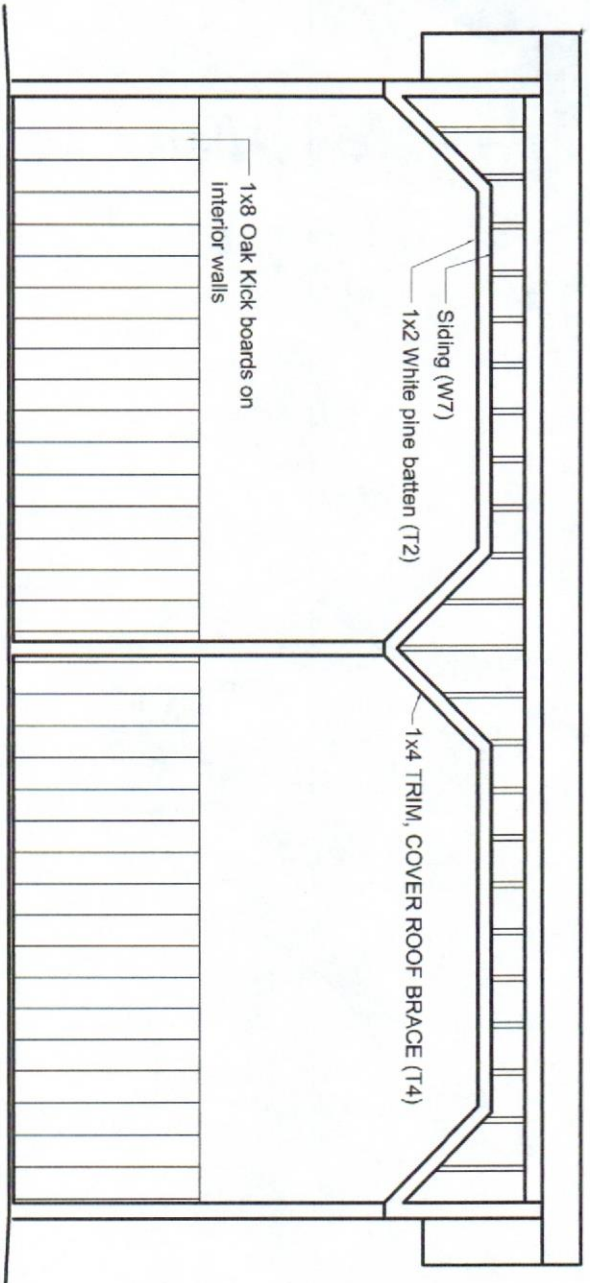
All footings will be below frost-line

Roof stringers will be 2x10x10 therefore will add beams 2x12x12 doubled across middle

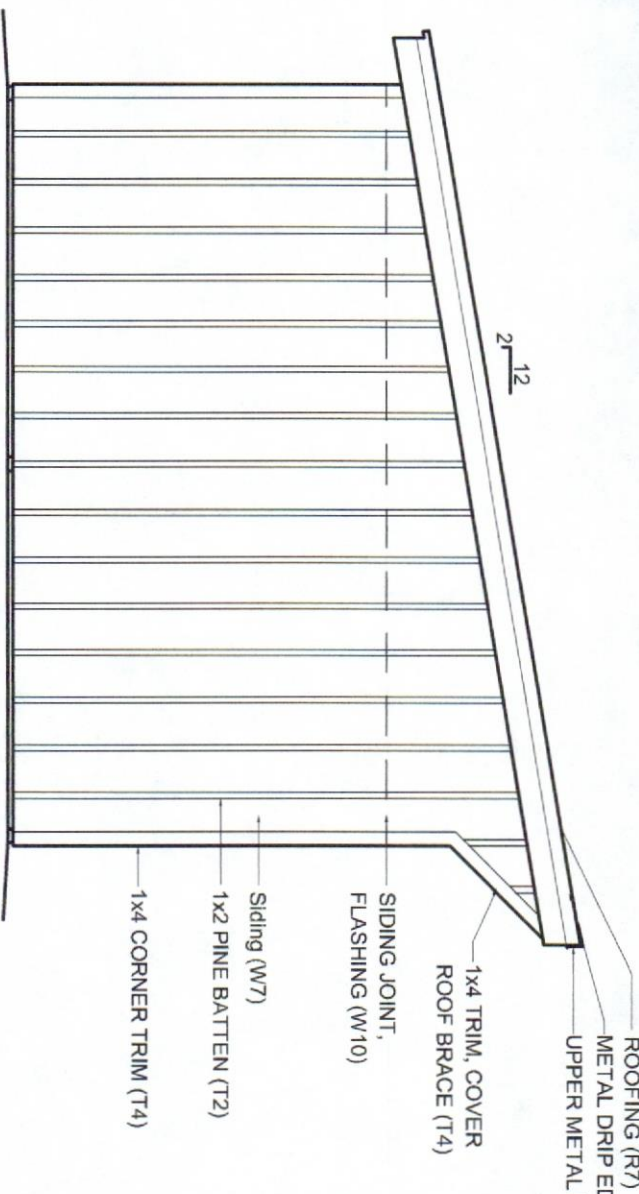


ALTERNATE FLOOR PLAN - SHOWING DIVIDER WALL

Alternate Floor Plan **2.1**



FRONT ELEVATION



LEFT SIDE ELEVATION

ROOFING (R7)
METAL DRIP EDGE (R5)
UPPER METAL DRIP EDGE (R5.1)

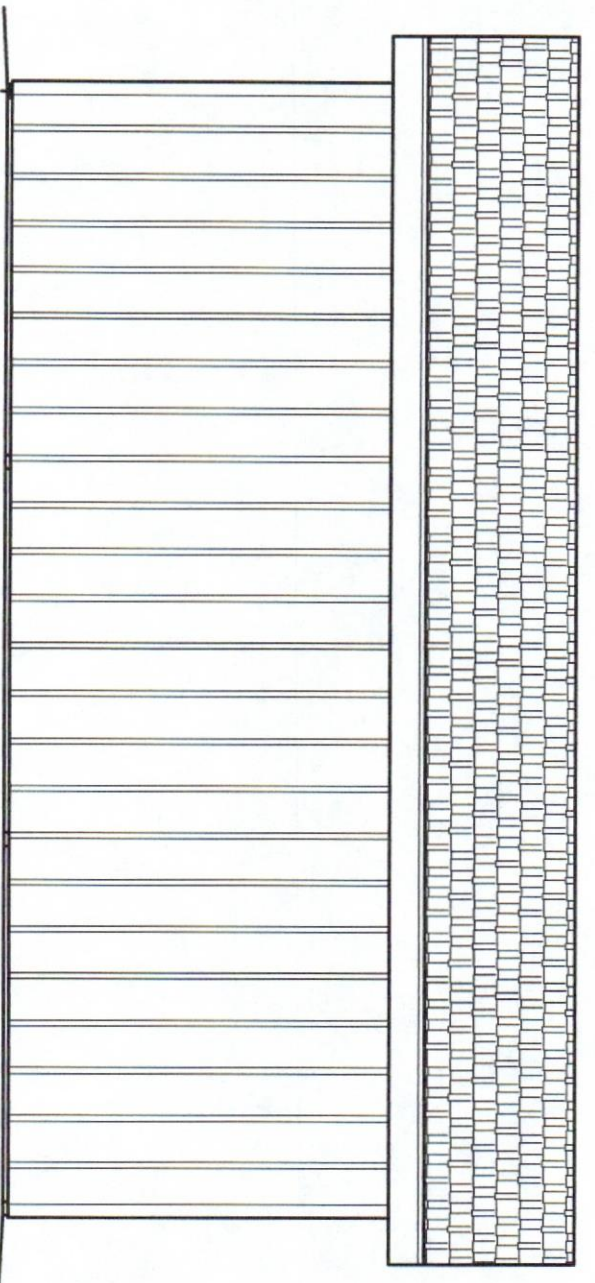
SIDING AND ROOFING MATERIALS

CODE	DESCRIPTION	LENGTH	QTY.
W7*	4x8 Plywood	4x8x $\frac{7}{8}$ "	28
T4	1x4 Trim	10'-0"	12
R5	Roof Drip Edge	1 $\frac{1}{2}$ " x 1 $\frac{1}{2}$ " x 10'	11
R5.1	Roof Drip Edge	3" x 3" x 10'	3
R6	Ice and Water Shield	5.3 Squares (508 SF)	
R7	Shingles	5.3 Squares (508 SF)	
W10	"Z" metal flashing	10'-0"	4

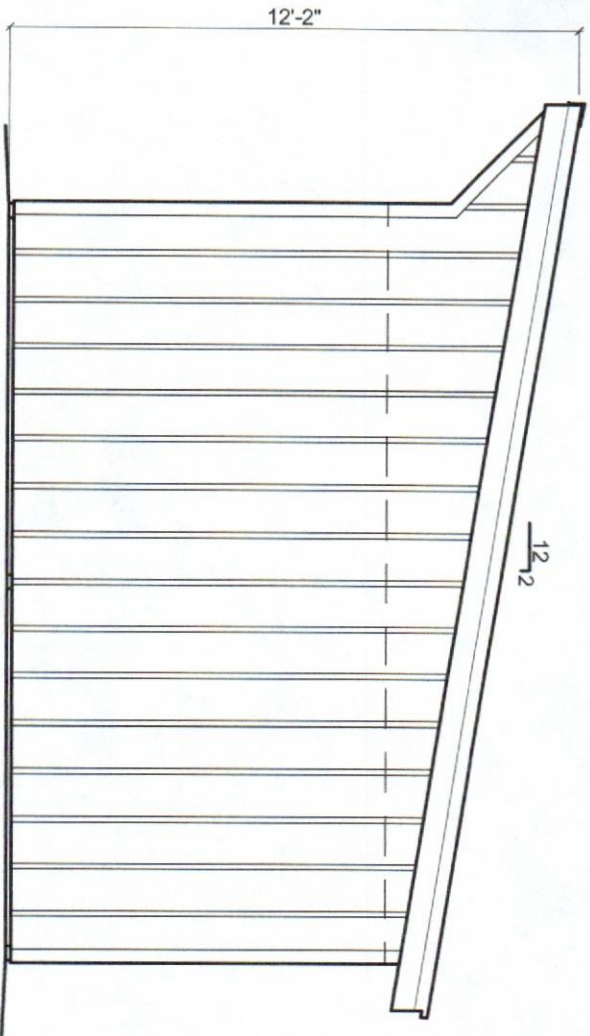
OPTIONAL MATERIALS

T2	1x2 Pine Battens	10'-0"	80
*W7	1x10 Pine Boards	10'-0"	50
*W7	1x10 Pine Boards	8'-0"	30
R7	36" wide PBR metal roof	19'-7 $\frac{1}{2}$ "	9

Notes:
-When using asphalt shingles make sure to use the manufactures recommended installation technique for low slope roofs.
-Metal fascia may be installed over 2x fascia or 2x fascia may be painted.
* Other sidings may be used. Corrugated metal panels or T1-11 Plywood.



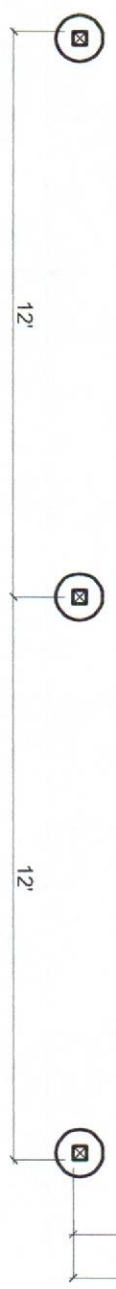
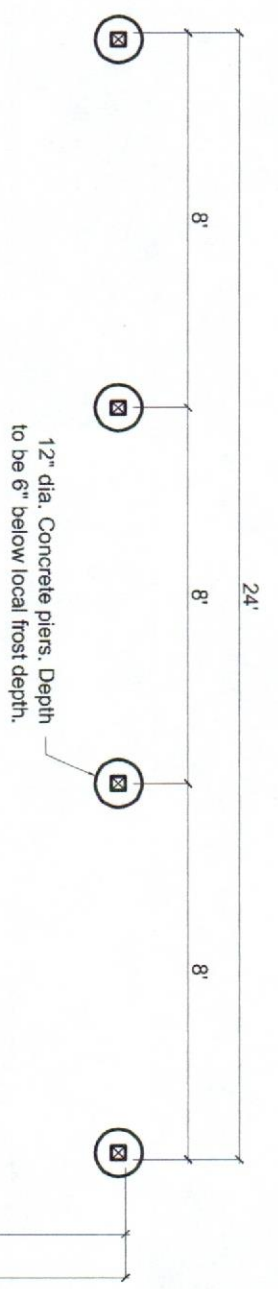
REAR ELEVATION



RIGHT SIDE ELEVATION

Exterior Elevations **3.1**

Copyright 2014 Big Idea Designs. www.bigideadesigns.com

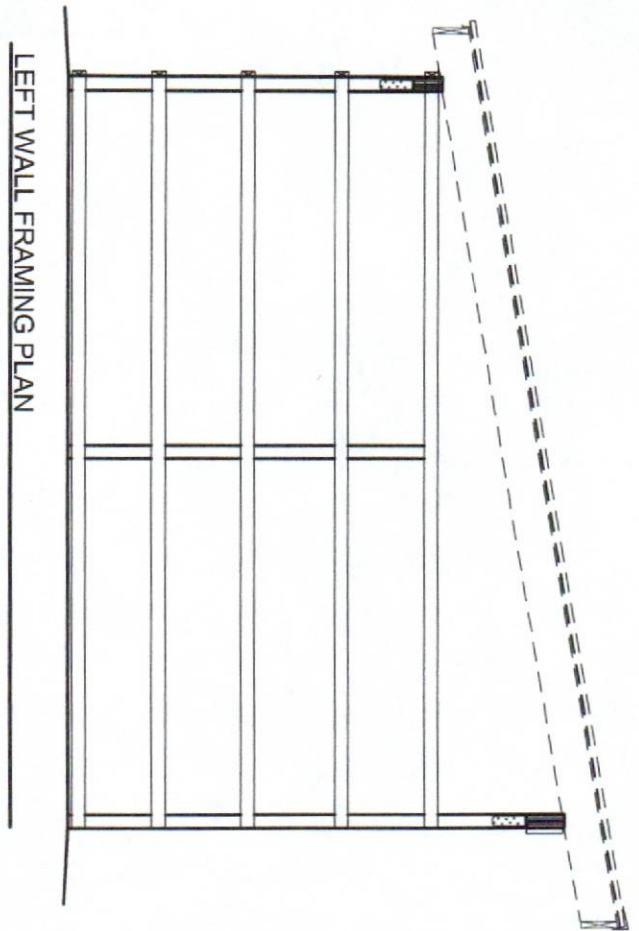


FOUNDATION PIER PLAN

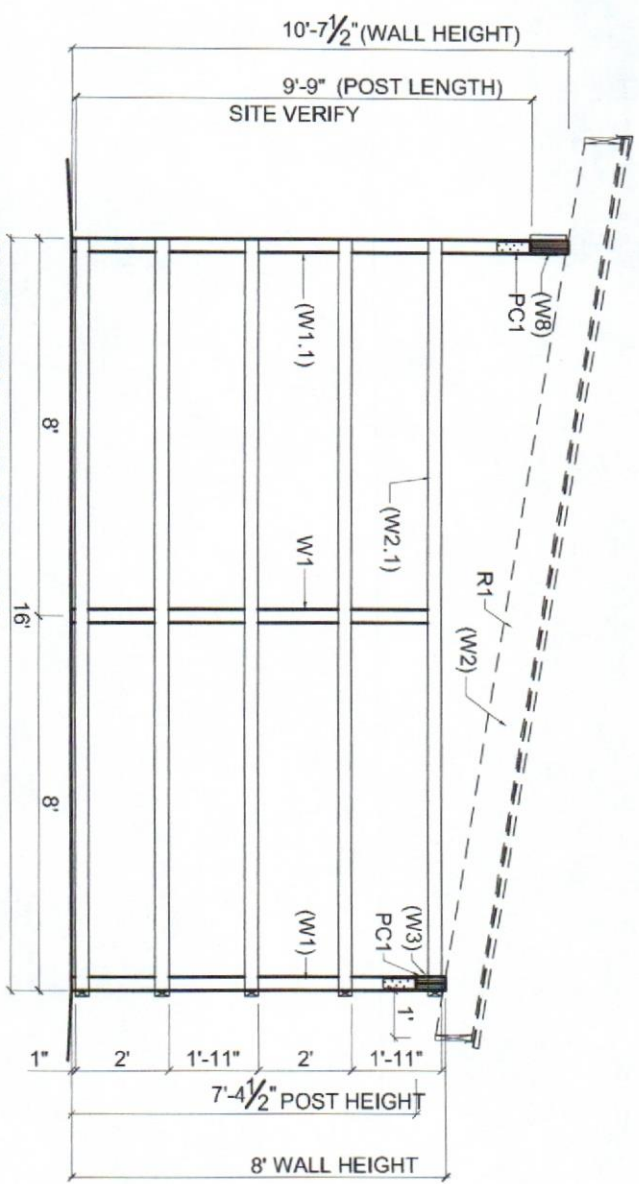
FOUNDATION MATERIALS

CODE	DESCRIPTION	LENGTH	QTY.
OPTIONAL POST BASE			
F9	Simpson CBSQ44 or equiv. post base		9
F12	12" Round Concrete Footings.	Install to below frost depth	9

NOTE: Post bases are not used when installing posts as direct burial. Install footings per building section and details.



LEFT WALL FRAMING PLAN



RIGHT WALL FRAMING PLAN

All angle brace cuts to be 45 degrees. Framing is the same with either buried post or concrete foundations. Concrete Foundation Shown.

WALL FRAMING MATERIALS

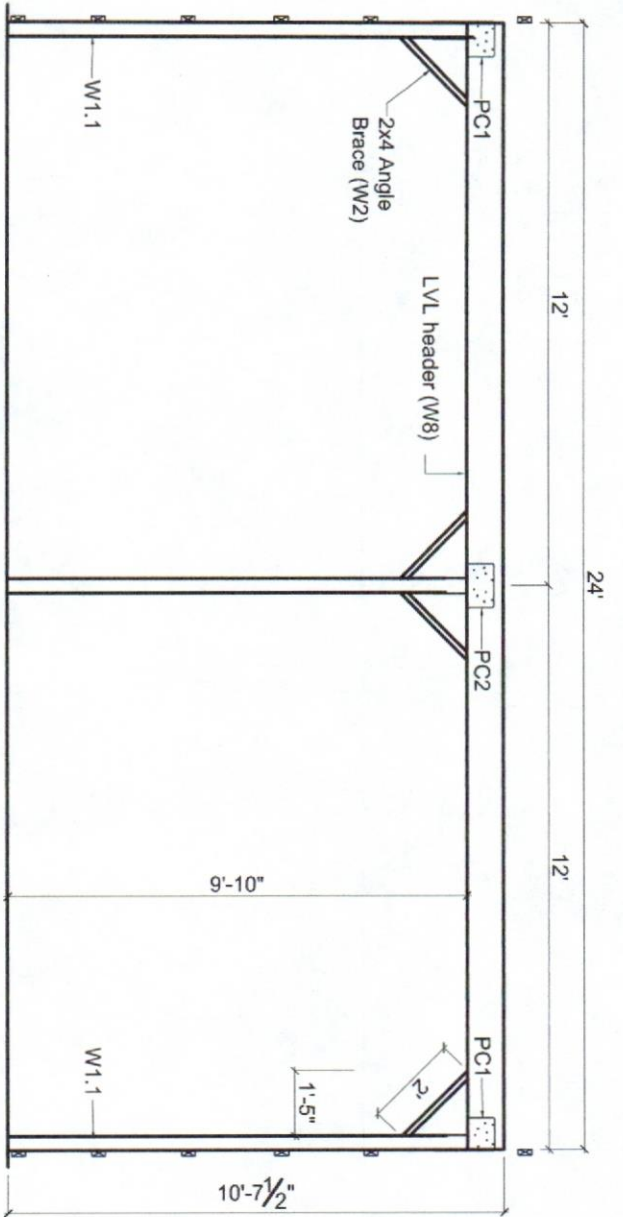
CODE	DESCRIPTION	LENGTH	QTY.
W1	4x4 Treated Post	12'-0"	6
W1.1	4x4 Treated Post	14'-0"	3
W2	2x4 Girt Boards/Kick Board Support	16'-0"	10
W2.1	2x4 Girt Boards/Kick Board Support	16'-0"	12
W3	1 3/4" x 7 1/4" LVL Beam	24'-0"	2
W3*	1X8 Oak Kick Boards	8'-0"	42
W8	1 3/4" x 9 1/2" LVL Beam	24'-0"	2
PC1	Simpson Post Cap	ECC044SDS2.5	4
PC2	Simpson Post Cap	CCQ44SDS2.5	3

* Kick boards may be substituted with 4x8x 3/4" O.S.B. sheets 6

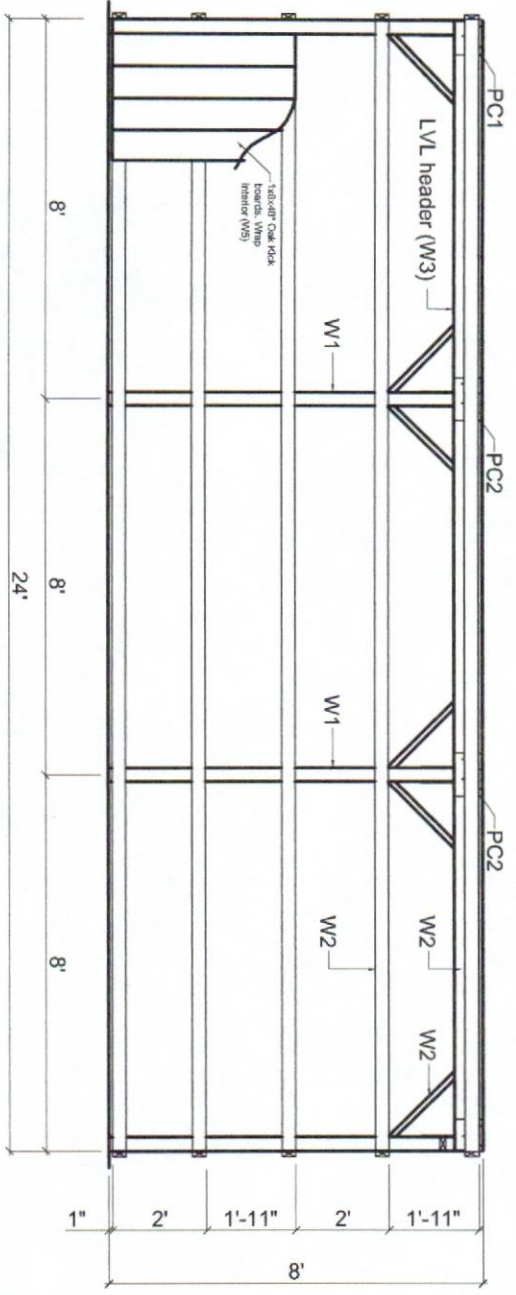
DIRECT BURIED POSTS NOTES AND MATERIALS

W1 and W1.1	Posts must be lengthened when using direct burial foundation.		
W1	4x4 Treated Post	8'-0"	6
W1.1	4x4 Treated Post	10'-0"	3

NOTE: Roof beams are sized for 30lb. live load and 15lb. dead load. Any change to this should be approved by a local structural engineer of building department because local snow loads may vary.

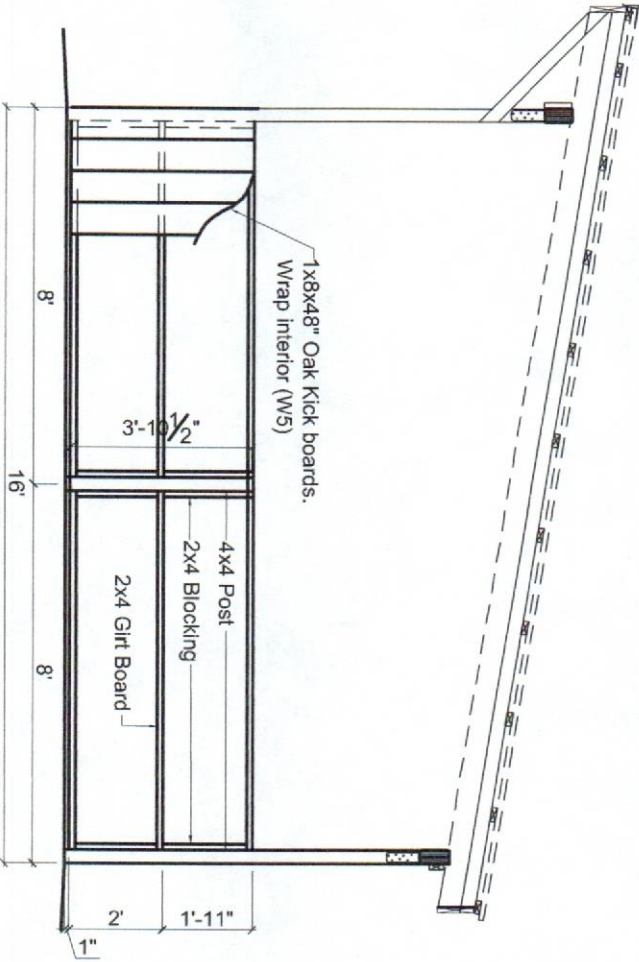


FRONT WALL FRAMING PLAN



REAR WALL FRAMING PLAN

Wall Framing Plans 6.1



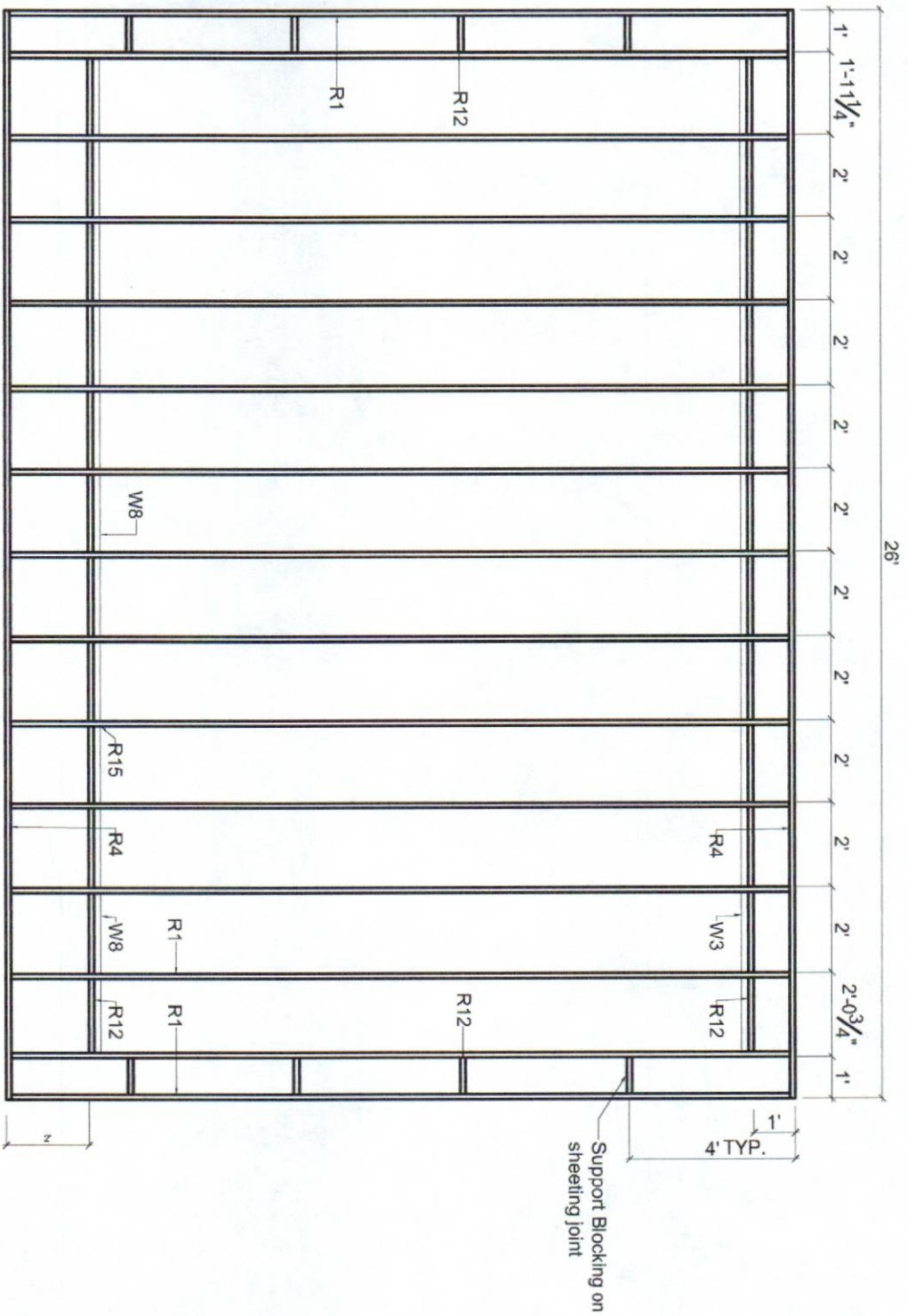
ALTERNATE INTERIOR WALL FRAMING PLAN

All angle brace cuts to be 45 degrees. Framing is the same with either burried post or concrete foundations. Concrete Foundation Shown.

OPTIONAL WALL FRAMING MATERIALS
(Not included in general materials list)

CODE	DESCRIPTION	LENGTH	QTY.
W1	4x4 Treated Post	8'-0"	1
W2	2x4 Girt Boards/Kick Board Support	12'-0"	5
W5*	1X8 Oak Kick Boards	8'-0"	20
F9	Simpson ABU44 or equiv. post base		2

* Amount of kickboards are for both sides of wall



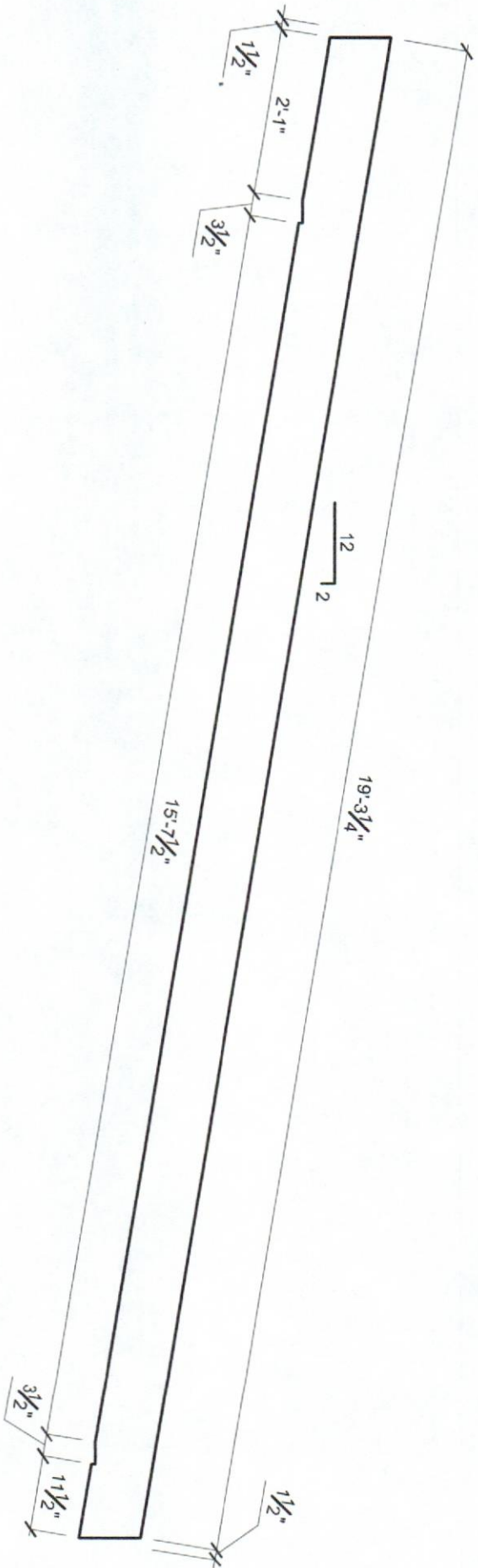
ROOF FRAMING PLAN

ROOF FRAMING MATERIALS

CODE	DESCRIPTION	LENGTH	QTY.
R1	2x10 Rafter	20'-0"	15
R2	O.S.B. Roof Sheeting	4'x8'x $\frac{7}{8}$ "	17
R2.1**	2x4 Roof purlin (optional)	14'-0"	22
R4	2x10 Fascia	14'-0"	4
R12	2x10 Blocking	12'-0"	4
R15	Simpson H2.5 Hurricane Tie		26

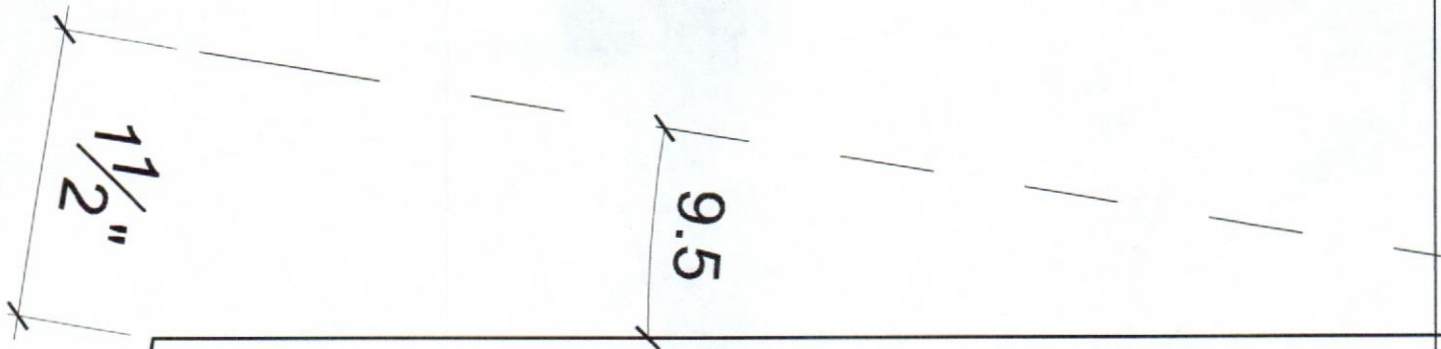
NOTES:

-See exterior elevations for roofing materials.
 *-2x4 purlins (R2.1) may be used in place of $\frac{7}{8}$ " O.S.B. as long as diagonal bracing is installed on the underside of the roof rafters. O.S.B. Sheeting is not used when purlins are used.



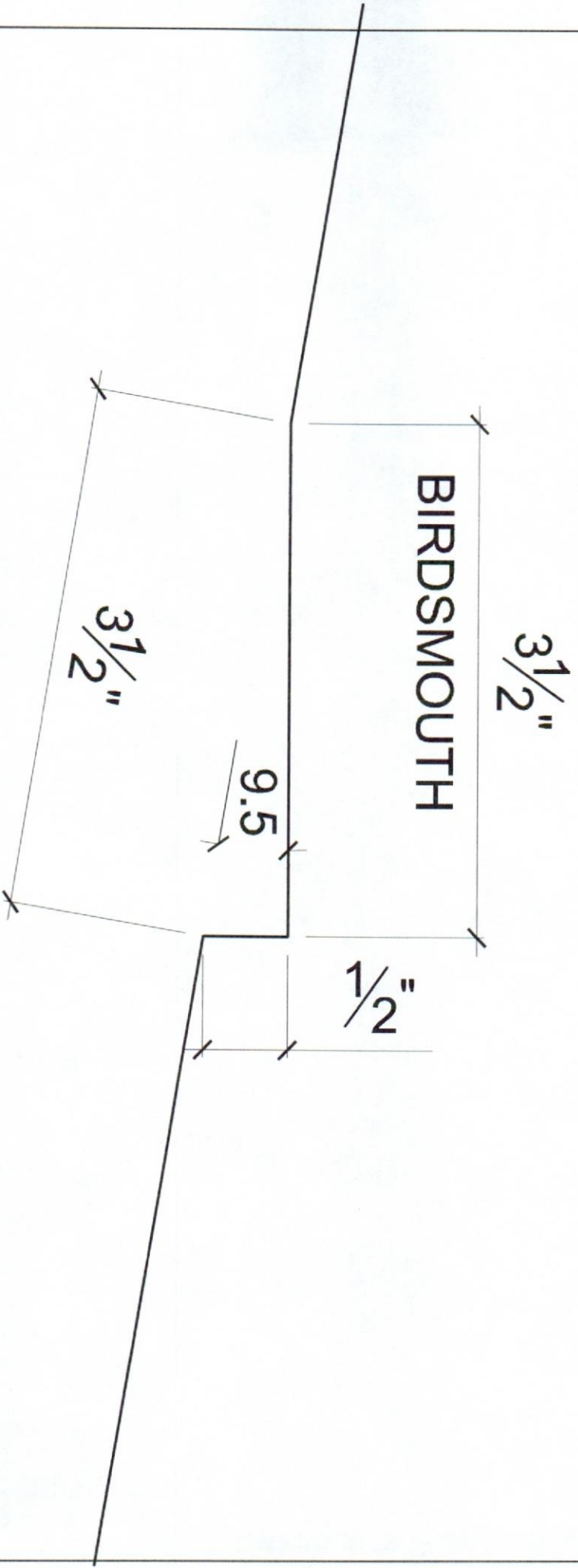
RAFTER DETAIL (R1.1)

1/2" = 1'-0" SEE THE ROOF TRUSS TEMPLATE DETAIL FOR BIRDSMOUTH ANGLE CUTTING INFORMATION



R1 TOP EVE / RIDGE - 2x10

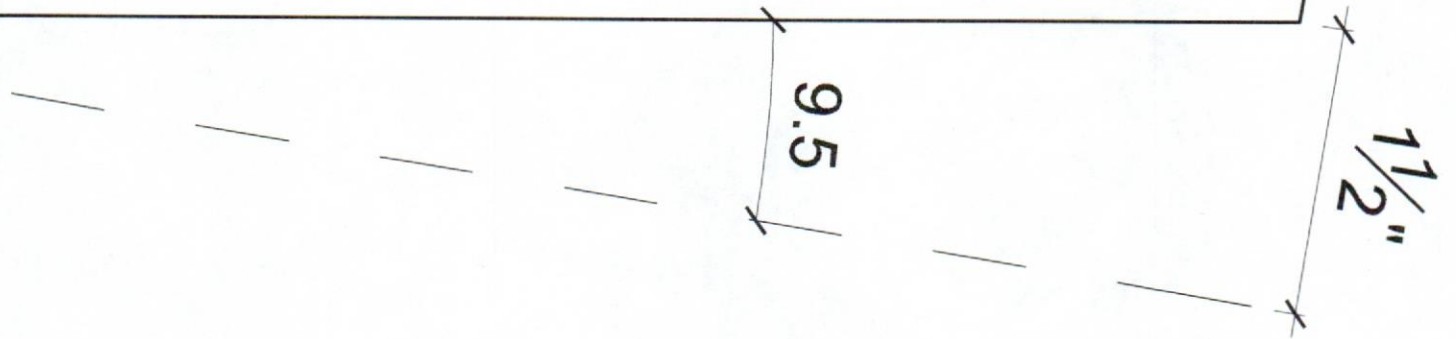
Rafter Ridge Fascia Cut **7.2**
Copyright 2014 Big Idea Designs. www.jcreatables.com

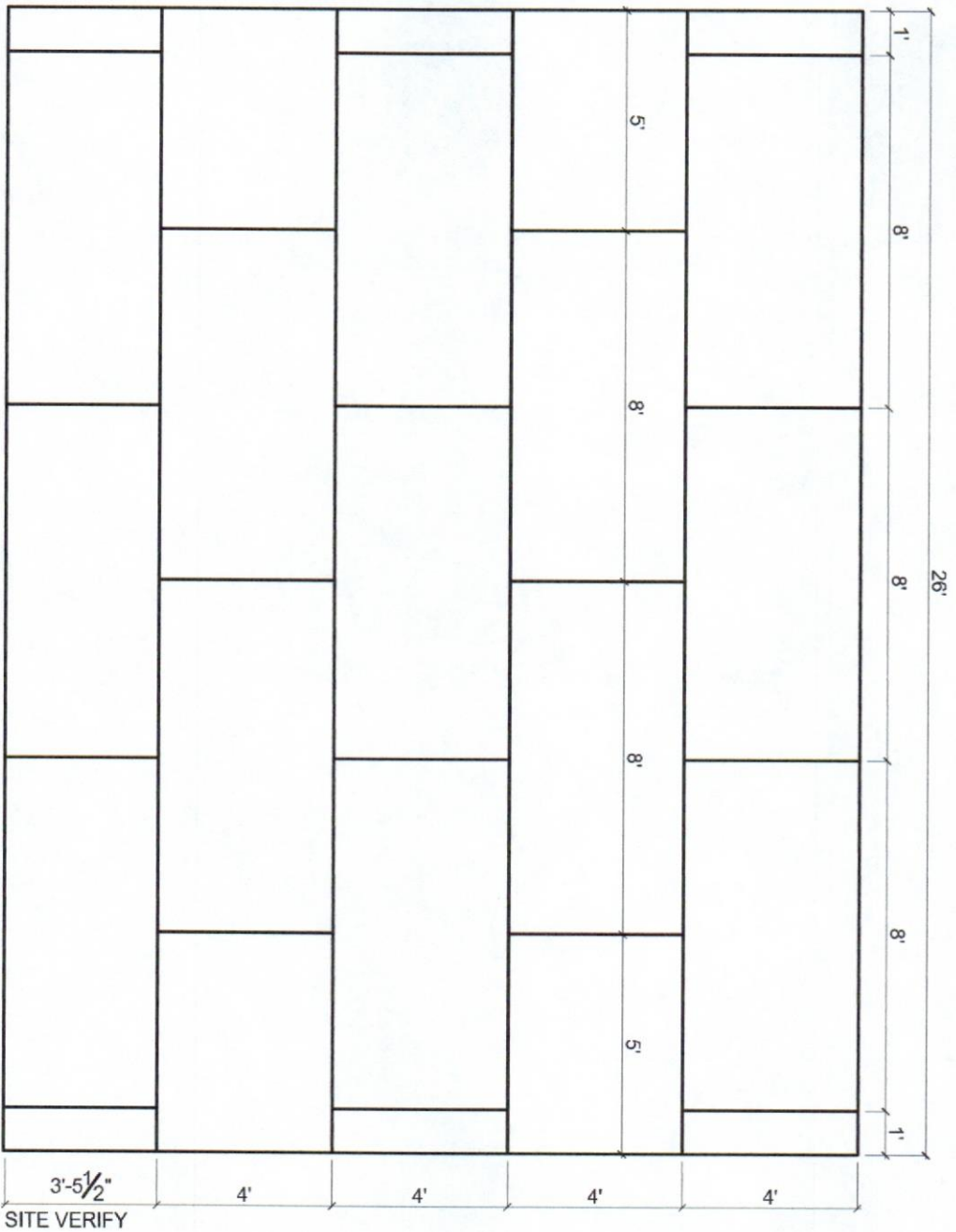


Rafter Birdsmonth Cut 7.3

Copyright 2014 Big Idea Designs. www.icreatables.com

R1 BOTTOM EVE - 2x10



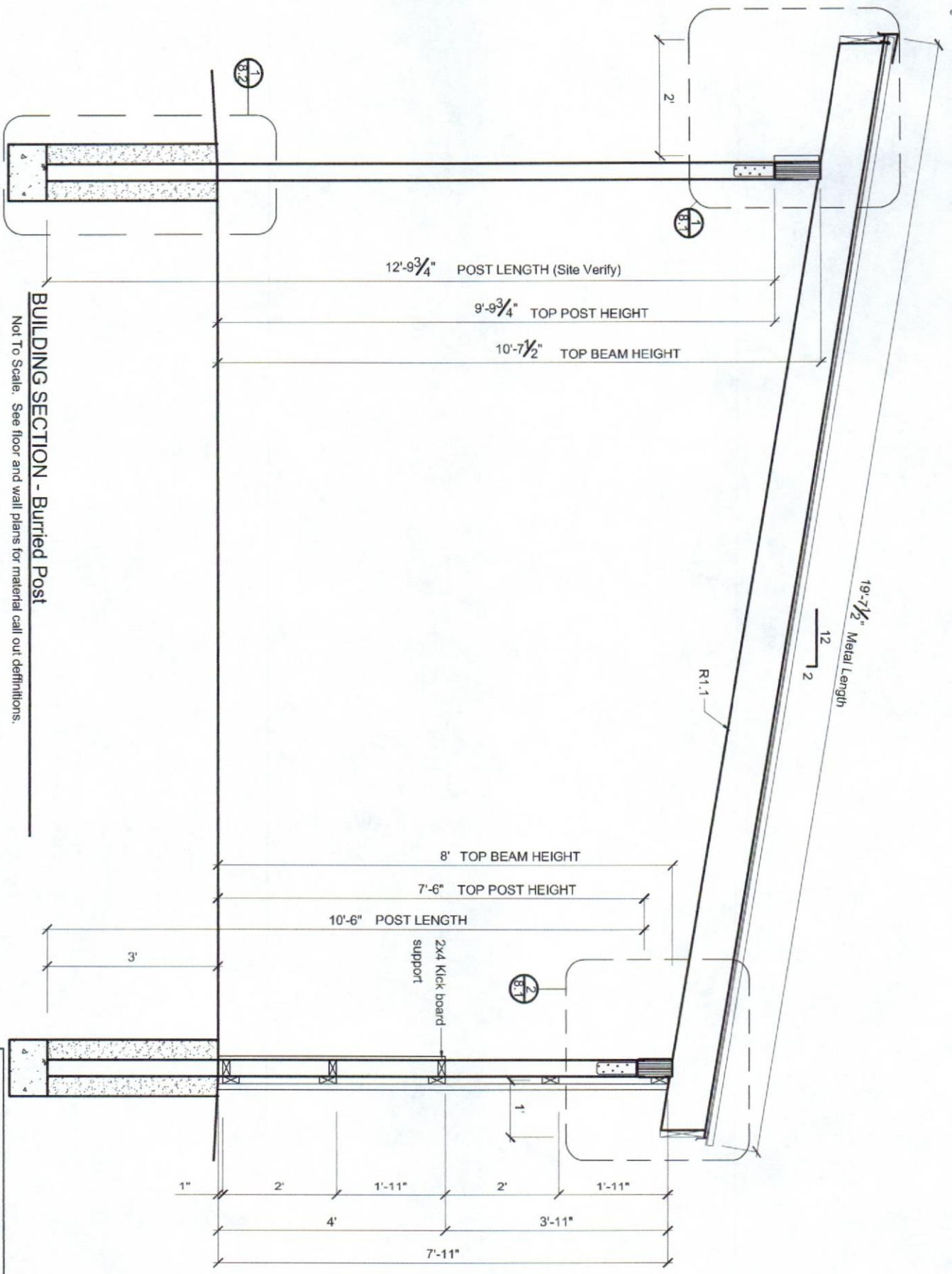


ROOF SHEETING PLAN

3'-5 1/2"
SITE VERIFY

Roof Sheeting Plan **7.5**

Copyright 2014 Big Idea Designs. www.icreatables.com



12'-9³/₄" POST LENGTH (Site Verify)

9'-9³/₄" TOP POST HEIGHT

10'-7¹/₂" TOP BEAM HEIGHT

19'-7¹/₂" Metal Length
12
2

R1.1

8' TOP BEAM HEIGHT

7'-6" TOP POST HEIGHT

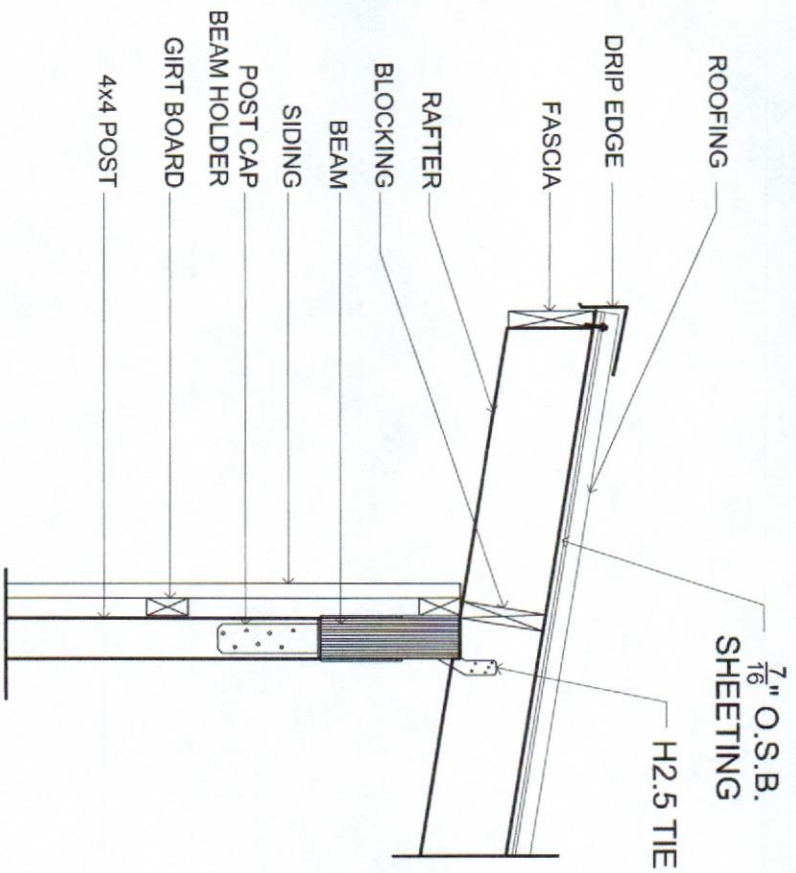
10'-6" POST LENGTH

2x4 Kick board
support

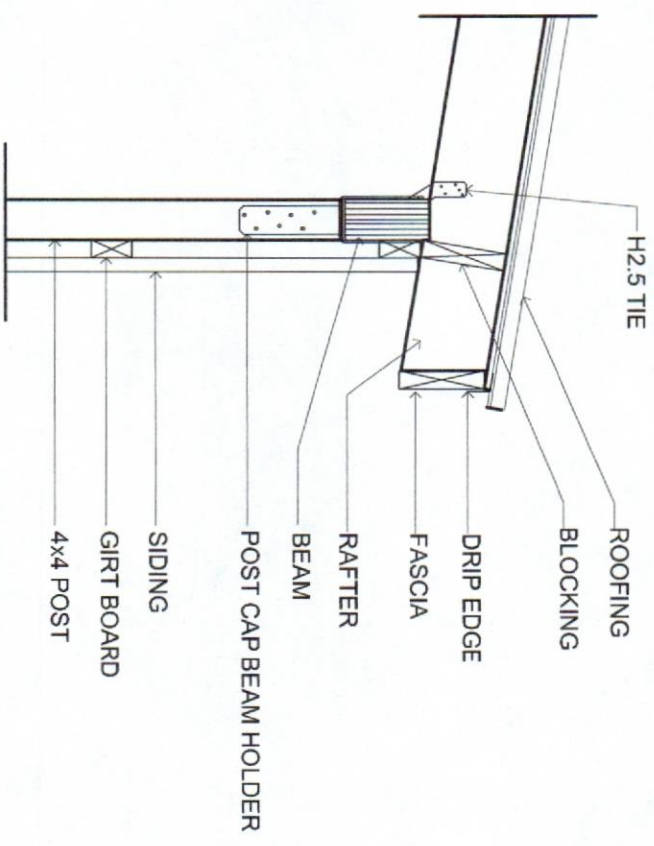
3'

1" 2' 1'-11" 2' 1'-11"
4' 3'-11"
7'-11"

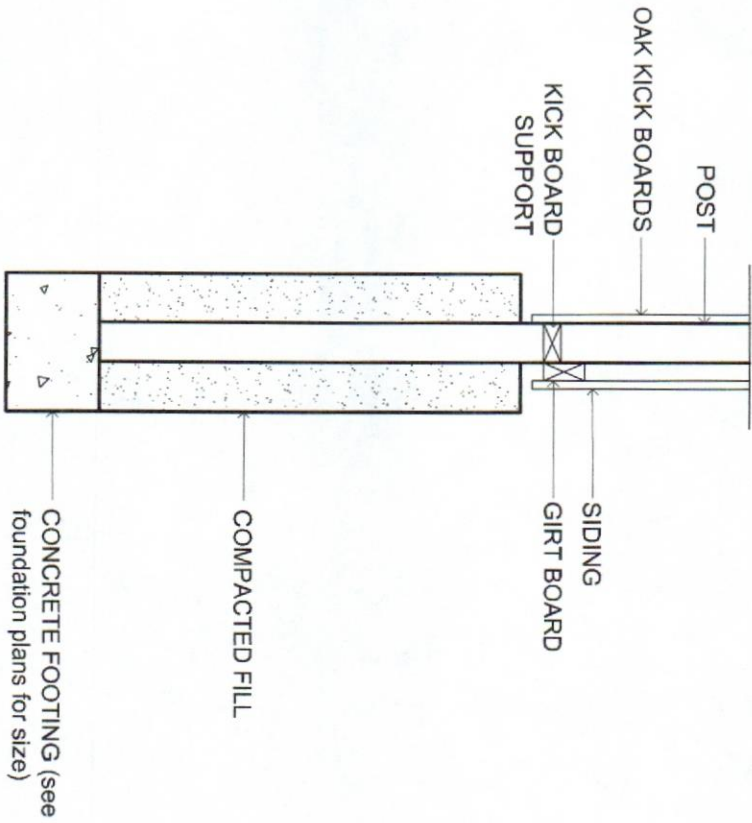
BUILDING SECTION - Buried Post
Not To Scale. See floor and wall plans for material call out definitions.



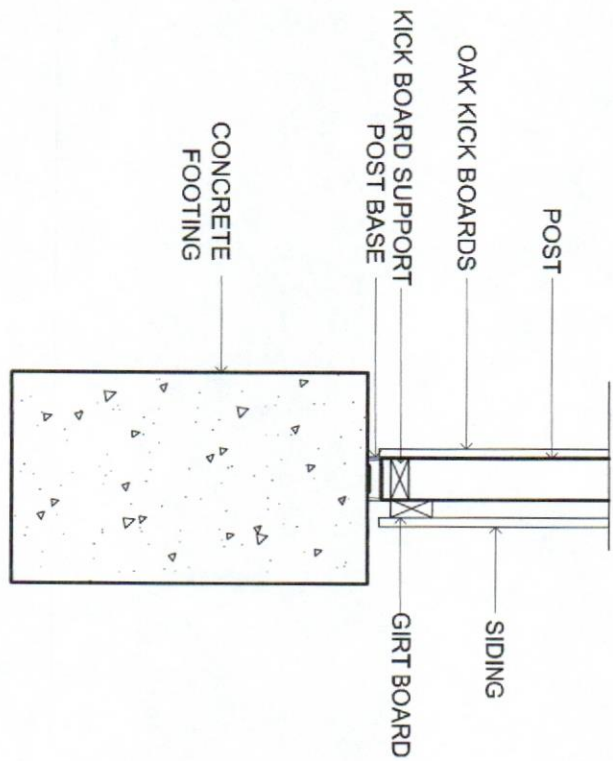
1 ROOF DETAIL - 12x Run In
 $\frac{3}{4}$ " = 1'-0"



2 ROOF DETAIL - 12x Run In
 $\frac{3}{4}$ " = 1'-0"

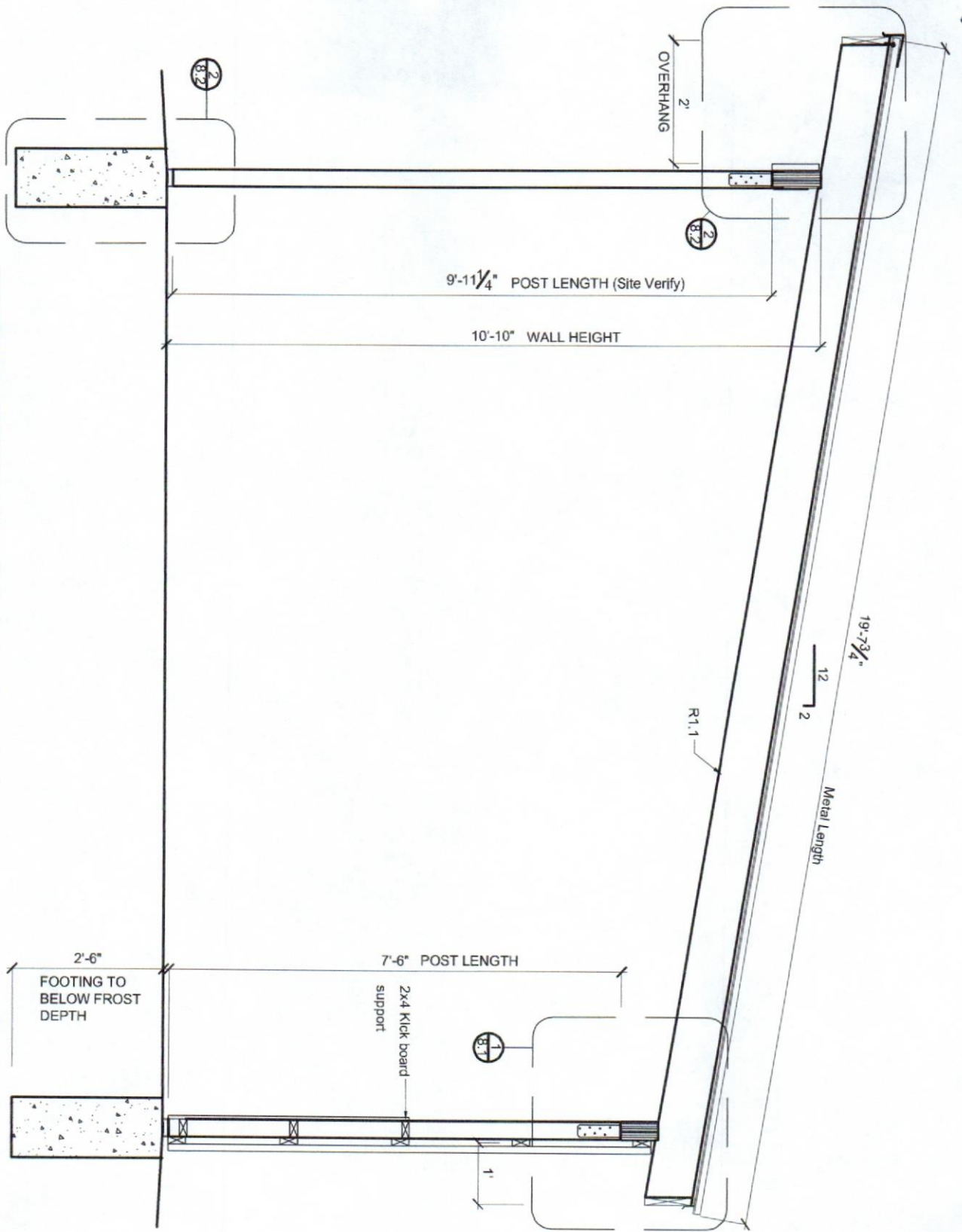


1 POST TO GROUND DETAIL
 $\frac{3}{4}" = 1'-0"$



2 POST TO GROUND DETAIL - CONCRETE FOOTING
 $\frac{3}{4}" = 1'-0"$

Section **8.2**



BUILDING SECTION - Concrete Foundation

Not To Scale. See floor and wall plans for material call out definitions.