

# "SAFE ROUTES TO SCHOOL"

## PROJECT #15991 FEDERAL PROJECT #X-A001(065) GRANITE STREET SIDEWALK CONSTRUCTION FROM RITE AID TO PARKWOOD DRIVE Allenstown, New Hampshire, Merrimack County

OCTOBER 7, 2014

REVISED: DECEMBER 1, 2014

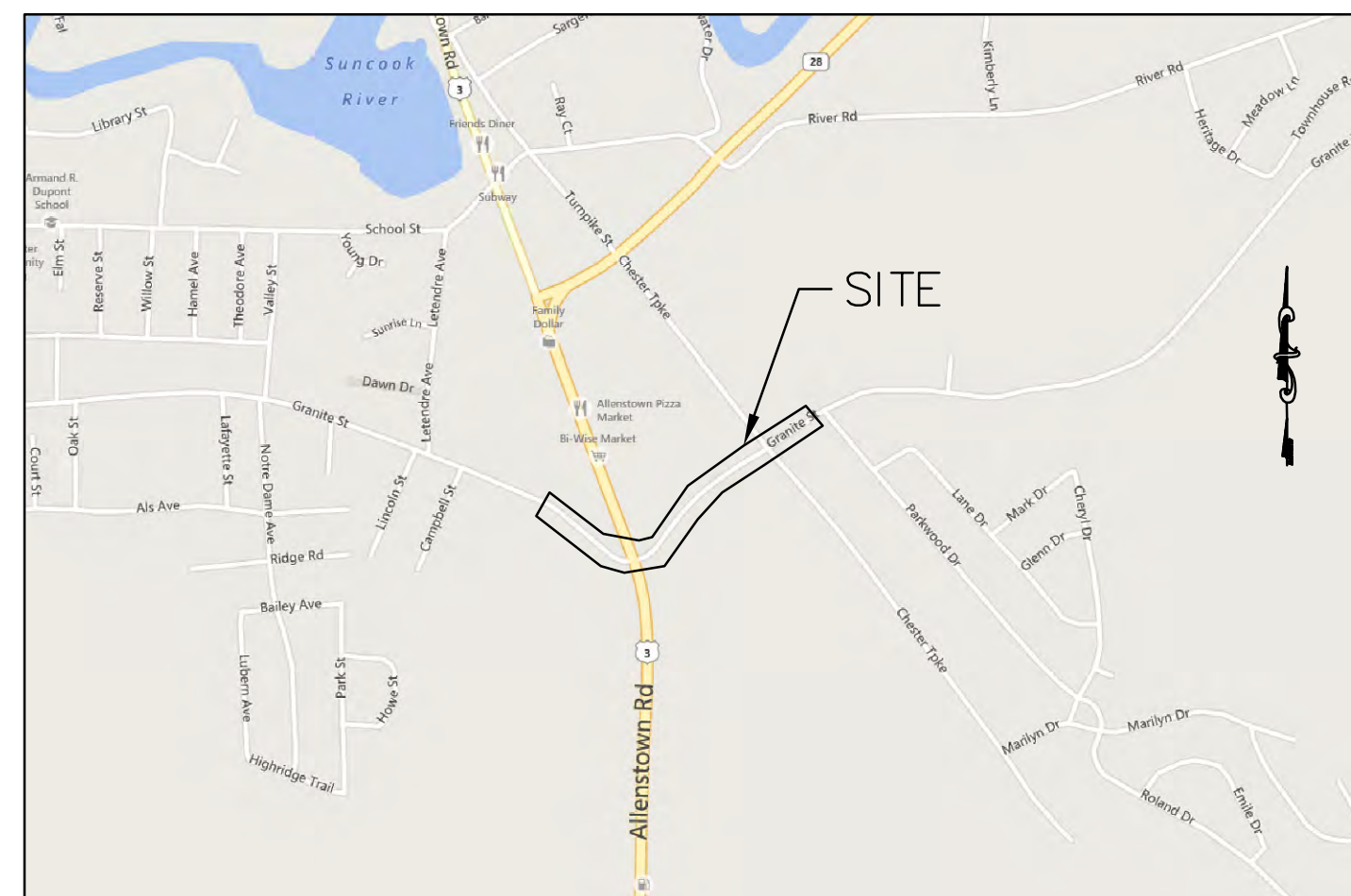
REVISED: JANUARY 26, 2015



Client: Town of Allenstown  
16 School Street  
Allenstown, NH 03275

Civil Engineer: Haight Engineering, PLLC  
181 Watson Road  
P.O. Box 1166  
Dover, NH 03820

Surveyor: David Vincent Land Surveying Services  
181 Watson Road  
Dover, NH 03820



Locus Map - Not To Scale

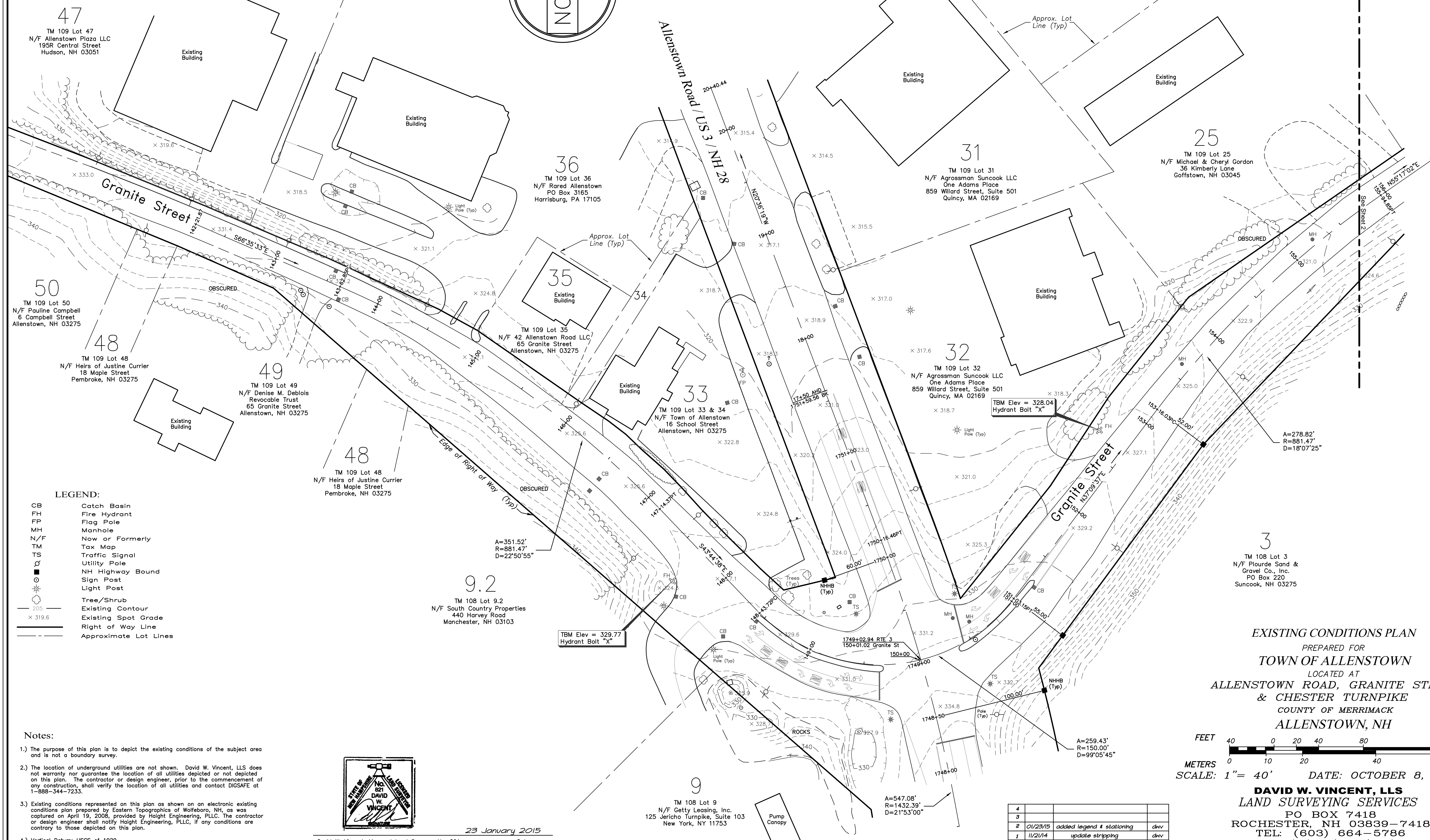
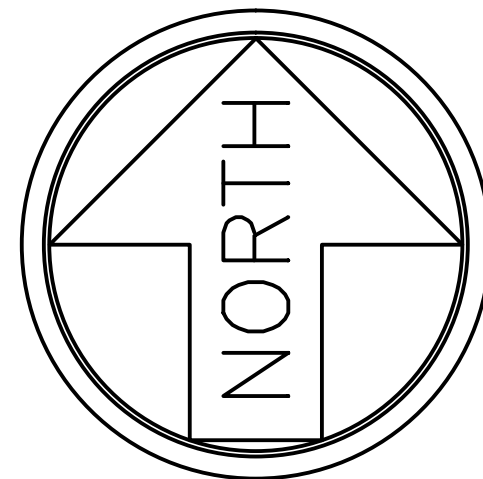
### INDEX

Existing Conditions  
Demolition Plan A, B & C  
Overall Site Plan  
Site Plan A, B & C  
Layout Plan A, B & C  
Intersection Plan  
Detail Sheet  
NHDOT Record: Signalization and Lighting Plan  
Cross Sections Along Granite Street

### SHEET NO.

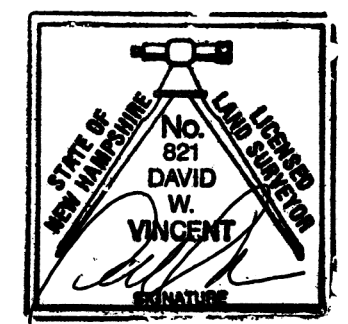
1, 2  
3, 4 & 5  
6  
7, 8 & 9  
10, 11 & 12  
13  
14,15  
16  
XS-1 & XS-2





- LEGEND:**
- CB Catch Basin
  - FH Fire Hydrant
  - FP Flag Pole
  - MH Manhole
  - N/F New or Formerly
  - TM Tax Map
  - TS Traffic Signal
  - U Utility Pole
  - NH Highway Bound
  - Sign Post
  - Light Post
  - Tree/Shrub
  - 205 Existing Contour
  - x 319.6 Existing Spot Grade
  - Right of Way Line
  - Approximate Lot Lines

- Notes:**
- The purpose of this plan is to depict the existing conditions of the subject area and is not a boundary survey.
  - The location of underground utilities are not shown. David W. Vincent, LLS does not warrant or guarantee the location of all utilities depicted or not depicted on this plan. The contractor or design engineer, prior to the commencement of any construction, shall verify the location of all utilities and contact DIGSAFE at 1-888-344-7233.
  - Existing conditions represented on this plan as shown on an electronic existing conditions plan prepared by Eastern Topographics of Wolfeboro, NH, as was captured on April 19, 2008, provided by Haight Engineering, PLLC. The contractor or design engineer shall notify Haight Engineering, PLLC, if any conditions are contrary to those depicted on this plan.
  - Vertical Datum: USGS of 1929.



David W. Vincent, Licensed Land Surveyor No. 821 Date 23 January 2015

**EXISTING CONDITIONS PLAN**  
 PREPARED FOR  
**TOWN OF ALLENSTOWN**  
 LOCATED AT  
**ALLENSTOWN ROAD, GRANITE STREET  
 & CHESTER TURNPIKE**  
 COUNTY OF MERRIMACK  
**ALLENSTOWN, NH**

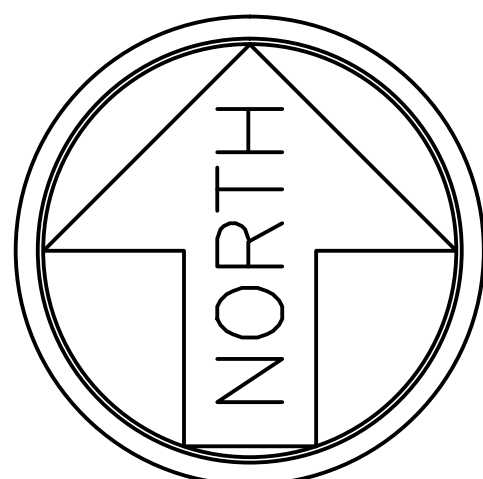
FEET 0 40 80 160  
 METERS 0 10 20 40 60  
 SCALE: 1" = 40' DATE: OCTOBER 8, 2014

**DAVID W. VINCENT, LLS**  
**LAND SURVEYING SERVICES**  
 PO BOX 7418  
 ROCHESTER, NH 03839-7418  
 TEL: (603) 664-5786  
 www.landsurveying.service.net

NO.	DATE	DESCRIPTION	BY
4			
3			
2	01/23/15	added legend & stationing	dvw
1	11/21/14	update striping	dvw

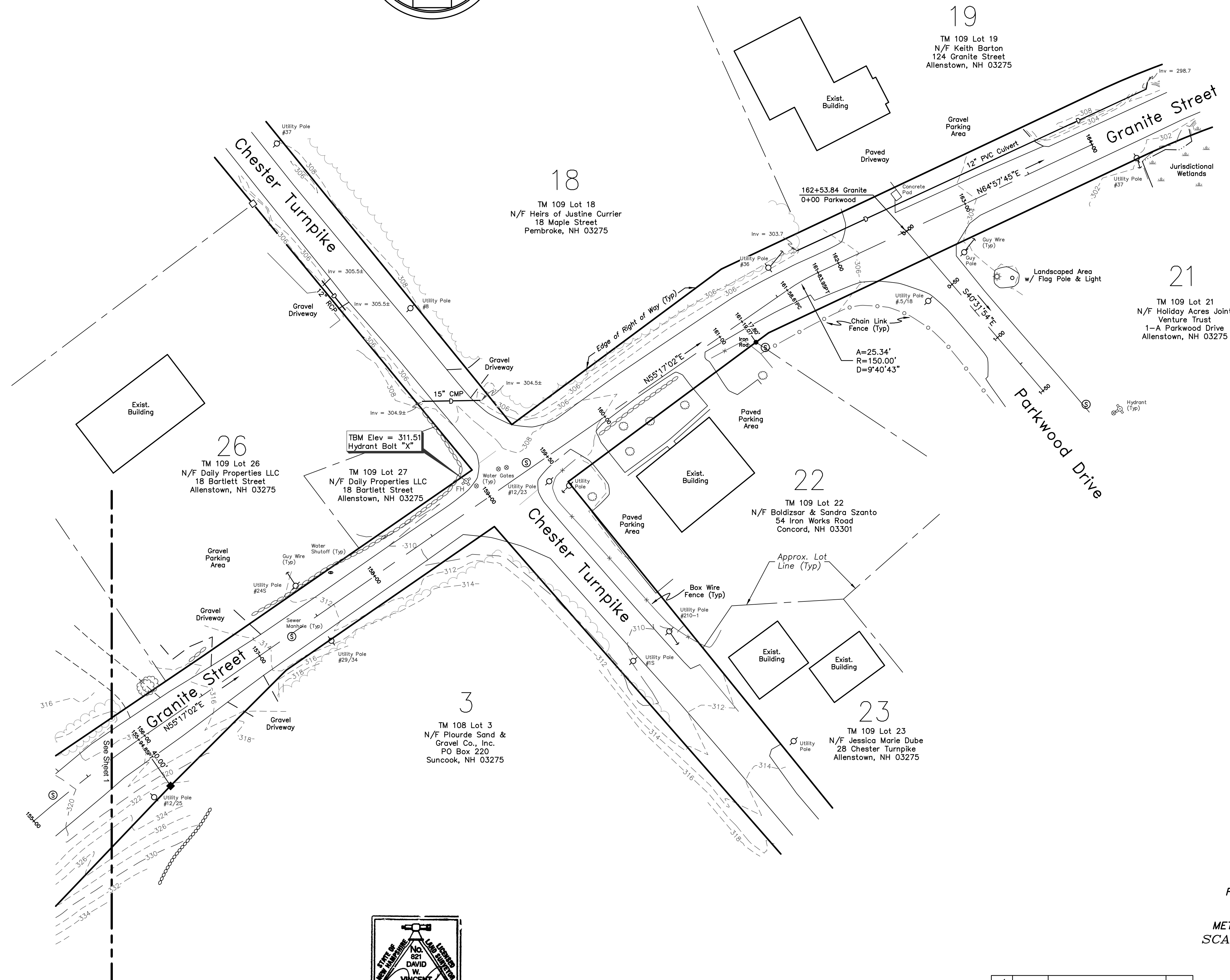
LEGEND:

- CB Catch Basin
- FH Fire Hydrant
- FP Flag Pole
- MH Manhole
- N/F Now or Formerly
- TM Tax Map
- TS Traffic Signal
- Utility Pole
- NH Highway Bound
- Sewer Manhole
- Water Gate
- Tree/Shrub
- Existing Contour
- Existing Spot Grade
- Right of Way Line
- Approximate Lot Lines

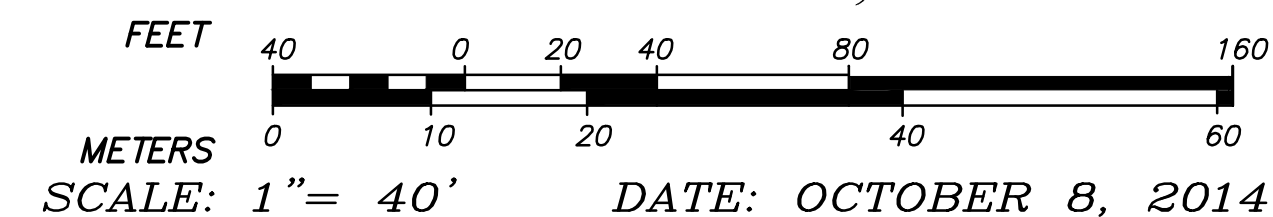


Notes:

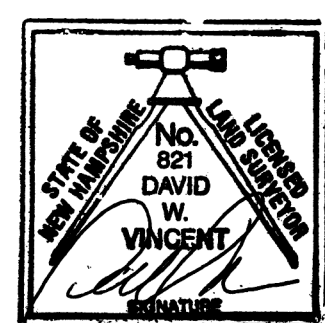
- 1.) The purpose of this plan is to depict the existing conditions of the subject area and is not a boundary survey.
- 2.) The location of underground utilities are not shown. David W. Vincent, LLS does not warrant or guarantee the location of all utilities depicted or not depicted on this plan. The contractor or design engineer, prior to the commencement of any construction, shall verify the location of all utilities and contact DIGSAFE at 1-888-344-7233 OR DIAL 811.
- 3.) Existing conditions represented on this plan as shown on an electronic existing conditions plan prepared by Eastern Topographics of Wolfeboro, NH, as was captured on April 19, 2008, provided by Hight Engineering, PLLC. The existing conditions shown between the southwest corner of Lot 26 and the entrance to Parkwood Drive was field located between April 10, 2014 and June 12, 2014. The contractor or design engineer shall notify Hight Engineering, PLLC, if any conditions are contrary to those depicted on this plan.
- 4.) Vertical Datum: USGS of 1929.



EXISTING CONDITIONS PLAN  
 PREPARED FOR  
 TOWN OF ALLENSTOWN  
 LOCATED AT  
 ALLENSTOWN ROAD, GRANITE STREET  
 & CHESTER TURNPIKE  
 COUNTY OF MERRIMACK  
 ALLENSTOWN, NH



**DAVID W. VINCENT, LLS**  
 LAND SURVEYING SERVICES  
 PO BOX 7418  
 ROCHESTER, NH 03839-7418  
 TEL: (603) 664-5786  
 www.landsurveying-service.net



23 January 2015  
 Date

David W. Vincent, Licensed Land Surveyor No. 821

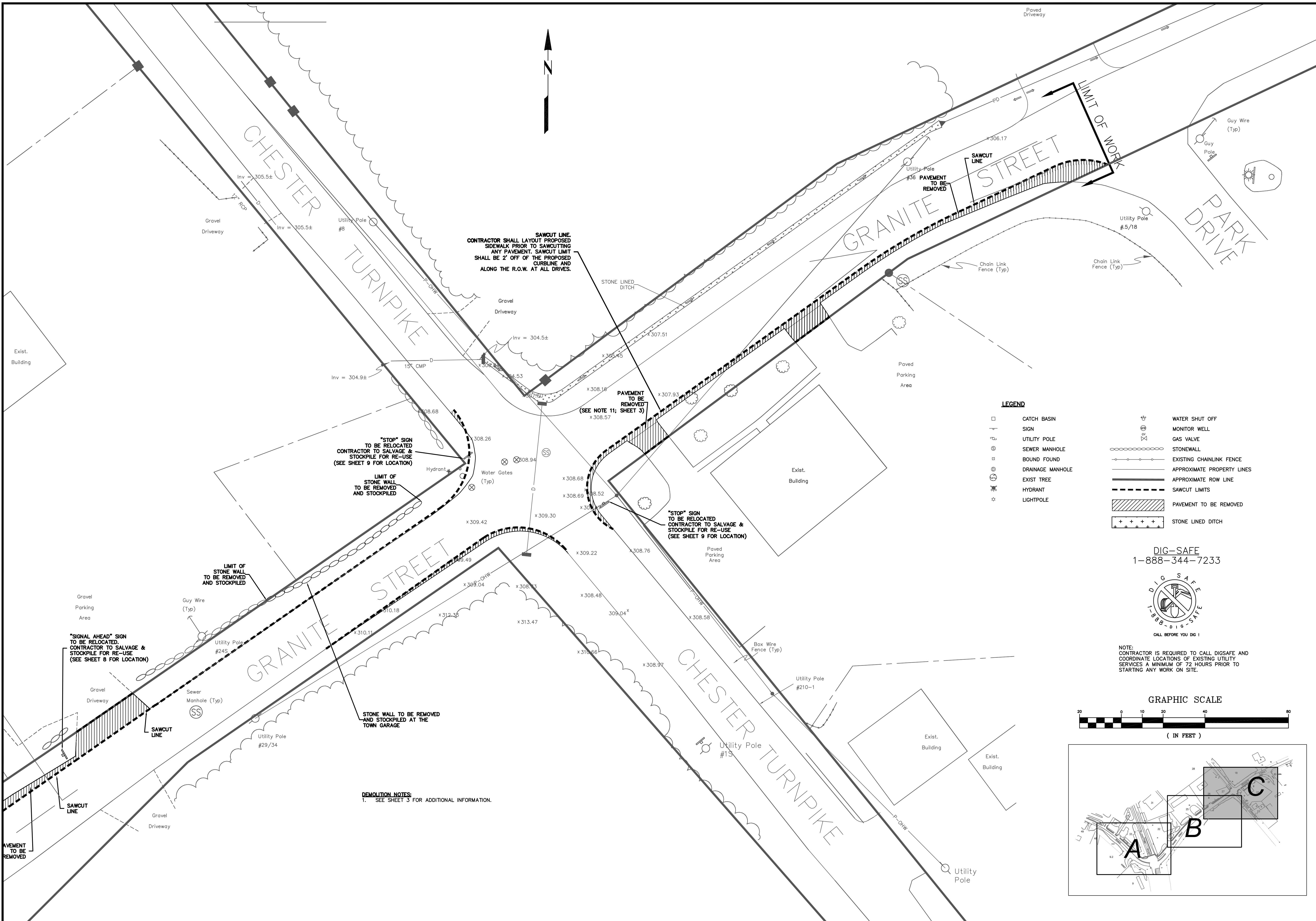
NO.	DATE	DESCRIPTION	BY
4			
3			
2	01/23/15	added legend & stationing	div
1	11/21/14	update stripping	div











**SAWCUT LINE.**  
 CONTRACTOR SHALL LAYOUT PROPOSED SIDEWALK PRIOR TO SAWCUTTING ANY PAVEMENT. SAWCUT LIMIT SHALL BE 2' OFF OF THE PROPOSED CURBLINE AND ALONG THE R.O.W. AT ALL DRIVES.

"STOP" SIGN TO BE RELOCATED. CONTRACTOR TO SALVAGE & STOCKPILE FOR RE-USE (SEE SHEET 9 FOR LOCATION)

"STOP" SIGN TO BE RELOCATED. CONTRACTOR TO SALVAGE & STOCKPILE FOR RE-USE (SEE SHEET 9 FOR LOCATION)

"SIGNAL AHEAD" SIGN TO BE RELOCATED. CONTRACTOR TO SALVAGE & STOCKPILE FOR RE-USE (SEE SHEET 8 FOR LOCATION)

STONE WALL TO BE REMOVED AND STOCKPILED AT THE TOWN GARAGE

**DEMOLITION NOTES**  
 1. SEE SHEET 3 FOR ADDITIONAL INFORMATION.

**LEGEND**

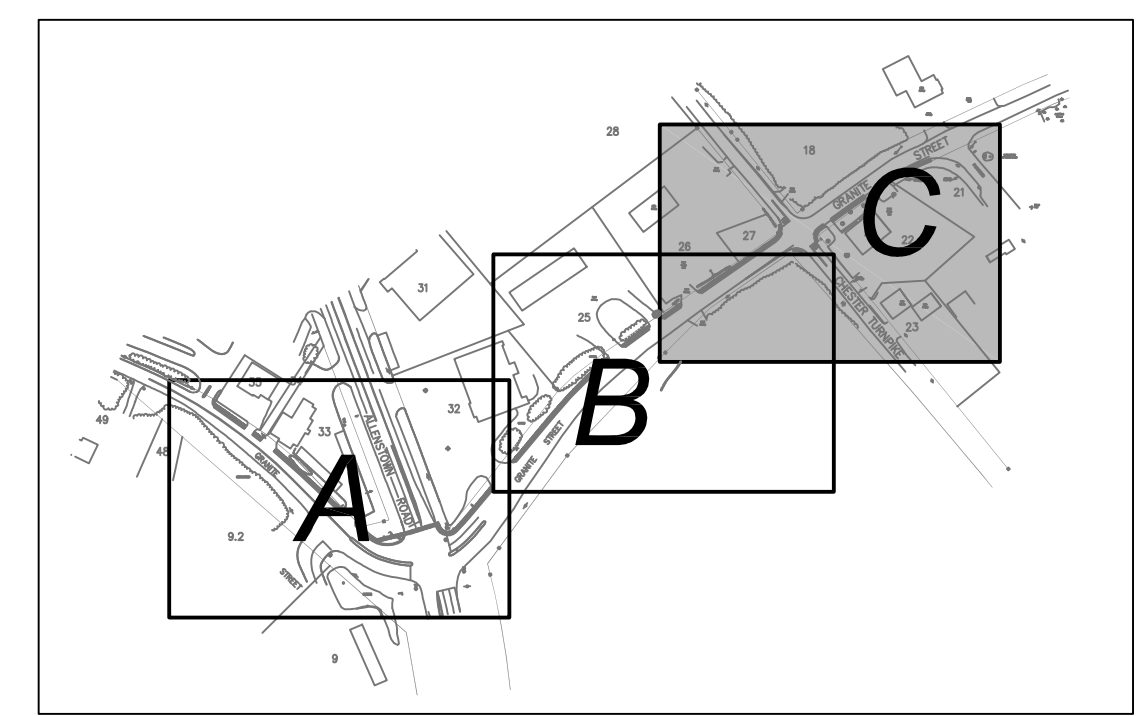
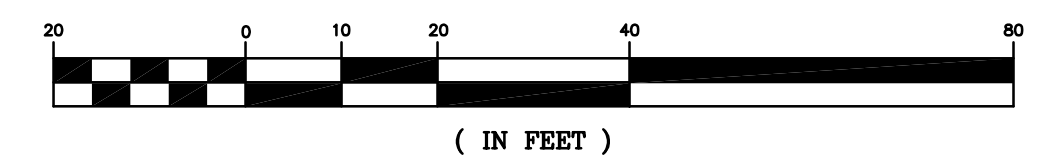
- CATCH BASIN
- ⊕ WATER SHUT OFF
- ⊕ SIGN
- ⊕ MONITOR WELL
- ⊕ UTILITY POLE
- ⊕ GAS VALVE
- ⊕ SEWER MANHOLE
- ⊕ STONEMAN
- ⊕ BOUND FOUND
- ⊕ EXISTING CHAINLINK FENCE
- ⊕ DRAINAGE MANHOLE
- ⊕ APPROXIMATE PROPERTY LINES
- ⊕ EXIST TREE
- ⊕ APPROXIMATE ROW LINE
- ⊕ HYDRANT
- ⊕ SAWCUT LIMITS
- ⊕ LIGHTPOLE
- ⊕ PAVEMENT TO BE REMOVED
- ⊕ STONE LINED DITCH

DIG-SAFE  
 1-888-344-7233



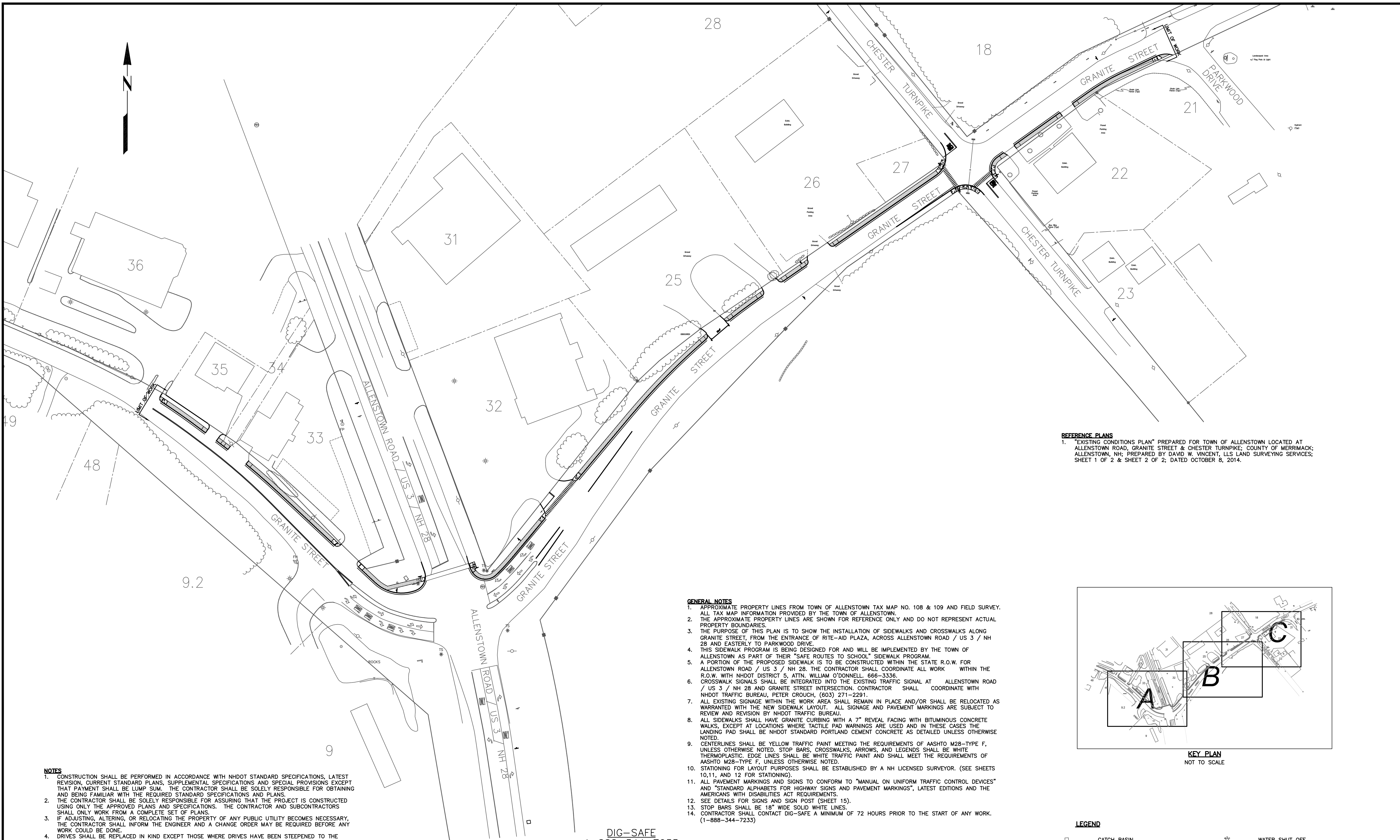
NOTE:  
 CONTRACTOR IS REQUIRED TO CALL DIGSAFE AND COORDINATE LOCATIONS OF EXISTING UTILITY SERVICES A MINIMUM OF 72 HOURS PRIOR TO STARTING ANY WORK ON SITE.

**GRAPHIC SCALE**



DATE: 10-7-14		NO.	REVISION
SCALE: 1"=20'	DRAWN BY: SRD	1	NO. 0928
DESIGN BY: SRD	APPROVED BY: SJH	2	NO. 0928
PROJECT NO. 0928	PROJECT NO. 0928	1	NO. 0928
FILE: SITE.DWG	FILE: SITE.DWG	1	NO. 0928
DATE: 1/26/2015	DATE: 12/1/2014	APP'D	DATE
HAIGHT ENGINEERING, PLLC CIVIL ENGINEERS P.O. BOX 1166, 681 WATSON ROAD FARMINGTON, NH 03825 603.750.4266 FAX 603.749.7948			
<b>TOWN OF ALLENSTOWN</b> <b>16 SCHOOL STREET</b> <b>ALLENSTOWN, NH 03275</b>			
<b>DEMOLITION PLAN - C</b>			
SRTS PROJECT #15891 FEDERAL PROJECT #X-4001(065) GRANITE STREET SIDEWALK CONSTRUCTION FROM RITE-AID TO PARKWOOD DRIVE ALLENSTOWN, NH 03275 MERRIMACK COUNTY			
<b>5</b>			





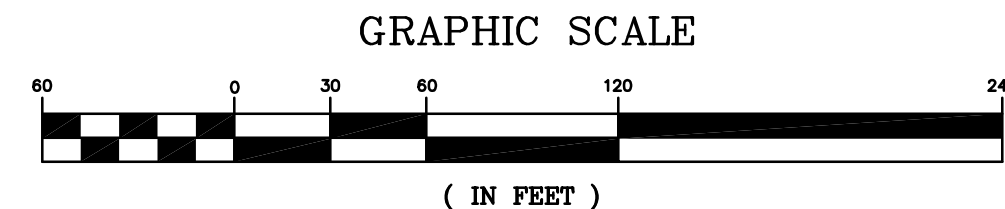
- NOTES**
- CONSTRUCTION SHALL BE PERFORMED IN ACCORDANCE WITH NHDOT STANDARD SPECIFICATIONS, LATEST REVISION, CURRENT STANDARD PLANS, SUPPLEMENTAL SPECIFICATIONS AND SPECIAL PROVISIONS EXCEPT THAT PAYMENT SHALL BE LUMP SUM. THE CONTRACTOR SHALL BE SOLELY RESPONSIBLE FOR OBTAINING AND BEING FAMILIAR WITH THE REQUIRED STANDARD SPECIFICATIONS AND PLANS.
  - THE CONTRACTOR SHALL BE SOLELY RESPONSIBLE FOR ASSURING THAT THE PROJECT IS CONSTRUCTED USING ONLY THE APPROVED PLANS AND SPECIFICATIONS. THE CONTRACTOR AND SUBCONTRACTORS SHALL ONLY WORK FROM A COMPLETE SET OF PLANS.
  - IF ADJUSTING, ALTERING, OR RELOCATING THE PROPERTY OF ANY PUBLIC UTILITY BECOMES NECESSARY, THE CONTRACTOR SHALL INFORM THE ENGINEER AND A CHANGE ORDER MAY BE REQUIRED BEFORE ANY WORK COULD BE DONE.
  - DRIVES SHALL BE REPLACED IN KIND EXCEPT THOSE WHERE DRIVES HAVE BEEN STEEPENED TO THE EXTENT THAT A MORE STABLE SURFACE IS WARRANTED. ALL GRAVEL DRIVES SHALL BE CONSTRUCTED WITH A 5' PAVED APRON ADJACENT TO THE SHOULDER.
  - THE CONTRACTOR SHALL ADJUST ALL CATCH BASINS, DROP INLETS AND FRAMES AND GRATES/COVERS AS NEEDED TO MATCH THE NEW PAVEMENT.
  - THE CONTRACTOR SHALL BE RESPONSIBLE FOR COORDINATING WITH THE ENGINEER TO GRADE THE SHOULDERS TO DRAIN. CURB LINE RUNOFF SHALL NOT BE ALLOWED TO PUDDLE OR RUN INTO DRIVEWAYS AND ONTO PRIVATE PROPERTY. A 2" PAVED LIP SHALL BE CONSTRUCTED ACROSS ALL DRIVES AT THE CURB LINE TO MAINTAIN RUNOFF FLOW IN THE ROADWAY.
  - ALL WORK ON THIS PROJECT UNLESS OTHERWISE SHOWN ON THE PLANS OR ORDERED BY THE TOWN SHALL BE CONSTRUCTED WITHIN THE EXISTING ROW.
  - NO EXISTING MONUMENTS, BOUNDS, BENCHMARKS OR OTHER MARKERS SHALL BE DISTURBED. RESTORATION OF DISTURBED ITEMS SHALL BE AT THE CONTRACTOR'S EXPENSE AND AT NO ADDITIONAL COST TO THE OWNER.
  - ALL PAVEMENT CUT LINES SHALL BE SAWCUT NEAT, CLEAN AND STRAIGHT. ALL VERTICAL, DIAGONAL AND/OR HORIZONTAL PAVED SURFACES SHALL RECEIVE A LIBERAL BITUMINOUS TACK COAT IMMEDIATELY BEFORE NEW HOT BITUMINOUS PAVEMENT IS PLACED.
  - ADJUST ALL CATCH BASIN FRAMES AND GRATES AND CURB BOXES ETC... TO FINISH GRADE AS REQUIRED.

**DIG-SAFE**  
1-888-344-7233



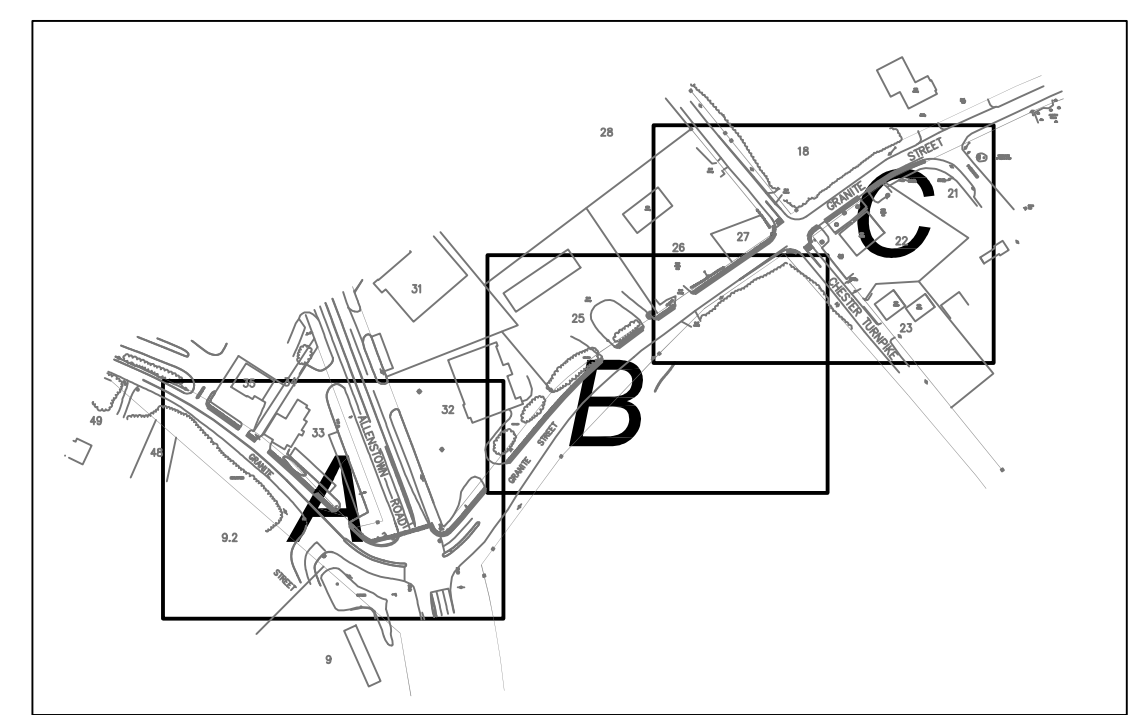
NOTE:  
CONTRACTOR IS REQUIRED TO CALL DIGSAFE AND COORDINATE LOCATIONS OF EXISTING UTILITY SERVICES A MINIMUM OF 72 HOURS PRIOR TO STARTING ANY WORK ON SITE.

- GENERAL NOTES**
- APPROXIMATE PROPERTY LINES FROM TOWN OF ALLENSTOWN TAX MAP NO. 108 & 109 AND FIELD SURVEY. ALL TAX MAP INFORMATION PROVIDED BY THE TOWN OF ALLENSTOWN.
  - THE APPROXIMATE PROPERTY LINES ARE SHOWN FOR REFERENCE ONLY AND DO NOT REPRESENT ACTUAL PROPERTY BOUNDARIES.
  - THE PURPOSE OF THIS PLAN IS TO SHOW THE INSTALLATION OF SIDEWALKS AND CROSSWALKS ALONG GRANITE STREET, FROM THE ENTRANCE OF RITE-AID PLAZA, ACROSS ALLENSTOWN ROAD / US 3 / NH 28 AND EASTERLY TO PARKWOOD DRIVE.
  - THIS SIDEWALK PROGRAM IS BEING DESIGNED FOR AND WILL BE IMPLEMENTED BY THE TOWN OF ALLENSTOWN AS PART OF THEIR "SAFE ROUTES TO SCHOOL" SIDEWALK PROGRAM.
  - A PORTION OF THE PROPOSED SIDEWALK IS TO BE CONSTRUCTED WITHIN THE STATE R.O.W. FOR ALLENSTOWN ROAD / US 3 / NH 28. THE CONTRACTOR SHALL COORDINATE ALL WORK WITHIN THE R.O.W. WITH NHDOT DISTRICT 5, ATTN. WILLIAM O'DONNELL, 666-3336.
  - CROSSWALK SIGNALS SHALL BE INTEGRATED INTO THE EXISTING TRAFFIC SIGNAL AT ALLENSTOWN ROAD / US 3 / NH 28 AND GRANITE STREET INTERSECTION. CONTRACTOR SHALL COORDINATE WITH NHDOT TRAFFIC BUREAU, PETER CROUCH, (603) 271-2291.
  - ALL EXISTING SIGNAGE WITHIN THE WORK AREA SHALL REMAIN IN PLACE AND/OR SHALL BE RELOCATED AS WARRANTED WITH THE NEW SIDEWALK LAYOUT. ALL SIGNAGE AND PAVEMENT MARKINGS ARE SUBJECT TO REVIEW AND REVISION BY NHDOT TRAFFIC BUREAU.
  - ALL SIDEWALKS SHALL HAVE GRANITE CURBING WITH A 7" REVEAL FACING WITH BITUMINOUS CONCRETE WALKS, EXCEPT AT LOCATIONS WHERE TACTILE PAD WARNINGS ARE USED AND IN THESE CASES THE LANDING PAD SHALL BE NHDOT STANDARD PORTLAND CEMENT CONCRETE AS DETAILED UNLESS OTHERWISE NOTED.
  - CENTERLINES SHALL BE YELLOW TRAFFIC PAINT MEETING THE REQUIREMENTS OF AASHTO M28-TYPE F, UNLESS OTHERWISE NOTED. STOP BARS, CROSSWALKS, ARROWS, AND LEGENDS SHALL BE WHITE THERMOPLASTIC. EDGE LINES SHALL BE WHITE TRAFFIC PAINT AND SHALL MEET THE REQUIREMENTS OF AASHTO M28-TYPE F, UNLESS OTHERWISE NOTED.
  - STATIONING FOR LAYOUT PURPOSES SHALL BE ESTABLISHED BY A NH LICENSED SURVEYOR. (SEE SHEETS 10,11, AND 12 FOR STATIONING).
  - ALL PAVEMENT MARKINGS AND SIGNS TO CONFORM TO "MANUAL ON UNIFORM TRAFFIC CONTROL DEVICES" AND "STANDARD ALPHABETS FOR HIGHWAY SIGNS AND PAVEMENT MARKINGS", LATEST EDITIONS AND THE AMERICANS WITH DISABILITIES ACT REQUIREMENTS.
  - SEE DETAILS FOR SIGNS AND SIGN POST (SHEET 15).
  - STOP BARS SHALL BE 18" WIDE SOLID WHITE LINES.
  - CONTRACTOR SHALL CONTACT DIG-SAFE A MINIMUM OF 72 HOURS PRIOR TO THE START OF ANY WORK. (1-888-344-7233)



**REFERENCE PLANS**

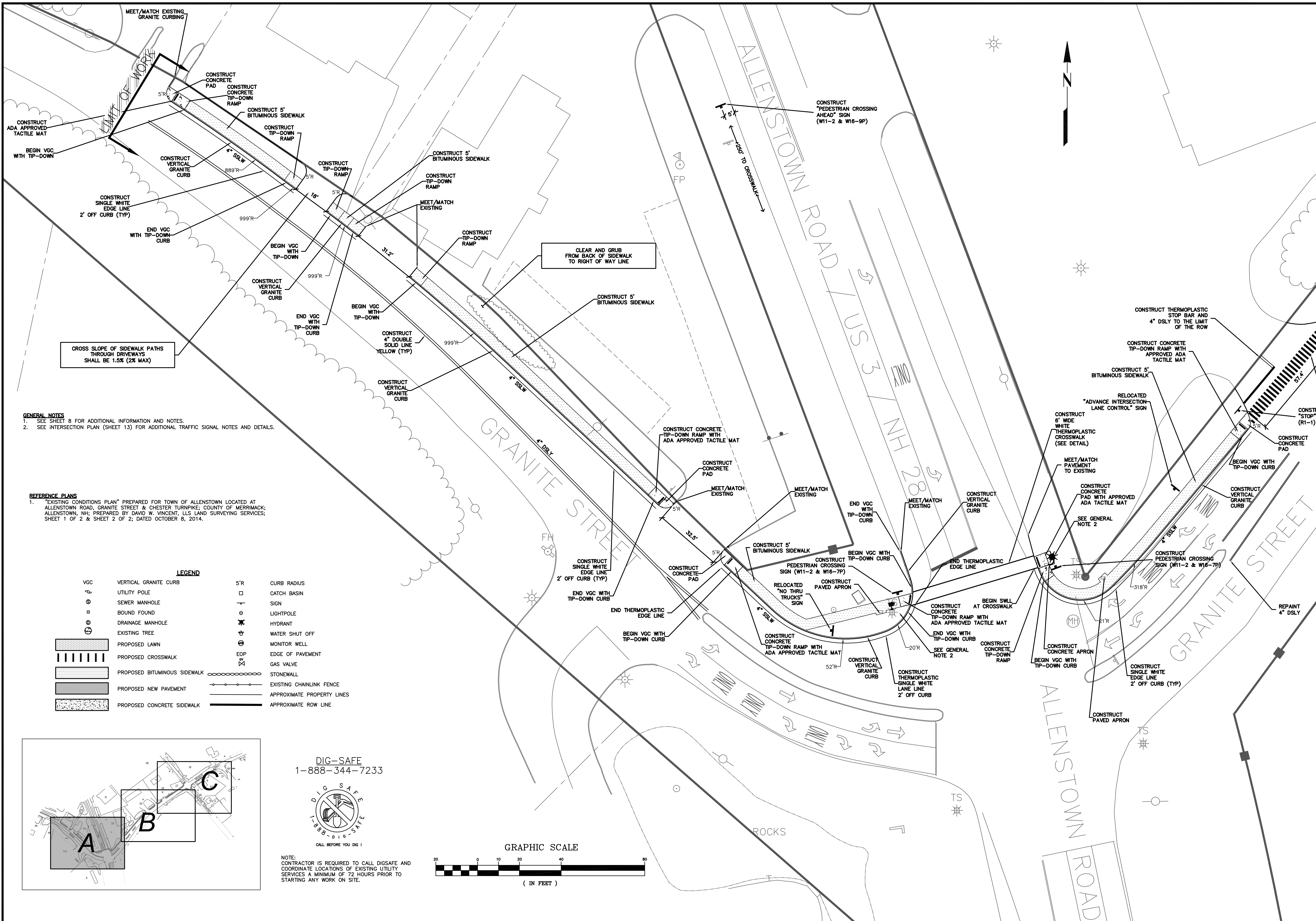
- EXISTING CONDITIONS PLAN\* PREPARED FOR TOWN OF ALLENSTOWN LOCATED AT ALLENSTOWN ROAD, GRANITE STREET & CHESTER TURNPIKE, COUNTY OF MERRIMACK, ALLENSTOWN, NH; PREPARED BY DAVID W. VINCENT, LLS LAND SURVEYING SERVICES; SHEET 1 OF 2 & SHEET 2 OF 2; DATED OCTOBER 8, 2014.



- LEGEND**
- CATCH BASIN
  - ⊕ SIGN
  - ⊕ UTILITY POLE
  - ⊕ SEWER MANHOLE
  - ⊕ BOUND FOUND
  - ⊕ DRAINAGE MANHOLE
  - ⊕ EXISTING TREE
  - ⊕ HYDRANT
  - ⊕ LIGHTPOLE
  - ⊕ WATER SHUT OFF
  - ⊕ MONITOR WELL
  - ⊕ GAS VALVE
  - ⊕ STONEWALL
  - ⊕ EXISTING CHAINLINK FENCE
  - ⊕ APPROXIMATE PROPERTY LINES

DATE: 10-7-14		NO.	REVISION
SCALE: 1"=60'	DRAWN BY: SRD	NO. 1	APP'D
DESIGN BY: SRD	PROJECT NO: 0928	NO. 2	REVISION
APPROVED BY: SJH	PROJECT NO: 0928	NO. 1	REVISION
PROJECT NO: 0928	PROJECT NO: 0928	NO. 1	REVISION
FILE: SITE.DWG	DATE: 12/1/2014	NO.	REVISION
DATE: 10-7-14		NO.	REVISION
SCALE: 1"=60'		NO.	REVISION
DESIGN BY: SRD		NO.	REVISION
APPROVED BY: SJH		NO.	REVISION
PROJECT NO: 0928		NO.	REVISION
FILE: SITE.DWG		NO.	REVISION
DATE: 12/1/2014		NO.	REVISION
PROJECT NO: 0928		NO.	REVISION
FILE: SITE.DWG		NO.	REVISION
DATE: 10-7-14		NO.	REVISION
SCALE: 1"=60'		NO.	REVISION
DESIGN BY: SRD		NO.	REVISION
APPROVED BY: SJH		NO.	REVISION
PROJECT NO: 0928		NO.	REVISION
FILE: SITE.DWG		NO.	REVISION
DATE: 12/1/2014		NO.	REVISION
PROJECT NO: 0928		NO.	REVISION
FILE: SITE.DWG		NO.	REVISION
DATE: 10-7-14		NO.	REVISION
SCALE: 1"=60'		NO.	REVISION
DESIGN BY: SRD		NO.	REVISION
APPROVED BY: SJH		NO.	REVISION
PROJECT NO: 0928		NO.	REVISION
FILE: SITE.DWG		NO.	REVISION
DATE: 12/1/2014		NO.	REVISION
PROJECT NO: 0928		NO.	REVISION
FILE: SITE.DWG		NO.	REVISION
DATE: 10-7-14		NO.	REVISION
SCALE: 1"=60'		NO.	REVISION
DESIGN BY: SRD		NO.	REVISION
APPROVED BY: SJH		NO.	REVISION
PROJECT NO: 0928		NO.	REVISION
FILE: SITE.DWG		NO.	REVISION
DATE: 12/1/2014		NO.	REVISION
PROJECT NO: 0928		NO.	REVISION
FILE: SITE.DWG		NO.	REVISION
DATE: 10-7-14		NO.	REVISION
SCALE: 1"=60'		NO.	REVISION
DESIGN BY: SRD		NO.	REVISION
APPROVED BY: SJH		NO.	REVISION
PROJECT NO: 0928		NO.	REVISION
FILE: SITE.DWG		NO.	REVISION
DATE: 12/1/2014		NO.	REVISION
PROJECT NO: 0928		NO.	REVISION
FILE: SITE.DWG		NO.	REVISION
DATE: 10-7-14		NO.	REVISION
SCALE: 1"=60'		NO.	REVISION
DESIGN BY: SRD		NO.	REVISION
APPROVED BY: SJH		NO.	REVISION
PROJECT NO: 0928		NO.	REVISION
FILE: SITE.DWG		NO.	REVISION
DATE: 12/1/2014		NO.	REVISION
PROJECT NO: 0928		NO.	REVISION
FILE: SITE.DWG		NO.	REVISION
DATE: 10-7-14		NO.	REVISION
SCALE: 1"=60'		NO.	REVISION
DESIGN BY: SRD		NO.	REVISION
APPROVED BY: SJH		NO.	REVISION
PROJECT NO: 0928		NO.	REVISION
FILE: SITE.DWG		NO.	REVISION
DATE: 12/1/2014		NO.	REVISION
PROJECT NO: 0928		NO.	REVISION
FILE: SITE.DWG		NO.	REVISION
DATE: 10-7-14		NO.	REVISION
SCALE: 1"=60'		NO.	REVISION
DESIGN BY: SRD		NO.	REVISION
APPROVED BY: SJH		NO.	REVISION
PROJECT NO: 0928		NO.	REVISION
FILE: SITE.DWG		NO.	REVISION
DATE: 12/1/2014		NO.	REVISION
PROJECT NO: 0928		NO.	REVISION
FILE: SITE.DWG		NO.	REVISION
DATE: 10-7-14		NO.	REVISION
SCALE: 1"=60'		NO.	REVISION
DESIGN BY: SRD		NO.	REVISION
APPROVED BY: SJH		NO.	REVISION
PROJECT NO: 0928		NO.	REVISION
FILE: SITE.DWG		NO.	REVISION
DATE: 12/1/2014		NO.	REVISION
PROJECT NO: 0928		NO.	REVISION
FILE: SITE.DWG		NO.	REVISION
DATE: 10-7-14		NO.	REVISION
SCALE: 1"=60'		NO.	REVISION
DESIGN BY: SRD		NO.	REVISION
APPROVED BY: SJH		NO.	REVISION
PROJECT NO: 0928		NO.	REVISION
FILE: SITE.DWG		NO.	REVISION
DATE: 12/1/2014		NO.	REVISION
PROJECT NO: 0928		NO.	REVISION
FILE: SITE.DWG		NO.	REVISION
DATE: 10-7-14		NO.	REVISION
SCALE: 1"=60'		NO.	REVISION
DESIGN BY: SRD		NO.	REVISION
APPROVED BY: SJH		NO.	REVISION
PROJECT NO: 0928		NO.	REVISION
FILE: SITE.DWG		NO.	REVISION
DATE: 12/1/2014		NO.	REVISION
PROJECT NO: 0928		NO.	REVISION
FILE: SITE.DWG		NO.	REVISION
DATE: 10-7-14		NO.	REVISION
SCALE: 1"=60'		NO.	REVISION
DESIGN BY: SRD		NO.	REVISION
APPROVED BY: SJH		NO.	REVISION
PROJECT NO: 0928		NO.	REVISION
FILE: SITE.DWG		NO.	REVISION
DATE: 12/1/2014		NO.	REVISION
PROJECT NO: 0928		NO.	REVISION
FILE: SITE.DWG		NO.	REVISION
DATE: 10-7-14		NO.	REVISION
SCALE: 1"=60'		NO.	REVISION
DESIGN BY: SRD		NO.	REVISION
APPROVED BY: SJH		NO.	REVISION
PROJECT NO: 0928		NO.	REVISION
FILE: SITE.DWG		NO.	REVISION
DATE: 12/1/2014		NO.	REVISION
PROJECT NO: 0928		NO.	REVISION
FILE: SITE.DWG		NO.	REVISION
DATE: 10-7-14		NO.	REVISION
SCALE: 1"=60'		NO.	REVISION
DESIGN BY: SRD		NO.	REVISION
APPROVED BY: SJH		NO.	REVISION
PROJECT NO: 0928		NO.	REVISION
FILE: SITE.DWG		NO.	REVISION
DATE: 12/1/2014		NO.	REVISION
PROJECT NO: 0928		NO.	REVISION
FILE: SITE.DWG		NO.	REVISION
DATE: 10-7-14		NO.	REVISION
SCALE: 1"=60'		NO.	REVISION
DESIGN BY: SRD		NO.	REVISION
APPROVED BY: SJH		NO.	REVISION
PROJECT NO: 0928		NO.	REVISION
FILE: SITE.DWG		NO.	REVISION
DATE: 12/1/2014		NO.	REVISION
PROJECT NO: 0928		NO.	REVISION
FILE: SITE.DWG		NO.	REVISION
DATE: 10-7-14		NO.	REVISION
SCALE: 1"=60'		NO.	REVISION
DESIGN BY: SRD		NO.	REVISION
APPROVED BY: SJH		NO.	REVISION
PROJECT NO: 0928		NO.	REVISION
FILE: SITE.DWG		NO.	REVISION
DATE: 12/1/2014		NO.	REVISION
PROJECT NO: 0928		NO.	REVISION
FILE: SITE.DWG		NO.	REVISION
DATE: 10-7-14		NO.	REVISION
SCALE: 1"=60'		NO.	REVISION
DESIGN BY: SRD		NO.	REVISION
APPROVED BY: SJH		NO.	REVISION
PROJECT NO: 0928		NO.	REVISION
FILE: SITE.DWG		NO.	REVISION
DATE: 12/1/2014		NO.	REVISION
PROJECT NO: 0928		NO.	REVISION
FILE: SITE.DWG		NO.	REVISION
DATE: 10-7-14		NO.	REVISION
SCALE: 1"=60'		NO.	REVISION
DESIGN BY: SRD		NO.	REVISION
APPROVED BY: SJH		NO.	REVISION
PROJECT NO: 0928		NO.	REVISION
FILE: SITE.DWG		NO.	REVISION
DATE: 12/1/2014		NO.	REVISION
PROJECT NO: 0928		NO.	REVISION
FILE: SITE.DWG		NO.	REVISION
DATE: 10-7-14		NO.	REVISION
SCALE: 1"=60'		NO.	REVISION
DESIGN BY: SRD		NO.	REVISION
APPROVED BY: SJH		NO.	REVISION
PROJECT NO: 0928		NO.	REVISION
FILE: SITE.DWG		NO.	REVISION
DATE: 12/1/2014		NO.	REVISION
PROJECT NO: 0928		NO.	REVISION
FILE: SITE.DWG		NO.	REVISION
DATE: 10-7-14		NO.	REVISION
SCALE: 1"=60'		NO.	REVISION
DESIGN BY: SRD		NO.	REVISION
APPROVED BY: SJH		NO.	REVISION
PROJECT NO: 0928		NO.	REVISION
FILE: SITE.DWG		NO.	REVISION
DATE: 12/1/2014		NO.	REVISION
PROJECT NO: 0928		NO.	REVISION
FILE: SITE.DWG		NO.	REVISION
DATE: 10-7-14		NO.	REVISION
SCALE: 1"=60'		NO.	REVISION
DESIGN BY: SRD		NO.	REVISION
APPROVED BY: SJH		NO.	REVISION
PROJECT NO: 0928		NO.	REVISION
FILE: SITE.DWG		NO.	REVISION
DATE: 12/1/2014		NO.	REVISION
PROJECT NO: 0928		NO.	REVISION
FILE: SITE.DWG		NO.	REVISION
DATE: 10-7-14		NO.	REVISION
SCALE: 1"=60'		NO.	REVISION
DESIGN BY: SRD		NO.	REVISION
APPROVED BY: SJH		NO.	REVISION
PROJECT NO: 0928		NO.	REVISION
FILE: SITE.DWG		NO.	REVISION
DATE: 12/1/2014		NO.	REVISION
PROJECT NO: 0928		NO.	REVISION
FILE: SITE.DWG		NO.	REVISION
DATE: 10-7-14		NO.	REVISION
SCALE: 1"=60'		NO.	REVISION
DESIGN BY: SRD		NO.	REVISION
APPROVED BY: SJH		NO.	REVISION
PROJECT NO: 0928		NO.	REVISION
FILE: SITE.DWG		NO.	REVISION
DATE: 12/1/2014		NO.	REVISION
PROJECT NO: 0928		NO.	REVISION
FILE: SITE.DWG		NO.	REVISION
DATE: 10-7-14		NO.	REVISION
SCALE: 1"=60'		NO.	REVISION
DESIGN BY: SRD		NO.	REVISION
APPROVED BY: SJH		NO.	REVISION
PROJECT NO: 0928		NO.	REVISION
FILE: SITE.DWG		NO.	REVISION
DATE: 12/1/2014		NO.	REVISION
PROJECT NO: 0928		NO.	REVISION
FILE: SITE.DWG		NO.	REVISION
DATE: 10-7-14		NO.	REVISION
SCALE: 1"=60'		NO.	REVISION
DESIGN BY: SRD		NO.	REVISION
APPROVED BY: SJH		NO.	REVISION
PROJECT NO: 0928		NO.	REVISION
FILE: SITE.DWG		NO.	REVISION
DATE: 12/1/2014		NO.	REVISION
PROJECT NO: 0928		NO.	REVISION
FILE: SITE.DWG		NO.	REVISION
DATE: 10-7-14		NO.	REVISION
SCALE: 1"=60'		NO.	REVISION
DESIGN BY: SRD		NO.	REVISION
APPROVED BY: SJH		NO.	REVISION
PROJECT NO: 0928		NO.	REVISION
FILE: SITE.DWG		NO.	REVISION
DATE: 12/1/2014		NO.	REVISION
PROJECT NO: 0928		NO.	REVISION
FILE: SITE.DWG		NO.	REVISION
DATE: 10-7-14		NO.	REVISION
SCALE: 1"=60'		NO.	REVISION
DESIGN BY: SRD		NO.	REVISION
APPROVED BY: SJH		NO.	REVISION
PROJECT NO: 0928		NO.	REVISION
FILE: SITE.DWG		NO.	REVISION
DATE: 12/1/2014		NO.	REVISION
PROJECT NO: 0928		NO.	REVISION
FILE: SITE.DWG		NO.	REVISION
DATE: 10-7-14		NO.	REVISION
SCALE: 1"=60'		NO.	REVISION
DESIGN BY: SRD		NO.	REVISION
APPROVED BY: SJH		NO.	REVISION
PROJECT NO: 0928		NO.	REVISION
FILE: SITE.DWG			

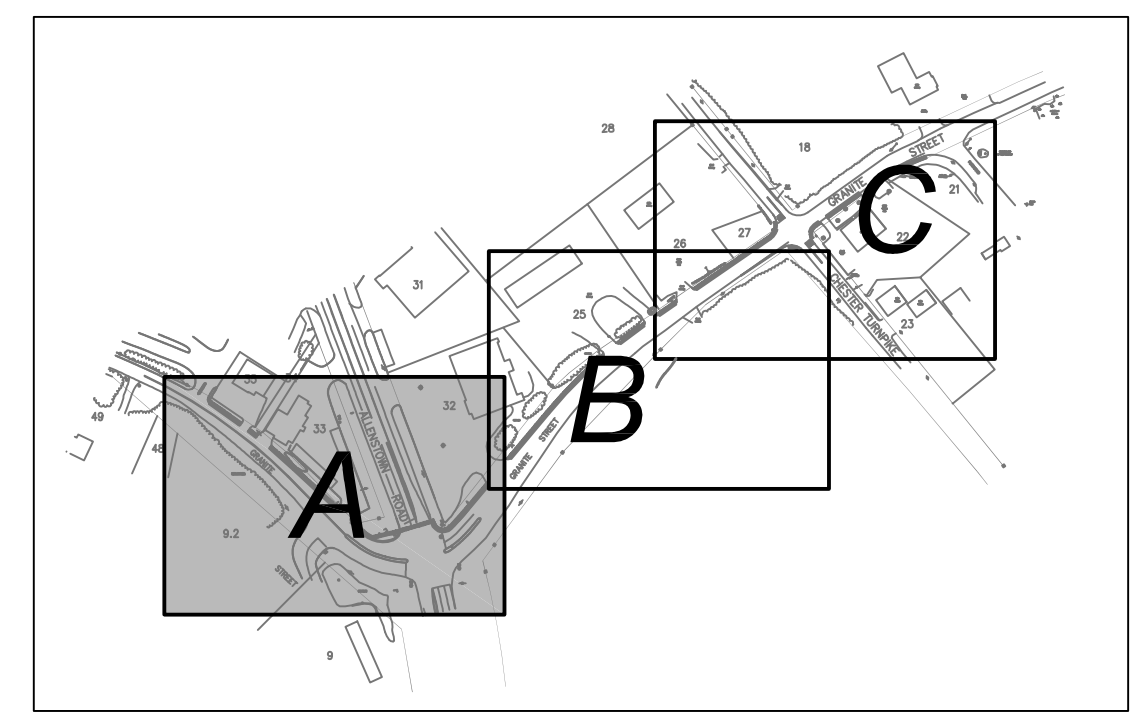




**GENERAL NOTES**  
 1. SEE SHEET 8 FOR ADDITIONAL INFORMATION AND NOTES.  
 2. SEE INTERSECTION PLAN (SHEET 13) FOR ADDITIONAL TRAFFIC SIGNAL NOTES AND DETAILS.

**REFERENCE PLANS**  
 1. "EXISTING CONDITIONS PLAN" PREPARED FOR TOWN OF ALLENSTOWN LOCATED AT ALLENSTOWN ROAD, GRANITE STREET & CHESTER TURNPIKE, COUNTY OF MERRIMACK, ALLENSTOWN, NH; PREPARED BY DAVID W. VINCENT, ILS LAND SURVEYING SERVICES; SHEET 1 OF 2 & SHEET 2 OF 2; DATED OCTOBER 8, 2014.

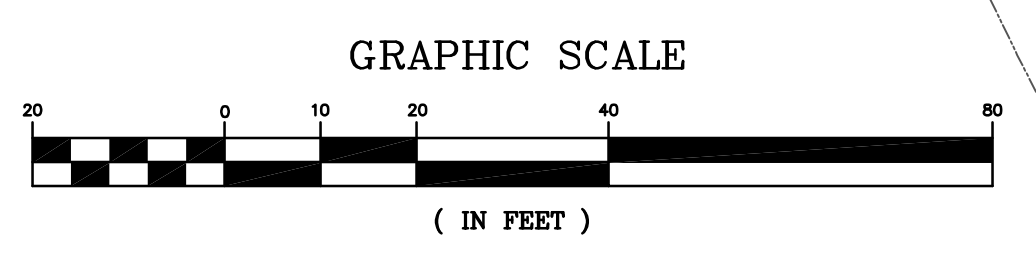
LEGEND			
VGC	VERTICAL GRANITE CURB	5'R	CURB RADIUS
⊙	UTILITY POLE	□	CATCH BASIN
⊙	SEWER MANHOLE	+	SIGN
⊙	BOUND FOUND	⊙	LIGHTPOLE
⊙	DRAINAGE MANHOLE	⊙	HYDRANT
⊙	EXISTING TREE	⊙	WATER SHUT OFF
	PROPOSED LAWN	⊙	MONITOR WELL
	PROPOSED CROSSWALK	EOP	EDGE OF PAVEMENT
	PROPOSED BITUMINOUS SIDEWALK	⊙	GAS VALVE
	PROPOSED NEW PAVEMENT	⊙	STONEWALL
	PROPOSED CONCRETE SIDEWALK	⊙	EXISTING CHAINLINK FENCE
		---	APPROXIMATE PROPERTY LINES
		---	APPROXIMATE ROW LINE



DIG-SAFE  
 1-888-344-7233



NOTE:  
 CONTRACTOR IS REQUIRED TO CALL DIGSAFE AND COORDINATE LOCATIONS OF EXISTING UTILITY SERVICES A MINIMUM OF 72 HOURS PRIOR TO STARTING ANY WORK ON SITE.

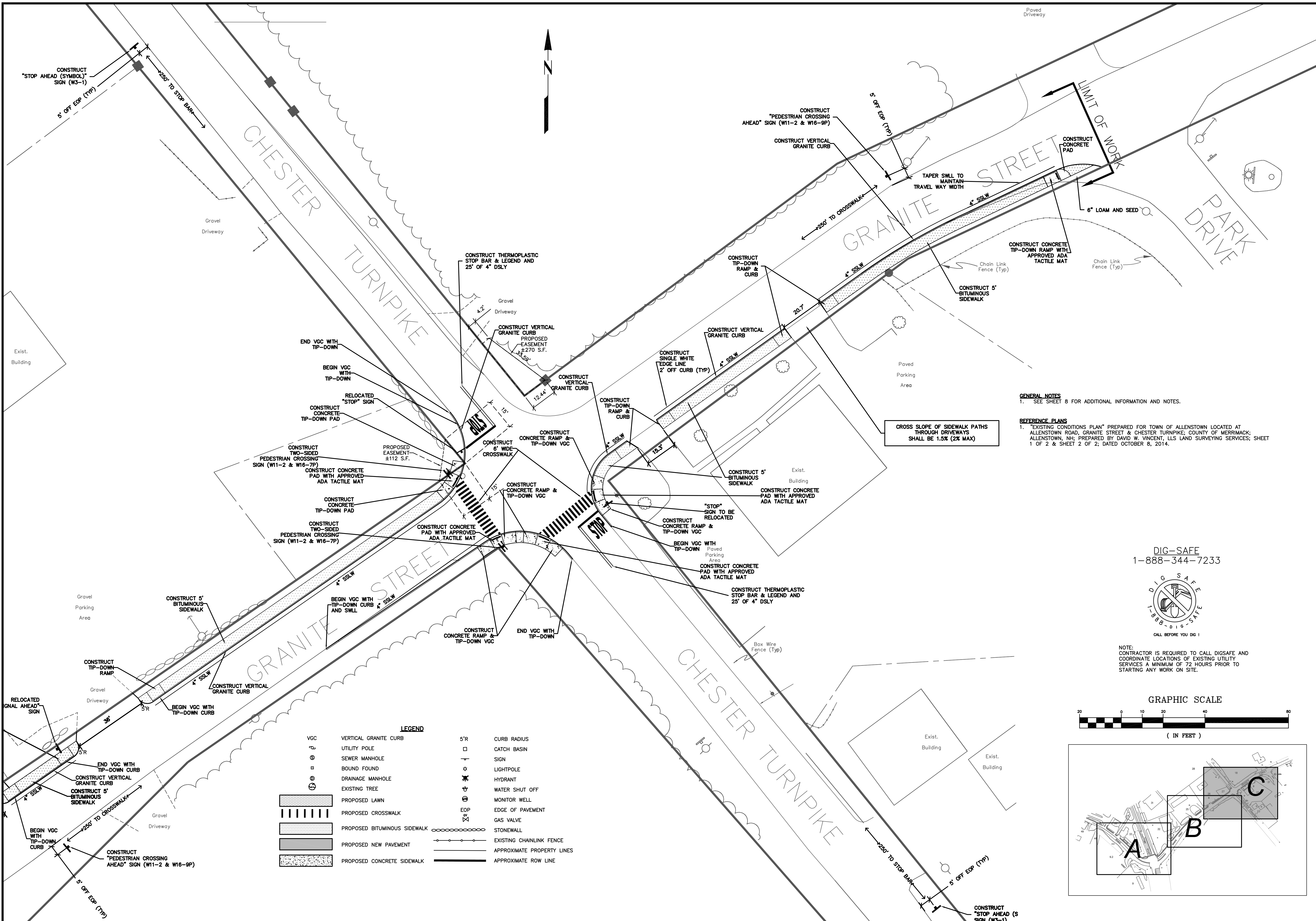


HAIGHT ENGINEERING, PLLC CIVIL ENGINEERS P.O. BOX 1166, 681 WATSON ROAD ALLENSTOWN, NH 03275 603.750.4266 FAX 603.749.7948	
DATE	10-7-14
SCALE	1"=20'
DRAWN BY	SRD
DESIGN BY	SRD
APPROVED BY	SJH
PROJECT NO.	0928
FILE	SITE.DWG
NO.	1
REVISION	
APP'D	KMT
DATE	12/1/2014
COMMENTS	FINAL DESIGN REVIEW
NO.	2
REVISION	NH07 PRIMARY DESIGN
NO.	1
REVISION	
TOWN OF ALLENSTOWN 16 SCHOOL STREET ALLENSTOWN, NH 03275	
SRTS PROJECT #15891 FEDERAL PROJECT #X-4001(065) GRANITE STREET SIDEWALK CONSTRUCTION FROM RITE-AID TO PARKWOOD DRIVE ALLENSTOWN, NH 03275 MERRIMACK COUNTY	
SITE PLAN - A	
7	









**LEGEND**

VGC	VERTICAL GRANITE CURB	5'R	CURB RADIUS
⊙	UTILITY POLE	□	CATCH BASIN
⊙	SEWER MANHOLE	⊙	SIGN
⊙	BOUND FOUND	⊙	LIGHTPOLE
⊙	DRAINAGE MANHOLE	⊙	HYDRANT
⊙	EXISTING TREE	⊙	WATER SHUT OFF
▨	PROPOSED LAWN	⊙	MONITOR WELL
▨	PROPOSED CROSSWALK	⊙	EDGE OF PAVEMENT
▨	PROPOSED BITUMINOUS SIDEWALK	⊙	GAS VALVE
▨	PROPOSED NEW PAVEMENT	⊙	STONEWALL
▨	PROPOSED CONCRETE SIDEWALK	⊙	EXISTING CHAINLINK FENCE
		⊙	APPROXIMATE PROPERTY LINES
		⊙	APPROXIMATE ROW LINE

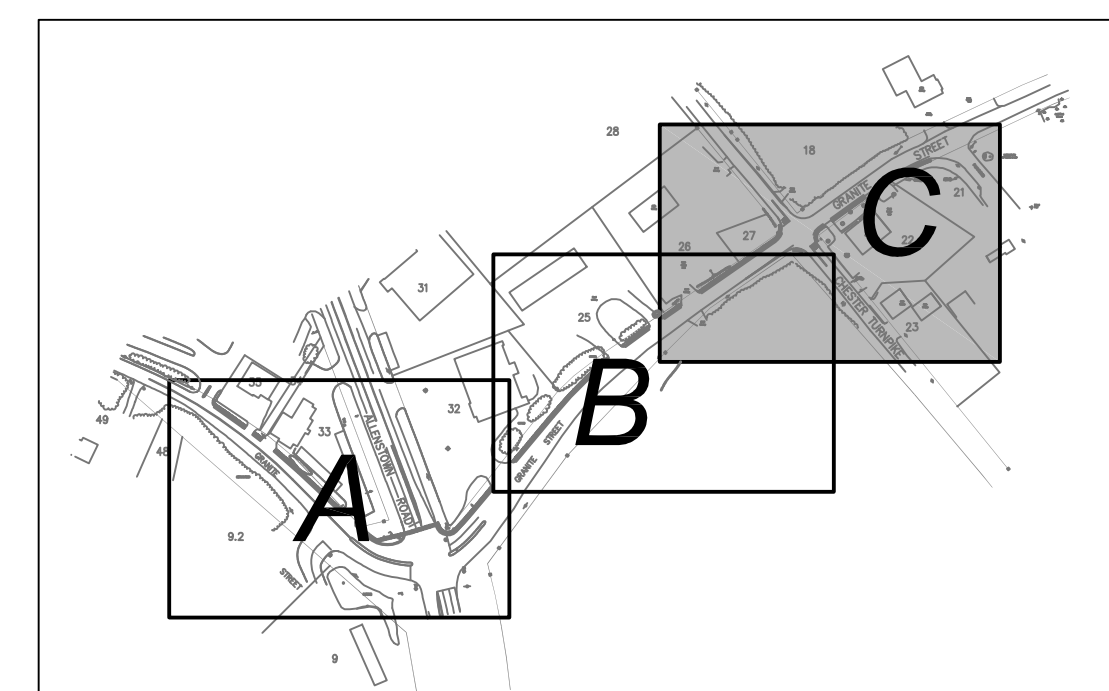
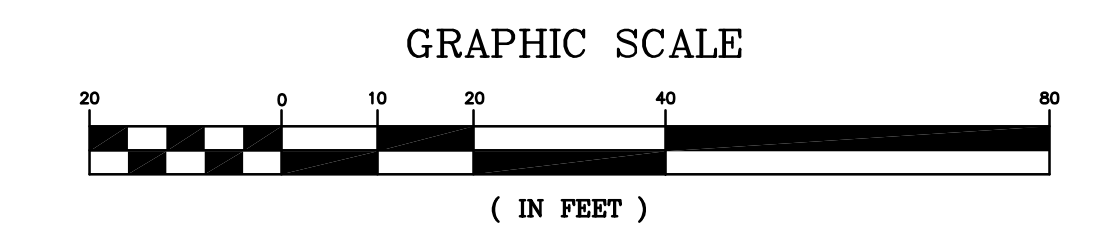
**GENERAL NOTES**  
 1. SEE SHEET 8 FOR ADDITIONAL INFORMATION AND NOTES.

**REFERENCE PLANS**  
 1. "EXISTING CONDITIONS PLAN" PREPARED FOR TOWN OF ALLENTOWN LOCATED AT ALLENTOWN ROAD, GRANITE STREET & CHESTER TURNPIKE; COUNTY OF MERRIMACK; ALLENTOWN, NH; PREPARED BY DAVID W. VINCENT, LLS LAND SURVEYING SERVICES; SHEET 1 OF 2 & SHEET 2 OF 2; DATED OCTOBER 8, 2014.

DIG-SAFE  
 1-888-344-7233



NOTE:  
 CONTRACTOR IS REQUIRED TO CALL DIGSAFE AND COORDINATE LOCATIONS OF EXISTING UTILITY SERVICES A MINIMUM OF 72 HOURS PRIOR TO STARTING ANY WORK ON SITE.



DATE: 10-7-14	SCALE: 1"=20'	DRAWN BY: SRD	DESIGN BY: SRD	PROJECT NO: 0928	FILE: SITE.DWG
NO.	REVISION	APP'D	DATE		
1	NH07 PRELIMINARY DESIGN COMMENTS	KMT	12/1/2014		
2	FINAL DESIGN REVIEW	KMT	1/26/2015		

**HAIGHT ENGINEERING, PLLC**  
 CIVIL ENGINEERS  
 P.O. BOX 1166, 681 WATSON ROAD  
 ALLENTOWN, NH 03815  
 603.750.4266 FAX 603.749.7948

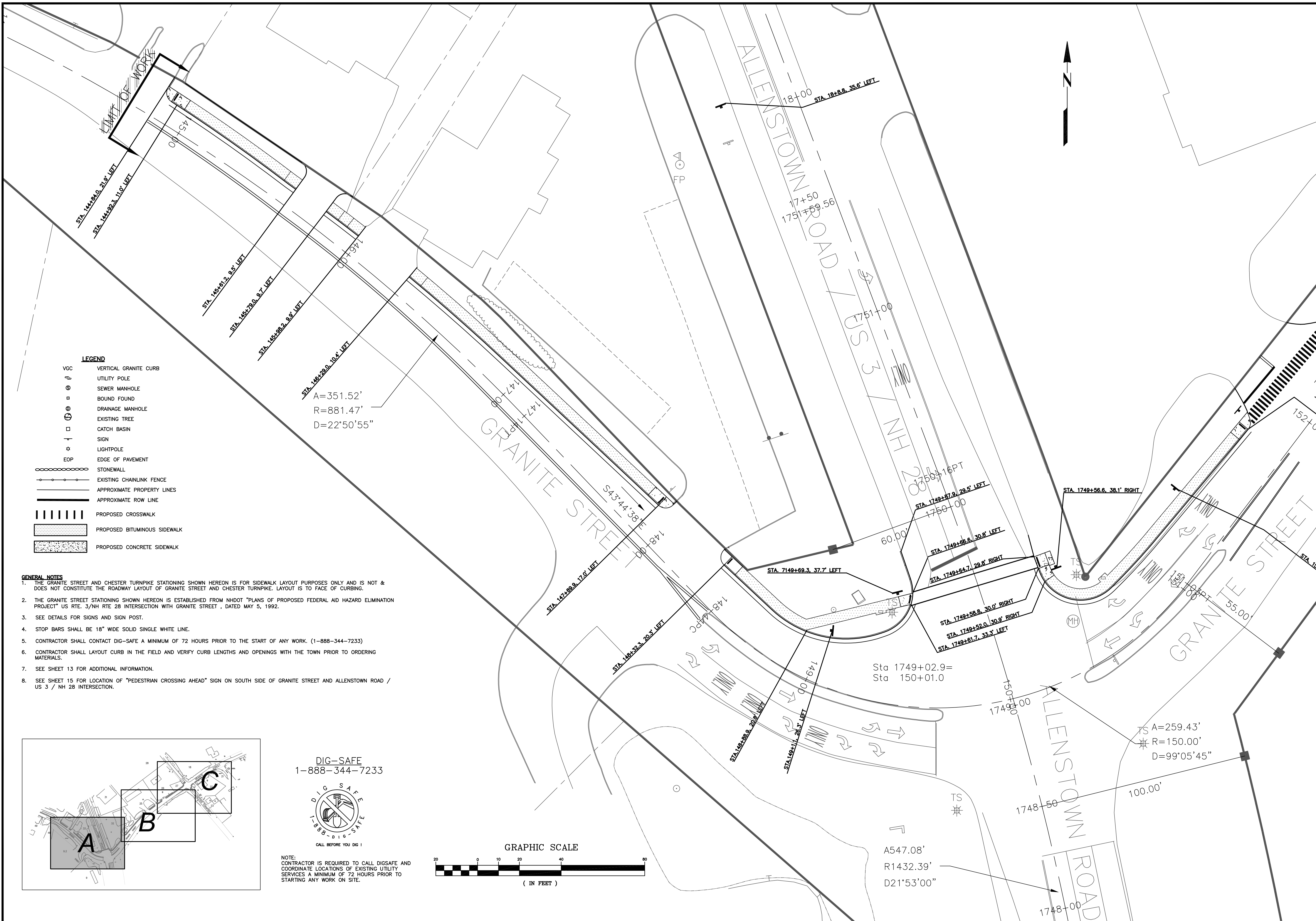
**TOWN OF ALLENTOWN**  
 16 SCHOOL STREET  
 ALLENTOWN, NH 03275

**SITE PLAN - C**

SRTS PROJECT #15891  
 FEDERAL PROJECT #X-4001(065)  
 GRANITE STREET SIDEWALK CONSTRUCTION  
 FROM RITE-AID TO PARKWOOD DRIVE  
 ALLENTOWN, NH 03275  
 MERRIMACK COUNTY

**9**



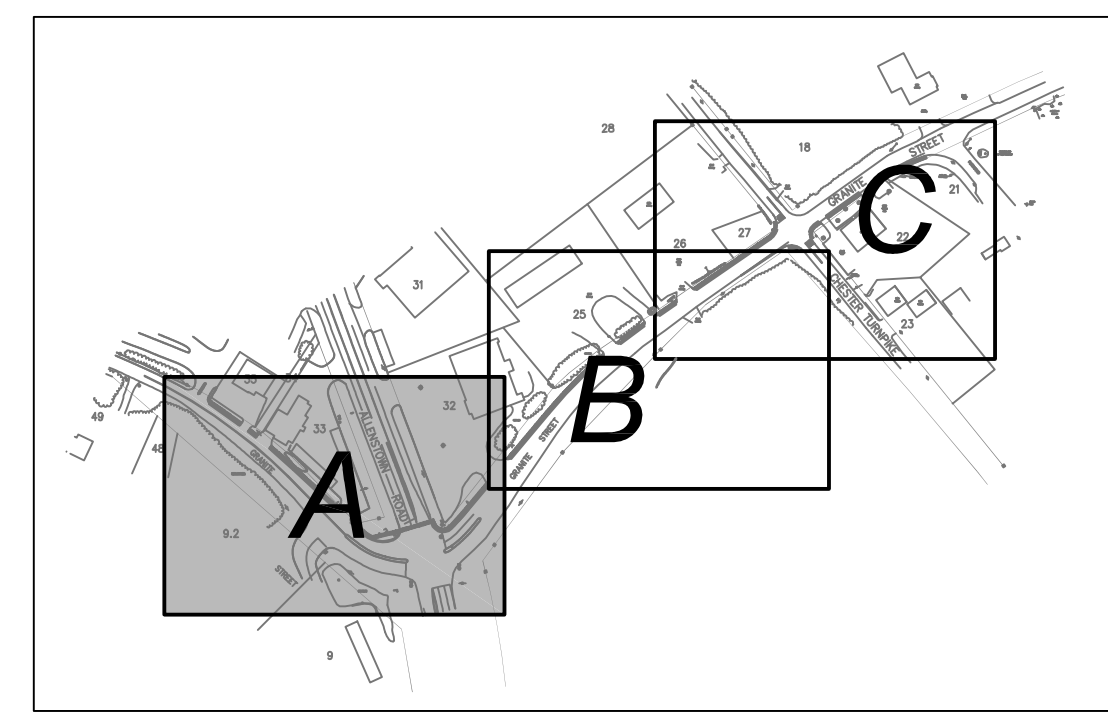


**LEGEND**

- VGC      VERTICAL GRANITE CURB
- ⊕      UTILITY POLE
- ⊙      SEWER MANHOLE
- ⊙      BOUND FOUND
- ⊙      DRAINAGE MANHOLE
- ⊙      EXISTING TREE
- ⊙      CATCH BASIN
- ⊙      SIGN
- ⊙      LIGHTPOLE
- ⊙      EOP
- ⊙      EDGE OF PAVEMENT
- ⊙      STONEWALL
- ⊙      EXISTING CHAINLINK FENCE
- ⊙      APPROXIMATE PROPERTY LINES
- ⊙      APPROXIMATE ROW LINE
- ⊙      PROPOSED CROSSWALK
- ⊙      PROPOSED BITUMINOUS SIDEWALK
- ⊙      PROPOSED CONCRETE SIDEWALK

**GENERAL NOTES**

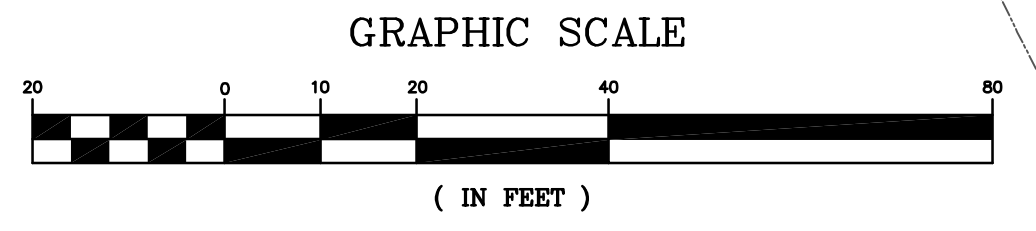
1. THE GRANITE STREET AND CHESTER TURNPIKE STATIONING SHOWN HEREON IS FOR SIDEWALK LAYOUT PURPOSES ONLY AND IS NOT & DOES NOT CONSTITUTE THE ROADWAY LAYOUT OF GRANITE STREET AND CHESTER TURNPIKE. LAYOUT IS TO FACE OF CURBING.
2. THE GRANITE STREET STATIONING SHOWN HEREON IS ESTABLISHED FROM NHDOT "PLANS OF PROPOSED FEDERAL AID HAZARD ELIMINATION PROJECT" US RTE. 3/NH RTE 28 INTERSECTION WITH GRANITE STREET, DATED MAY 5, 1992.
3. SEE DETAILS FOR SIGNS AND SIGN POST.
4. STOP BARS SHALL BE 18" WIDE SOLID SINGLE WHITE LINE.
5. CONTRACTOR SHALL CONTACT DIG-SAFE A MINIMUM OF 72 HOURS PRIOR TO THE START OF ANY WORK. (1-888-344-7233)
6. CONTRACTOR SHALL LAYOUT CURB IN THE FIELD AND VERIFY CURB LENGTHS AND OPENINGS WITH THE TOWN PRIOR TO ORDERING MATERIALS.
7. SEE SHEET 13 FOR ADDITIONAL INFORMATION.
8. SEE SHEET 15 FOR LOCATION OF "PEDESTRIAN CROSSING AHEAD" SIGN ON SOUTH SIDE OF GRANITE STREET AND ALLENTOWN ROAD / US 3 / NH 28 INTERSECTION.



DIG-SAFE  
1-888-344-7233



NOTE:  
CONTRACTOR IS REQUIRED TO CALL DIGSAFE AND COORDINATE LOCATIONS OF EXISTING UTILITY SERVICES A MINIMUM OF 72 HOURS PRIOR TO STARTING ANY WORK ON SITE.



<p><b>LAYOUT PLAN - A</b></p> <p>SRTS PROJECT #15891 FEDERAL PROJECT #X-4001(065) GRANITE STREET SIDEWALK CONSTRUCTION FROM RITE-AID TO PARKWOOD DRIVE ALLENTOWN, NH 03275 MERRIMACK COUNTY</p>	<p>TOWN OF ALLENTOWN 16 SCHOOL STREET ALLENTOWN, NH 03275</p>
<p>10</p>	

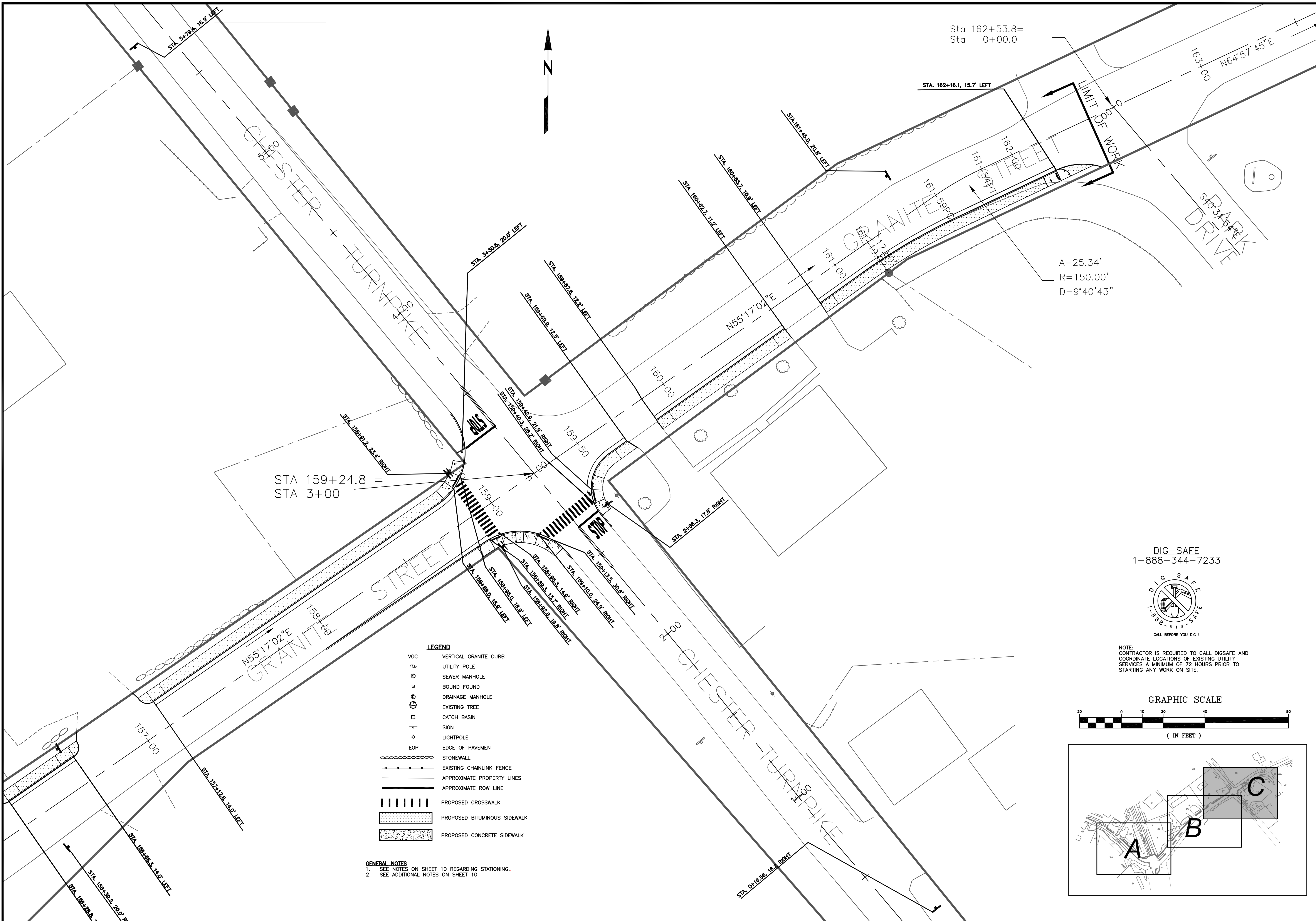
DATE	NO.	REVISION
10-7-14	1	FILE SITE DWG
12/26/2015	2	NHDOT PRELIMINARY DESIGN COMMENTS
12/11/2014	1	FINAL DESIGN REVIEW
1/26/2015	2	KMT
1/26/2015	1	APP'D

Haight Engineering, PLLC  
 CIVIL ENGINEERS  
 P.O. BOX 1166, 61 WATSON ROAD  
 ALLENTOWN, NH 03275  
 603.750.4266 FAX 603.749.7348









STA 159+24.8 =  
STA 3+00

Sta 162+53.8=  
Sta 0+00.0

A=25.34'  
R=150.00'  
D=9°40'43"

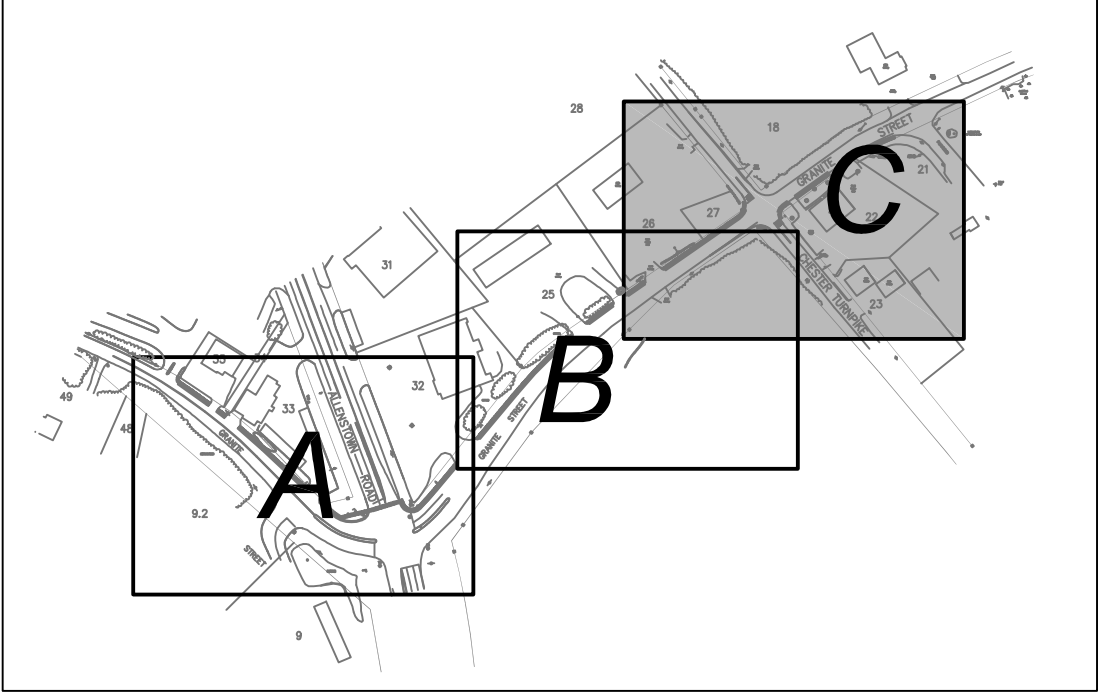
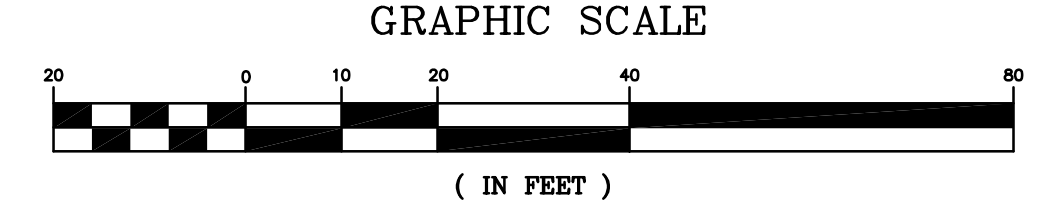
- LEGEND**
- VGC VERTICAL GRANITE CURB
  - UTILITY POLE
  - SEWER MANHOLE
  - BOUND FOUND
  - DRAINAGE MANHOLE
  - EXISTING TREE
  - CATCH BASIN
  - SIGN
  - LIGHTPOLE
  - EOP EDGE OF PAVEMENT
  - STONEWALL
  - EXISTING CHAINLINK FENCE
  - APPROXIMATE PROPERTY LINES
  - APPROXIMATE ROW LINE
  - PROPOSED CROSSWALK
  - PROPOSED BITUMINOUS SIDEWALK
  - PROPOSED CONCRETE SIDEWALK

**GENERAL NOTES**  
 1. SEE NOTES ON SHEET 10 REGARDING STATIONING.  
 2. SEE ADDITIONAL NOTES ON SHEET 10.

DIG-SAFE  
1-888-344-7233



NOTE:  
CONTRACTOR IS REQUIRED TO CALL DIGSAFE AND  
COORDINATE LOCATIONS OF EXISTING UTILITY  
SERVICES A MINIMUM OF 72 HOURS PRIOR TO  
STARTING ANY WORK ON SITE.



DATE: 10-7-14		NO.	REVISION
SCALE: 1"=20'		NO.	REVISION
DRAWN BY: SRD		NO.	REVISION
DESIGN BY: SRD		NO.	REVISION
APPROVED BY: SJH		NO.	REVISION
PROJECT NO: 0928		NO.	REVISION
FILE: SITE.DWG		NO.	REVISION
DATE: 12/1/2014		NO.	REVISION
APP'D: KMT		NO.	REVISION
DATE: 1/26/2015		NO.	REVISION
APP'D: KMT		NO.	REVISION
DATE: 12/1/2014		NO.	REVISION
APP'D: KMT		NO.	REVISION
DATE: 12/1/2014		NO.	REVISION
APP'D: KMT		NO.	REVISION

HAIGHT ENGINEERING, PLLC  
 CIVIL ENGINEERS  
 P.O. BOX 1166, 681 WATSON ROAD  
 HAMPSHIRE, NH 03828  
 603.750.4266 FAX 603.749.7348

**TOWN OF ALLENSTOWN**  
 16 SCHOOL STREET  
 ALLENSTOWN, NH 03275

**LAYOUT PLAN - C**

SRTS PROJECT #15891  
 FEDERAL PROJECT #X-4001(065)  
 GRANITE STREET SIDEWALK CONSTRUCTION  
 FROM RITE-AID TO PARKWOOD DRIVE  
 ALLENSTOWN, NH 03275  
 MERRIMACK COUNTY

12





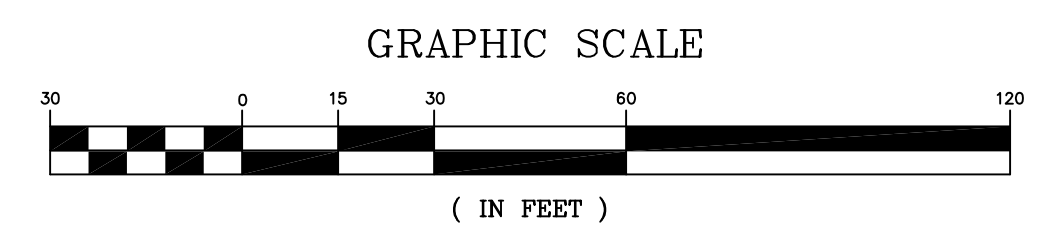
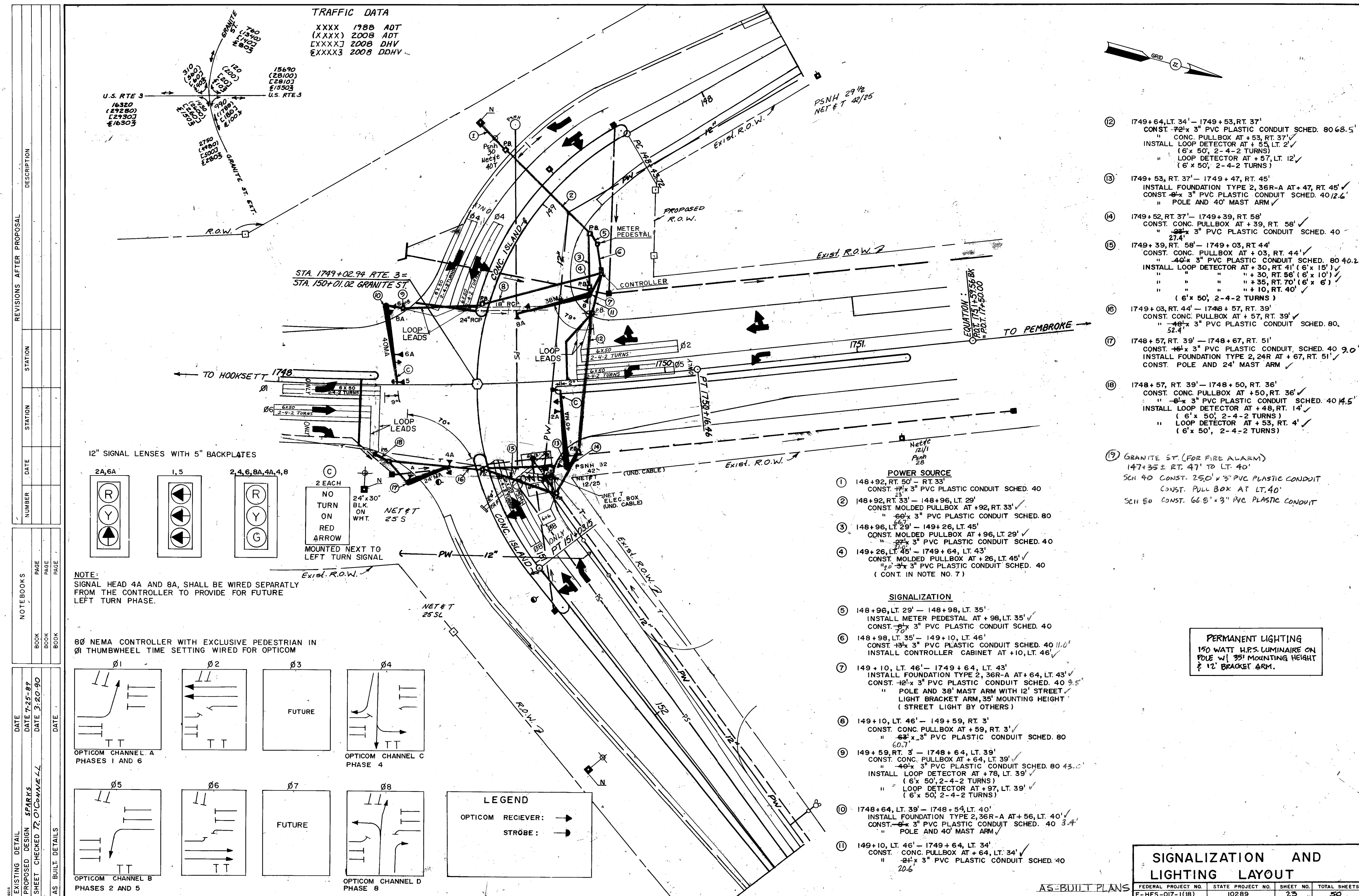






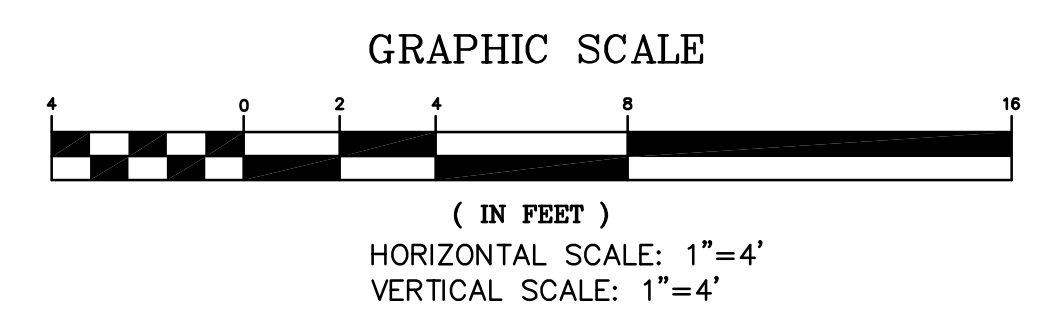
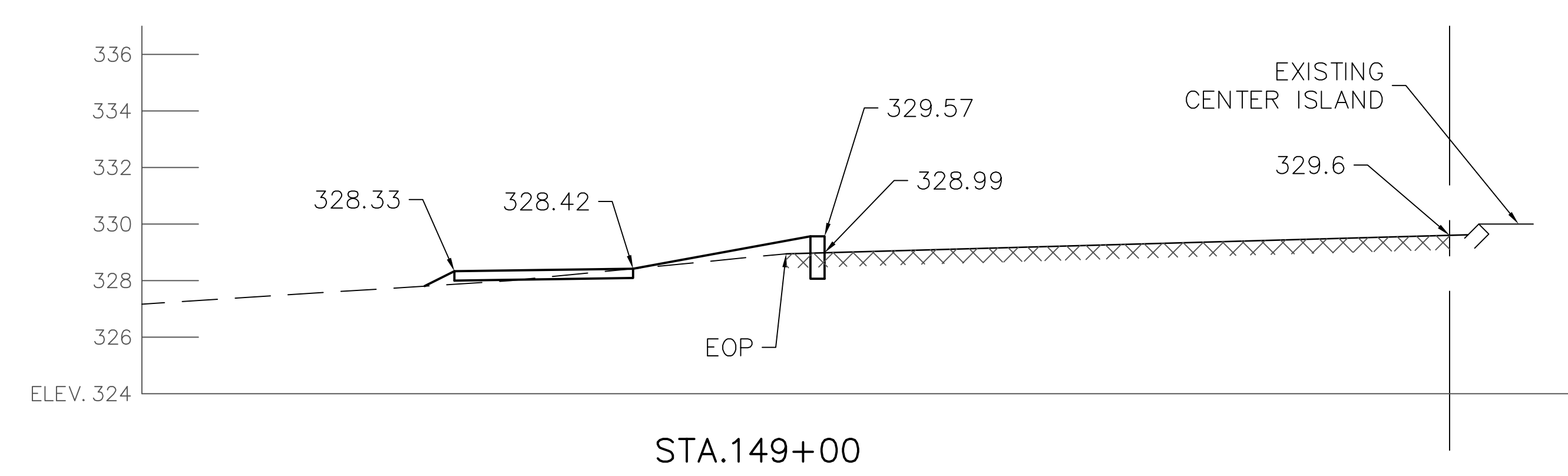
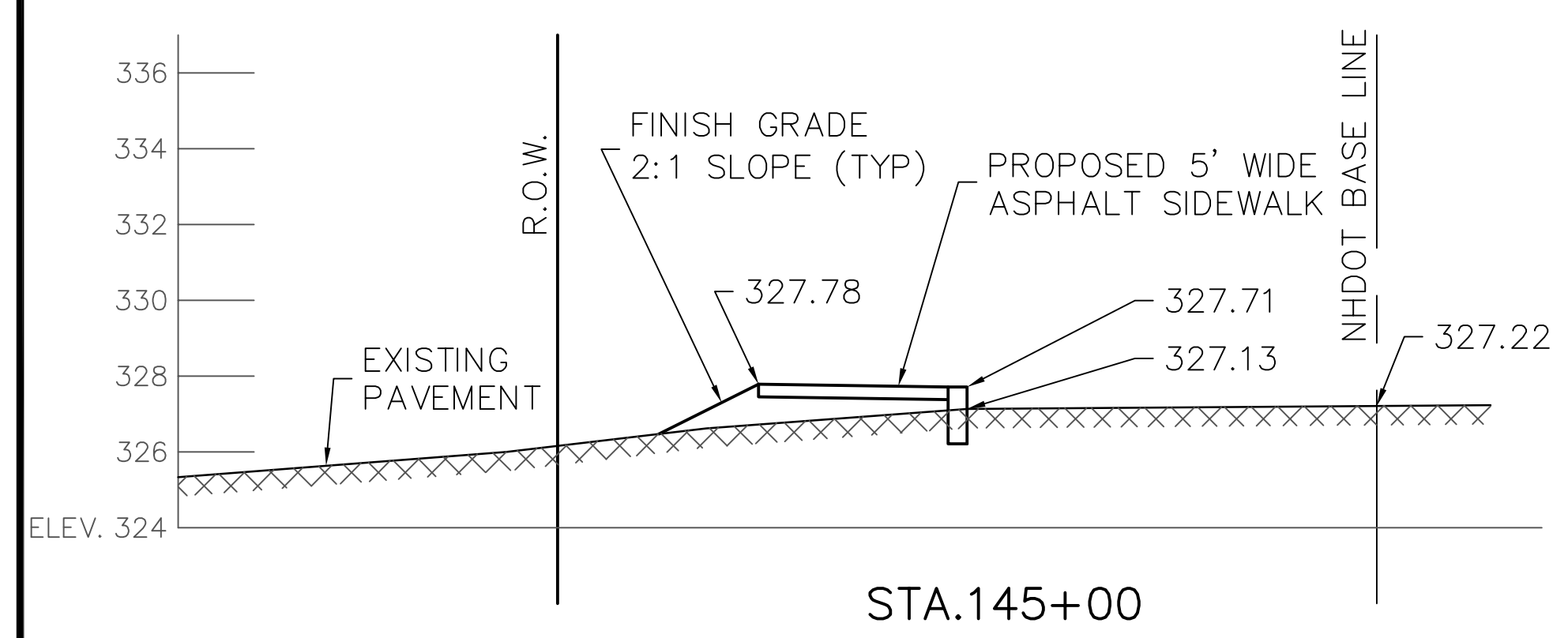
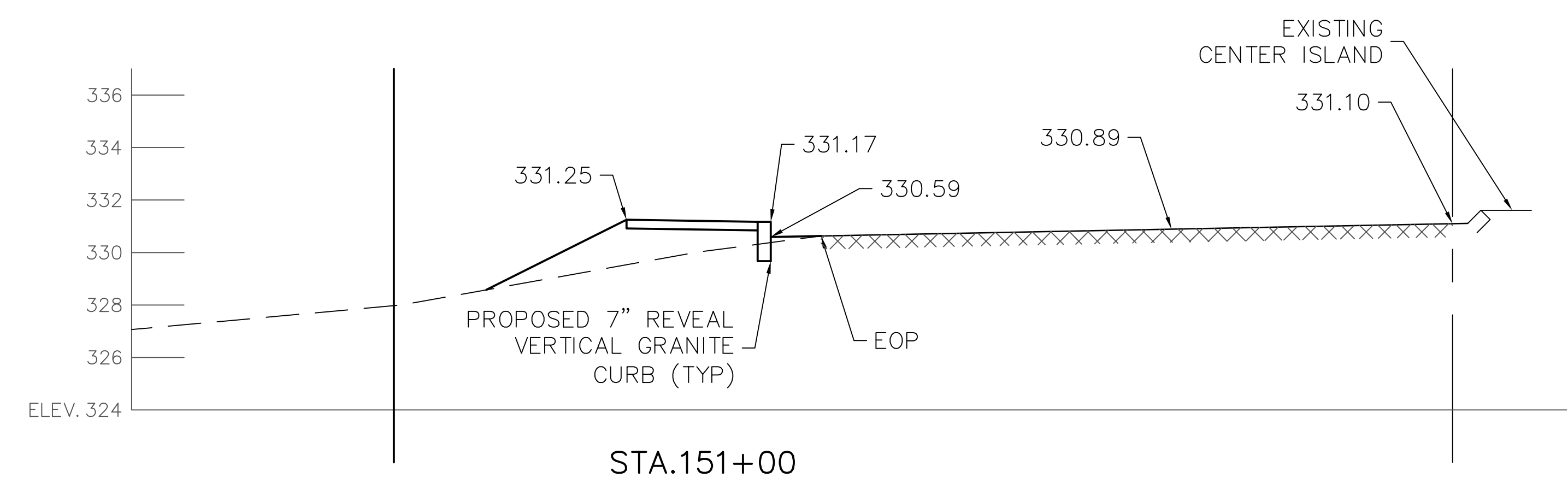
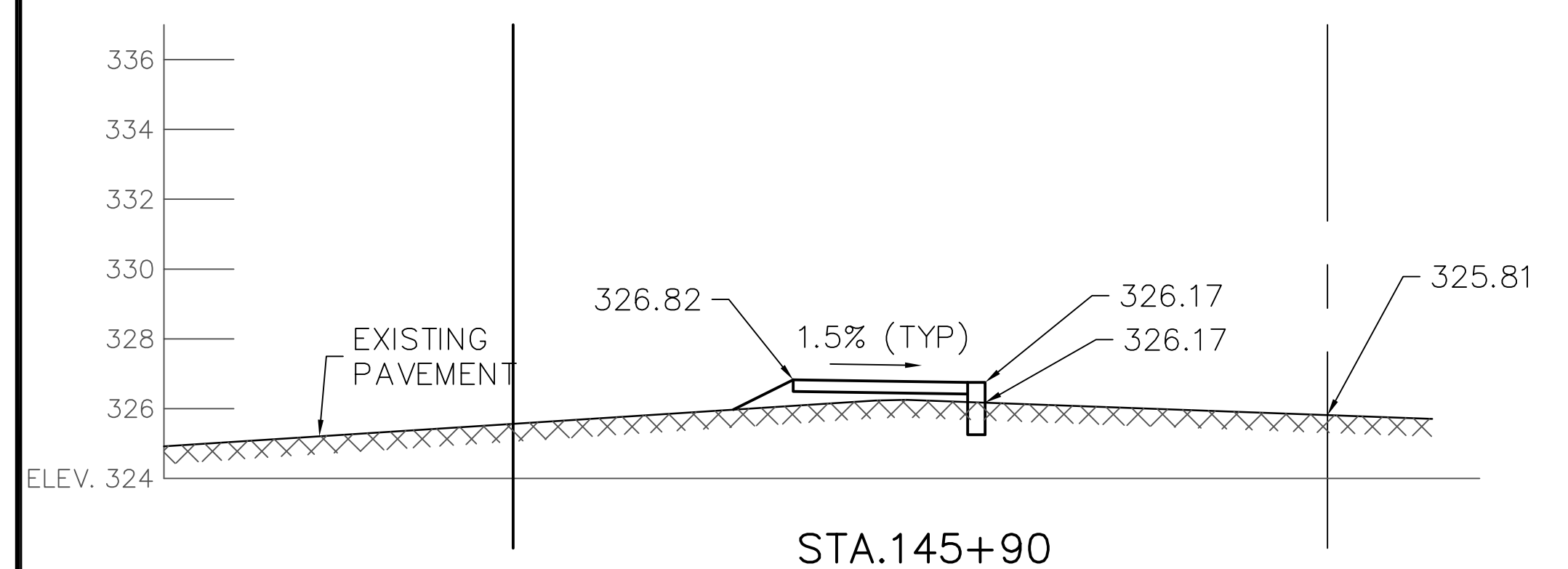
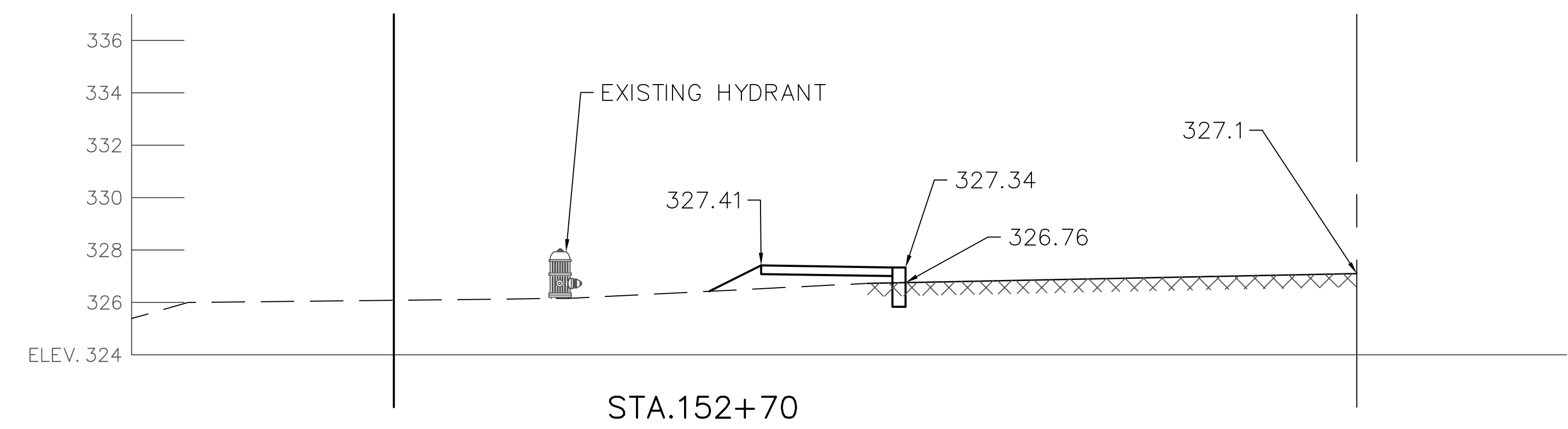
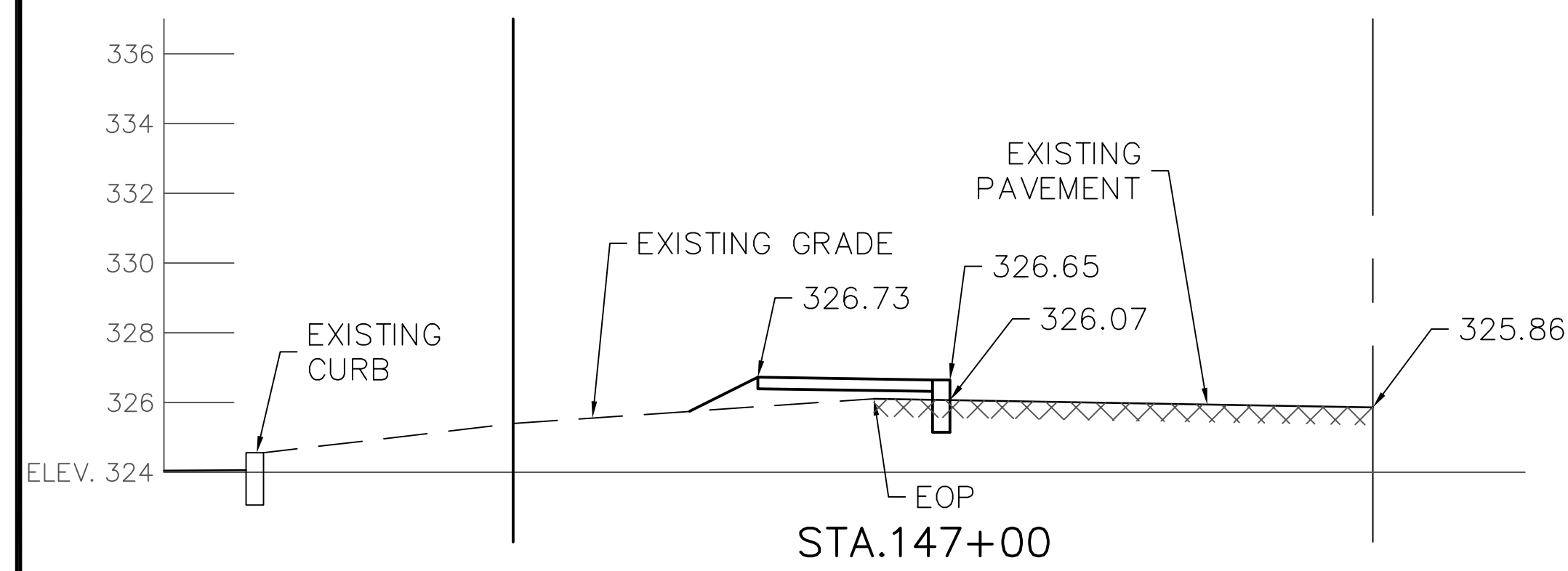
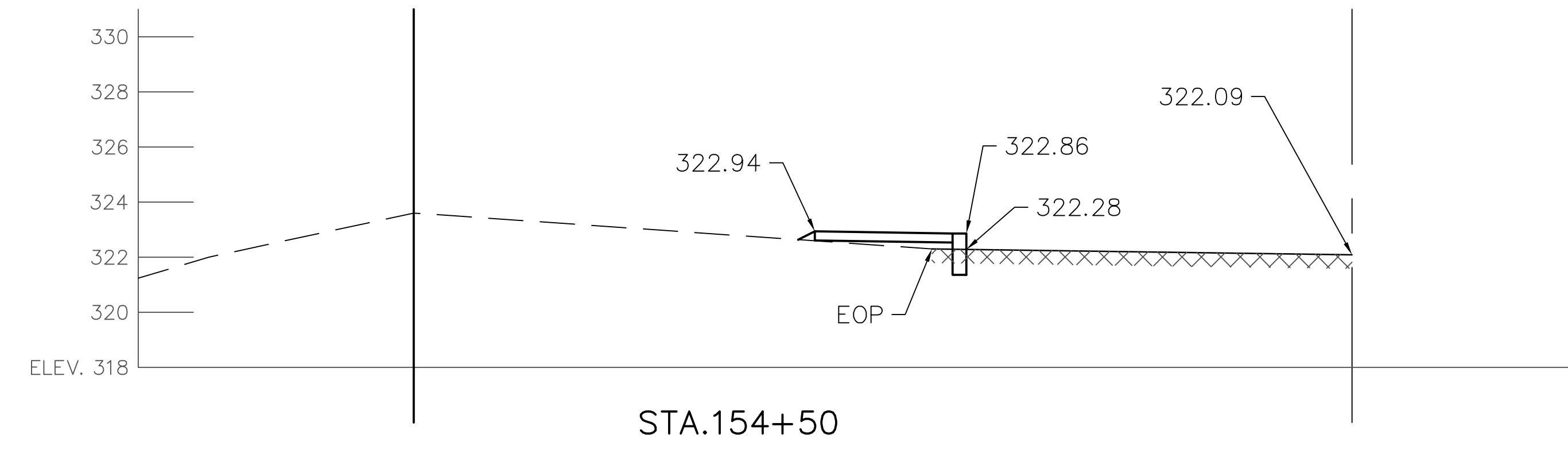
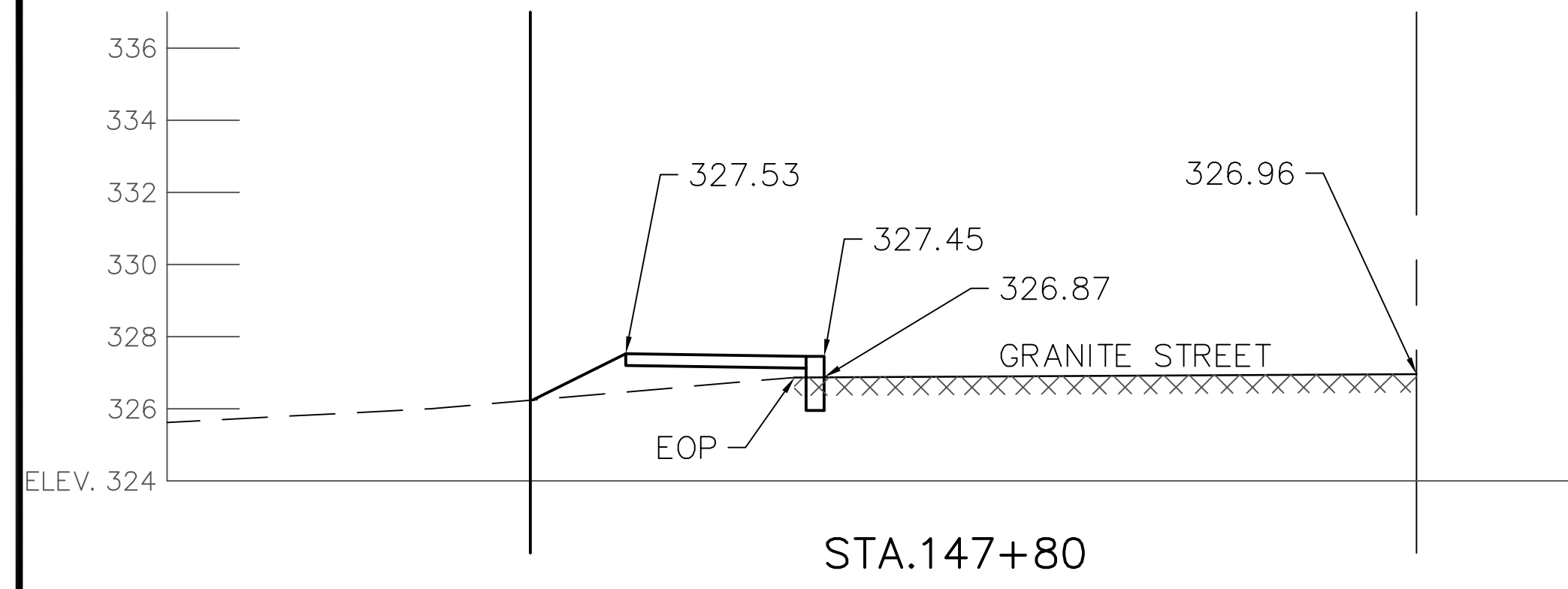






FOR INFORMATION PURPOSES ONLY.  
 FIELD VERIFY PRIOR TO CONSTRUCTION.





**LEGEND**

—	EOP	EDGE OF PAVEMENT
—	TYP	TYPICAL
—	R.O.W.	RIGHT OF WAY
---		EXISTING GRADE
XXXXXX		EXISTING PAVEMENT

**CROSS SECTIONS ALONG GRANITE STREET**

**TOWN OF ALLENSTOWN  
16 SCHOOL STREET  
ALLENSTOWN, NH 03275**

**SIDEWALK CONSTRUCTION PROJECT**

**XS-1**

DATE: 12-18-14	SCALE: AS SHOWN	DRAWN BY: SRD	DESIGN BY: SRD	APPROVED BY: SJH	PROJECT NO: 0905	FILE: SITE.DWG	NO.	2	REVISION	FINAL DESIGN REVIEW	APP'D	DATE	1/26/2015
----------------	-----------------	---------------	----------------	------------------	------------------	----------------	-----	---	----------	---------------------	-------	------	-----------

NH SRFS PROJECT FEDERAL PROJECT #

HAIGHT ENGINEERING, PLLC  
CIVIL ENGINEERS  
P.O. BOX 1166, 601 WATSON ROAD  
ALLENSTOWN, NH 03275  
603.750.4266 FAX 603.749.7948



